

Aggregate Income and Productivity Trends, Canada vs. United States

List of Tables

- Table 1: Aggregate Income Trends, Canada, 1961-2009
- Table 1A: Aggregate Income Trends, Annual Rate of Change, Canada, 1962-2009
- Table 2: Aggregate Income Trends, United States, 1961-2009
- Table 2A: Aggregate Income Trends, Annual Rate of Change, United States, 1962-2009
- Table 3: Relative Aggregate Income Trends in Canada and United States, 1961-2009
- Table 4: Productivity in the Total Economy, Canada, 1961-2009
- Table 4A: Productivity in the Total Economy, Annual Rate of Change, Canada, 1962-2009
- Table 5: Productivity in the Total Economy, United States, 1961-2009
- Table 5A: Productivity in the Total Economy, Annual Rate of Change, United States, 1962-2009
- Table 6: Annual Productivity in the Business Sector in Canada and the United States, 1946-2009, 2005=100
- Table 6A: Annual Productivity in the Business Sector in Canada and the United States, Annual Rate of Change, 1947-2009
- Table 6B: Productivity in the Business Sector in Canada and the United States by Quarter, 1987Q1-2010Q2, 2005Q1=100
- Table 6C: Productivity in the Business Sector in Canada and the United States by Quarter, Year-over-Year Rates of Change, 1988Q1-2010Q2
- Table 6D: Productivity in the Business Sector in Canada and the United States by Quarter, Quarter-to-Quarter Compound Annualized Growth Rates, 1987-2009
- Table 7: Relative Labour Productivity Trends in the Total Economy in Canada and United States, 1961-2009
- Table 7a: Relative Labour Productivity Trends in the Business Sector in Canada and United States, 1947-2009
- Table 8: Main Labour Market Variables, Canada, 1976-2009
- Table 8A: Main Labour Market Variables, Annual Rate of Change, Canada, 1977-2009
- Table 9: Main Labour Market Variables, United States, 1976-2009
- Table 9A: Main Labour Market Variables, Annual Rate of Change, United States, 1977-2009
- Table 10: GDP per Capita Decomposition into Productivity and Labour Market Components, Canada, 1976-2009
- Table 10A: GDP per Capita Decomposition into Productivity and Labour Market Components, Annual Rate of Change, Canada, 1977-2009
- Table 11: GDP per Capita Decomposition into Productivity and Labour Market Components, United States, 1976-2009
- Table 11A: GDP per Capita Decomposition into Productivity and Labour Market Components, Annual Rate of Change, United States, 1977-2009

List of Charts

- Chart 1: Relative Aggregate Income Trends in Canada, 1961-2009 (Canada as % of the United States)
- Chart 1a: Relative Aggregate Income Trends in Canada, 1989-2009 (Canada as % of the United States)
- Chart 2: Personal Disposable Income as Share of Personal Income in Canada and the United States, 1961-2009
- Chart 3: Relative Labour Productivity Levels in the Total Economy in Canada, 1961-2009 (Canada as % of the United States)
- Chart 3a: Relative Labour Productivity Levels in the Business Sector in Canada, 1947-2009 (Canada as % of the United States)
- Chart 4: Working Age Population in Canada and the United States, 1989-2009
- Chart 5: Labour Force in Canada and the United States, 1989-2009
- Chart 6: Employment in Canada and the United States, 1989-2009
- Chart 7: Unemployment in Canada and the United States, 1989-2009
- Chart 7a: Canada-United States Unemployment Rate Gaps, 1976-2009
- Chart 8: Real GDP in Canada and the United States, 1989-2009
- Chart 9: Labour Productivity (Real GDP per worker) in Canada and the United States, 1989-2009
- Chart 10: Output per Hour in the Business Sector, Canada and the United States, 1989-2009
- Chart 11: Labour Force Participation Rate in Canada and the United States, 1976-2009
- Chart 12: Employment to Working Age Population Ratio in Canada and the United States, 1976-2009

Table 1: Aggregate Income Trends in Canada, 1961-2009

Year	Population, annual average of mid-quarter estimates	Nominal GDP at market prices, millions of current \$	Personal Income, millions of current \$	Personal Disposable Income, millions of current \$	CPI, 2002=100	GDP deflator, 2002=100	GDP, million 2002\$	PI, million 2002\$	PDI, million 2002\$	GDP per capita, current \$	PI per capita, current \$	PDI per capita, current \$	GDP per capita, 2002 CAD\$	PI per capita, 2002 CAD\$	PDI per capita, 2002 CAD\$
	A	B	C	D	E	F=B/G*100	G	H=C/E*100	I=D/E*100	J=B/A*1,000.00	K=C/A*1,000.000	L=D/A*1,000.000	M=G/A*1,000.00	N=H/A*1,000.000	O=I/A*1,000.000
1961	18,224,500	41,173	30,572	27,580	15.7	15.6	264,475	194,726	175,669	2,259	1,678	1,513	14,512	10,685	9,639
1962	18,570,750	44,665	33,238	30,003	15.9	15.8	282,972	209,044	188,698	2,405	1,790	1,616	15,238	11,257	10,161
1963	18,919,000	47,961	35,476	32,024	16.1	16.1	297,989	220,348	198,907	2,535	1,875	1,693	15,751	11,647	10,514
1964	19,277,250	52,549	38,146	34,144	16.4	16.6	317,283	232,598	208,195	2,726	1,979	1,771	16,459	12,066	10,800
1965	19,633,500	57,930	41,904	37,370	16.8	17.2	337,487	249,429	222,440	2,951	2,134	1,903	17,189	12,704	11,330
1966	19,997,500	64,818	47,098	41,214	17.5	18.0	359,913	269,131	235,509	3,241	2,355	2,061	17,998	13,458	11,777
1967	20,363,750	69,698	51,409	44,326	18.1	18.8	370,406	284,028	244,895	3,423	2,525	2,177	18,189	13,948	12,026
1968	20,692,000	76,131	56,253	47,847	18.8	19.6	388,481	299,218	254,505	3,679	2,719	2,312	18,774	14,461	12,300
1969	20,994,250	83,825	62,650	52,238	19.7	20.5	408,033	318,020	265,168	3,993	2,984	2,488	19,435	15,148	12,630
1970	21,287,500	90,179	67,932	55,854	20.3	21.5	420,398	334,640	275,143	4,236	3,191	2,624	19,749	15,720	12,925
1971	21,747,319	98,429	74,650	61,075	20.9	22.5	437,709	357,177	292,225	4,526	3,433	2,808	20,127	16,424	13,437
1972	22,187,095	109,913	84,533	69,517	21.9	23.8	461,546	385,995	317,429	4,954	3,810	3,133	20,802	17,397	14,307
1973	22,453,742	128,956	98,699	81,194	23.6	26.1	493,689	418,216	344,042	5,743	4,396	3,616	21,987	18,626	15,322
1974	22,772,043	154,038	118,139	96,465	26.2	30.1	511,911	450,912	368,187	6,764	5,188	4,236	22,480	19,801	16,168
1975	23,103,010	173,621	137,240	112,712	29.0	33.3	521,243	473,241	388,662	7,515	5,940	4,879	22,562	20,484	16,823
1976	23,414,354	199,994	156,705	127,791	31.1	36.5	548,344	503,875	410,904	8,542	6,693	5,458	23,419	21,520	17,549
1977	23,693,935	220,973	173,675	141,695	33.6	39.0	567,307	516,890	421,711	9,326	7,330	5,980	23,943	21,815	17,798
1978	23,935,460	244,877	193,924	160,122	36.6	41.5	589,736	529,847	437,492	10,231	8,102	6,690	24,639	22,136	18,278
1979	24,170,164	279,577	218,323	180,727	40.0	45.7	612,175	545,808	451,818	11,567	9,033	7,477	25,328	22,582	18,693
1980	24,470,715	314,390	248,672	205,618	44.0	50.3	625,414	565,164	467,314	12,848	10,162	8,403	25,558	23,096	19,097
1981	24,784,554	360,471	290,789	238,606	49.5	55.7	647,323	587,453	482,032	14,544	11,733	9,627	26,118	23,702	19,449
1982	25,082,945	379,859	321,752	263,452	54.9	60.4	628,816	586,069	479,876	15,144	12,828	10,503	25,069	23,365	19,132
1983	25,335,951	411,386	339,013	275,529	58.1	63.7	645,906	583,499	474,232	16,237	13,381	10,875	25,494	23,030	18,718
1984	25,576,735	449,582	367,333	299,169	60.6	65.8	683,462	606,160	493,678	17,578	14,362	11,697	26,722	23,700	19,302
1985	25,813,200	485,714	397,858	322,989	63.0	67.8	716,132	631,521	512,681	18,816	15,413	12,513	27,743	24,465	19,861
1986	26,067,487	512,541	425,757	340,403	65.6	69.9	733,468	649,020	518,907	19,662	16,333	13,059	28,137	24,898	19,906
1987	26,397,870	558,949	457,702	362,185	68.5	73.1	764,664	668,178	528,737	21,174	17,339	13,720	28,967	25,312	20,030
1988	26,751,474	613,094	502,542	395,217	71.2	76.4	802,702	705,817	555,080	22,918	18,786	14,774	30,006	26,384	20,750
1989	27,214,902	657,728	546,324	432,772	74.8	79.8	823,728	730,380	578,572	24,168	20,074	15,902	30,268	26,837	21,259
1990	27,632,360	679,921	586,566	457,400	78.4	82.4	825,318	748,171	583,418	24,606	21,228	16,553	29,868	27,076	21,114
1991	27,987,111	685,367	605,322	472,509	82.8	84.8	808,051	731,065	570,663	24,489	21,629	16,883	28,872	26,121	20,390
1992	28,324,154	700,480	620,653	483,370	84.0	85.9	815,123	738,873	575,440	24,731	21,912	17,066	28,778	26,086	20,316
1993	28,651,462	727,184	633,059	494,944	85.6	87.2	834,185	739,555	578,206	25,380	22,095	17,275	29,115	25,812	20,181
1994	28,960,064	770,873	646,348	501,678	85.7	88.2	874,261	754,198	585,389	26,618	22,319	17,323	30,189	26,043	20,214
1995	29,263,007	810,426	672,111	519,588	87.6	90.2	898,814	767,250	593,137	27,695	22,968	17,756	30,715	26,219	20,269
1996	29,569,875	836,864	687,203	527,783	88.9	91.6	913,364	773,007	593,682	28,301	23,240	17,849	30,888	26,142	20,077
1997	29,867,572	882,733	715,495	546,166	90.4	92.7	951,962	791,477	604,166	29,555	23,956	18,286	31,873	26,500	20,228
1998	30,123,875	914,973	748,321	568,766	91.3	92.3	990,968	819,629	622,964	30,374	24,841	18,881	32,896	27,209	20,680
1999	30,367,051	982,441	783,060	596,227	92.9	93.9	1,045,786	842,906	641,794	32,352	25,787	19,634	34,438	27,757	21,135
2000	30,647,400	1,076,577	840,382	639,567	95.4	97.8	1,100,515	880,904	670,406	35,128	27,421	20,869	35,909	28,743	21,875
2001	30,970,939	1,108,048	876,471	669,196	97.8	98.9	1,120,146	896,187	684,249	35,777	28,300	21,607	36,168	28,936	22,093
2002	31,306,199	1,152,905	898,843	694,010	100.0	100.0	1,152,905	898,843	694,010	36,827	28,711	22,168	36,827	28,711	22,168
2003	31,599,552	1,213,175	931,773	720,855	102.8	103.3	1,174,592	906,394	701,221	38,392	29,487	22,812	37,171	28,684	22,191
2004	31,900,398	1,290,906	984,164	760,462	104.7	106.6	1,211,239	939,985	726,325	40,467	30,851	23,839	37,969	29,466	22,769
2005	32,204,674	1,373,845	1,035,586	794,269	107.0	110.1	1,247,807	967,837	742,307	42,660	32,156	24,663	38,746	30,053	23,050
2006	32,532,947	1,450,405	1,106,832	853,190	109.1	113.0	1,283,033	1,014,511	782,026	44,583	34,022	26,225	39,438	31,184	24,038
2007	32,882,942	1,529,589	1,174,683	901,634	111.5	116.7	1,311,260	1,053,527	808,640	46,516	35,723	27,420	39,877	32,039	24,591
2008	33,263,066	1,599,608	1,224,653	949,484	114.1	121.4	1,318,055	1,073,316	832,151	48,090	36,817	28,545	39,625	32,267	25,017
2009	33,668,567	1,527,258	1,228,407	965,628	114.4	118.8	1,285,604	1,073,782	844,080	45,362	36,485	28,680	38,184	31,893	25,070
Average annual rates of growth, %															
61-73	1.75	9.98	10.26	9.42	3.45	4.41	5.34	6.58	5.76	8.09	8.36	7.53	3.52	4.74	3.94
73-81	1.24	13.71	14.46	14.42	9.70	9.92	3.44	4.34	4.31	12.32	13.06	13.02	2.18	3.06	3.03
81-89	1.18	7.81	8.20	7.73	5.30	4.61	3.06	2.76	2.31	6.55	6.94	6.47	1.86	1.56	1.12
89-00	1.09	4.58	3.99	3.61	2.24	1.86	2.67	1.72	1.35	3.46	2.88	2.50	1.57	0.63	0.26
89-96	1.19	3.50	3.33	2.88	2.50	1.98	1.49	0.81	0.37	2.28	2.11	1.66	0.29	-0.37	-0.81
96-08	0.99	5.55	4.93	5.02	2.10	2.37	3.10	2.77	2.85	4.52	3.91	3.99	2.10	1.77	1.85
89-08	1.06	4.79	4.34	4.22	2.25	2.23	2.50	2.05	1.93	3.69	3.24	3.13	1.43	0.97	0.86
96-00	0.90	6.50	5.16	4.92	1.78	1.65	4.77	3.32	3.09	5.55	4.22	3.99	3.84	2.40	2.17
00-08	1.03	5.07	4.82	5.06	2.26	2.73	2.28	2.50	2.74	4.00	3.75	3.99	1.24	1.46	1.69
89-09	1.07	4.30	4.13	4.09	2.15	2.01	2.25	1.95	1.91	3.20	3.03	2.99	1.17	0.87	0.83
96-09	1.00	4.74	4.57	4.76	1.96	2.02	2.66	2.56	2.74	3.70	3.53	3.72	1.64	1.54	1.72
00-09	1.05	3.96	4.31	4.68	2.04	2.18	1.74	2.22	2.59	2.88	3.22	3.60	0.68	1.16	1.53

Source: Statistics Canada: [A], CANSIMIII v1, [B]: CANSIMIII v646937; [C] v647016; [D] v647037; [E] v41693271; [F] v3860085. Current as of October 4, 2010.

Note: Real GDP is expressed in 2002 chained dollars, PI and PDI are deflated using the CPI.

Table 1A: Aggregate Income Trends in Canada- Annual % Change, 1962-2009

Year	Population, annual average of mid-quarter estimates, annual % change	GDP, million 2002\$ annual % change	PI, million 2002\$ annual % change	PDI, million 2002\$ annual % change	CPI, 2002=100 annual % change	GDP defl, 2002=100 annual % change	GDP per capita annual % change	PI per capita annual % change	PDI per capita annual % change
	A	B	C	D	E	F	G	H	I
1961									
1962	1.90	6.99	7.35	7.42	1.27	1.39	5.00	5.35	5.41
1963	1.88	5.31	5.41	5.41	1.26	1.97	3.37	3.47	3.47
1964	1.89	6.47	5.56	4.67	1.86	2.90	4.50	3.60	2.72
1965	1.85	6.37	7.24	6.84	2.44	3.64	4.44	5.29	4.90
1966	1.85	6.64	7.90	5.87	4.17	4.92	4.70	5.94	3.95
1967	1.83	2.92	5.53	3.99	3.43	4.48	1.06	3.64	2.12
1968	1.61	4.88	5.35	3.92	3.87	4.15	3.22	3.68	2.28
1969	1.46	5.03	6.28	4.19	4.79	4.83	3.52	4.75	2.69
1970	1.40	3.03	5.23	3.76	3.05	4.42	1.61	3.78	2.33
1971	2.16	4.12	6.73	6.21	2.96	4.83	1.92	4.48	3.96
1972	2.02	5.45	8.07	8.62	4.78	5.90	3.36	5.93	6.47
1973	1.20	6.96	8.35	8.38	7.76	9.69	5.69	7.06	7.10
1974	1.42	3.69	7.82	7.02	11.02	15.20	2.24	6.31	5.52
1975	1.45	1.82	4.95	5.56	10.69	10.70	0.36	3.45	4.05
1976	1.35	5.20	6.47	5.72	7.24	9.50	3.80	5.06	4.32
1977	1.19	3.46	2.58	2.63	8.04	6.80	2.24	1.37	1.42
1978	1.02	3.95	2.51	3.74	8.93	6.60	2.90	1.47	2.70
1979	0.98	3.80	3.01	3.27	9.29	9.99	2.80	2.01	2.27
1980	1.24	2.16	3.55	3.43	10.00	10.07	0.91	2.27	2.16
1981	1.28	3.50	3.94	3.15	12.50	10.78	2.19	2.63	1.84
1982	1.20	-2.86	-0.24	-0.45	10.91	8.48	-4.01	-1.42	-1.63
1983	1.01	2.72	-0.44	-1.18	5.83	5.43	1.69	-1.43	-2.16
1984	0.95	5.81	3.88	4.10	4.30	3.28	4.82	2.91	3.12
1985	0.92	4.78	4.18	3.85	3.96	3.11	3.82	3.23	2.90
1986	0.99	2.42	2.77	1.21	4.13	3.03	1.42	1.77	0.23
1987	1.27	4.25	2.95	1.89	4.42	4.61	2.95	1.66	0.62
1988	1.34	4.97	5.63	4.98	3.94	4.49	3.59	4.24	3.59
1989	1.73	2.62	3.48	4.23	5.06	4.54	0.87	1.72	2.46
1990	1.53	0.19	2.44	0.84	4.81	3.18	-1.32	0.89	-0.69
1991	1.28	-2.09	-2.29	-2.19	5.61	2.95	-3.33	-3.52	-3.43
1992	1.20	0.88	1.07	0.84	1.45	1.32	-0.33	-0.13	-0.36
1993	1.16	2.34	0.09	0.48	1.90	1.44	1.17	-1.05	-0.67
1994	1.08	4.80	1.98	1.24	0.12	1.15	3.69	0.89	0.16
1995	1.05	2.81	1.73	1.32	2.22	2.26	1.74	0.68	0.27
1996	1.05	1.62	0.75	0.09	1.48	1.62	0.56	-0.30	-0.95
1997	1.01	4.23	2.39	1.77	1.69	1.20	3.19	1.37	0.75
1998	0.86	4.10	3.56	3.11	1.00	-0.43	3.21	2.68	2.23
1999	0.81	5.53	2.84	3.02	1.75	1.75	4.69	2.02	2.20
2000	0.92	5.23	4.51	4.46	2.69	4.13	4.27	3.55	3.50
2001	1.06	1.78	1.73	2.06	2.52	1.12	0.72	0.67	1.00
2002	1.08	2.92	0.30	1.43	2.25	1.09	1.82	-0.78	0.34
2003	0.94	1.88	0.84	1.04	2.80	3.28	0.94	-0.10	0.10
2004	0.95	3.12	3.71	3.58	1.85	3.19	2.15	2.73	2.60
2005	0.95	3.02	2.96	2.20	2.20	3.31	2.05	1.99	1.23
2006	1.02	2.82	4.82	5.35	1.96	2.67	1.79	3.76	4.29
2007	1.08	2.20	3.85	3.40	2.20	3.19	1.11	2.74	2.30
2008	1.16	0.52	1.88	2.91	2.33	4.04	-0.63	0.71	1.73
2009	1.22	-2.46	0.04	1.43	0.26	-2.11	-3.64	-1.16	0.21

Source: Table 1.

Table 2: Aggregate Income Trends in the United States, 1961-2009

Year	Population, annual average of mid-quarter estimates, thousands	Nominal GDP at market prices, billions current \$	Personal Income, billions current \$	Personal Disposable Income, billions current \$	CPI, 2005=100	GDP defl, 2005=100	GDP, billions 2005\$	PI, billion 2005\$	PDI, billion 2005\$	GDP per capita, 2005\$	PI per capita, 2005\$	PDI per capita, 2005\$
	A	B	C	D	E	F = B / G * 100	G	H = C / E *	I = D / E *	J = G / A *	K = I / A *	L = I / A *
								100	100	1,000,000	1,000,000	1,000,000
1961	183,742	545	429	382	15.3	18.8	2,896.9	2,801	2,493	15,766	15,243	13,565
1962	186,590	586	456	405	15.5	19.1	3,072.4	2,951	2,618	16,466	15,818	14,033
1963	189,300	618	480	425	15.7	19.3	3,206.7	3,060	2,713	16,940	16,167	14,329
1964	191,927	664	514	462	15.9	19.6	3,392.3	3,240	2,912	17,675	16,882	15,175
1965	194,347	719	556	498	16.1	19.9	3,610.1	3,444	3,086	18,576	17,721	15,881
1966	196,599	788	604	537	16.6	20.5	3,845.3	3,640	3,239	19,559	18,513	16,477
1967	198,752	832	648	575	17.1	21.1	3,942.5	3,790	3,363	19,836	19,067	16,920
1968	200,745	910	712	625	17.8	22.0	4,133.4	3,994	3,506	20,590	19,896	17,464
1969	202,736	984	778	674	18.8	23.1	4,261.8	4,142	3,586	21,021	20,429	17,686
1970	205,089	1,038	839	736	19.9	24.3	4,269.9	4,221	3,702	20,820	20,582	18,051
1971	207,692	1,127	903	801	20.7	25.5	4,413.3	4,355	3,865	21,249	20,968	18,607
1972	209,924	1,238	993	869	21.4	26.6	4,647.7	4,638	4,060	22,140	22,092	19,341
1973	211,939	1,382	1,111	978	22.7	28.1	4,917.0	4,885	4,302	23,200	23,048	20,300
1974	213,898	1,500	1,223	1,072	25.2	30.7	4,889.9	4,844	4,245	22,861	22,645	19,848
1975	215,981	1,638	1,335	1,187	27.5	33.6	4,879.5	4,846	4,310	22,592	22,436	19,956
1976	218,086	1,825	1,475	1,302	29.1	35.5	5,141.3	5,062	4,470	23,575	23,210	20,496
1977	220,289	2,030	1,633	1,435	31.0	37.8	5,377.7	5,261	4,625	24,412	23,883	20,994
1978	222,629	2,294	1,837	1,607	33.4	40.4	5,677.6	5,502	4,815	25,503	24,712	21,626
1979	225,106	2,562	2,060	1,791	37.2	43.8	5,855.0	5,540	4,818	26,010	24,612	21,402
1980	227,726	2,788	2,302	2,003	42.2	47.7	5,839.0	5,455	4,747	25,640	23,954	20,844
1981	230,008	3,127	2,582	2,237	46.5	52.2	5,987.2	5,548	4,806	26,030	24,121	20,897
1982	232,218	3,253	2,767	2,413	49.4	55.4	5,870.9	5,600	4,883	25,282	24,113	21,027
1983	234,333	3,535	2,952	2,600	51.0	57.6	6,136.2	5,789	5,098	26,186	24,703	21,755
1984	236,394	3,931	3,269	2,892	53.2	59.8	6,577.1	6,145	5,435	27,823	25,993	22,992
1985	238,506	4,218	3,497	3,079	55.1	61.6	6,849.3	6,347	5,589	28,718	26,610	23,434
1986	240,683	4,460	3,696	3,259	56.1	62.9	7,086.5	6,586	5,807	29,443	27,364	24,127
1987	242,843	4,736	3,924	3,435	58.2	64.8	7,313.3	6,747	5,906	30,115	27,783	24,320
1988	245,061	5,100	4,231	3,726	60.6	67.0	7,613.9	6,985	6,152	31,069	28,504	25,103
1989	247,387	5,482	4,558	3,991	63.5	69.5	7,885.9	7,178	6,286	31,877	29,016	25,411
1990	250,181	5,801	4,847	4,254	66.9	72.2	8,033.9	7,242	6,357	32,112	28,948	25,408
1991	253,530	5,992	5,032	4,445	69.7	74.8	8,015.1	7,215	6,374	31,614	28,457	25,140
1992	256,922	6,342	5,347	4,737	71.8	76.5	8,287.1	7,444	6,594	32,255	28,972	25,664
1993	260,282	6,667	5,568	4,922	74.0	78.2	8,523.4	7,526	6,652	32,747	28,913	25,556
1994	263,455	7,085	5,875	5,184	75.9	79.9	8,870.7	7,742	6,832	33,671	29,386	25,932
1995	266,588	7,415	6,201	5,457	78.0	81.5	9,093.7	7,946	6,993	34,111	29,808	26,232
1996	269,714	7,839	6,592	5,760	80.3	83.1	9,433.9	8,205	7,169	34,977	30,421	26,581
1997	272,958	8,332	7,001	6,075	82.2	84.6	9,854.3	8,519	7,392	36,102	31,208	27,080
1998	276,154	8,794	7,525	6,499	83.5	85.5	10,283.5	9,017	7,787	37,238	32,651	28,197
1999	279,328	9,354	7,911	6,803	85.3	86.8	10,779.8	9,274	7,975	38,592	33,200	28,552
2000	282,418	9,952	8,559	7,327	88.2	88.6	11,226.0	9,708	8,310	39,750	34,373	29,425
2001	285,335	10,286	8,883	7,649	90.7	90.6	11,347.2	9,796	8,435	39,768	34,332	29,560
2002	288,133	10,642	9,060	8,010	92.1	92.1	11,553.0	9,836	8,695	40,096	34,136	30,178
2003	290,845	11,142	9,378	8,378	94.2	94.1	11,840.7	9,954	8,892	40,711	34,225	30,574
2004	293,502	11,868	9,937	8,889	96.7	96.8	12,263.8	10,274	9,191	41,784	35,004	31,314
2005	296,229	12,638	10,486	9,277	100.0	100.0	12,638.4	10,486	9,277	42,664	35,398	31,318
2006	299,052	13,399	11,268	9,916	103.2	103.3	12,976.2	10,916	9,606	43,391	36,502	32,121
2007	302,025	14,062	11,912	10,424	106.2	106.3	13,228.9	11,220	9,818	43,801	37,151	32,508
2008	304,831	14,369	12,391	10,953	110.2	108.6	13,228.8	11,240	9,935	43,397	36,873	32,593
2009	307,483	14,119	12,175	11,035	109.8	109.6	12,880.6	11,083	10,045	41,890	36,045	32,670
Average annual rates of growth, %												
61-73	1.20	8.07	8.25	8.16	3.35	3.41	4.51	4.74	4.65	3.27	3.51	3.42
73-81	1.03	10.74	11.12	10.90	9.37	8.05	2.49	1.60	1.39	1.45	0.57	0.36
81-89	0.91	7.27	7.36	7.51	3.96	3.64	3.50	3.27	3.41	2.57	2.34	2.48
89-00	1.21	5.57	5.90	5.68	3.03	2.23	3.26	2.78	2.57	2.03	1.55	1.34
89-96	1.24	5.24	5.41	5.38	3.42	2.58	2.59	1.93	1.89	1.33	0.68	0.64
96-08	1.03	5.18	5.40	5.50	2.67	2.26	2.86	2.66	2.76	1.81	1.62	1.71
89-08	1.11	5.20	5.41	5.46	2.95	2.38	2.76	2.39	2.44	1.64	1.27	1.32
96-00	1.16	6.15	6.75	6.20	2.35	1.63	4.44	4.29	3.76	3.25	3.10	2.57
00-08	0.96	4.70	4.73	5.15	2.83	2.57	2.07	1.85	2.26	1.10	0.88	1.29
89-09	1.09	4.84	5.04	5.22	2.78	2.30	2.48	2.20	2.37	1.38	1.09	1.26
96-09	1.01	4.63	4.83	5.13	2.44	2.15	2.42	2.34	2.63	1.40	1.31	1.60
00-09	0.95	3.96	3.99	4.65	2.47	2.39	1.54	1.48	2.13	0.58	0.53	1.17

Source:

[A]: BEA, Table 2.1 in the NIPA tables, as of October 4, 2010.

[B]: Bureau of Economic Analysis NIPA Tables 1.1.5 as of October 4, 2010.

[C]-[D]: PI and PDI in current dollars, BEA, Table 2.1 in NIPA Tables, as of October 4, 2010.

[E]: Bureau of Labour Statistics series CUUR0000SA0, CUUS0000SA0, calculated annual data by using monthly data average and reindexed to 2005=100, as of October 4, 2010.

[G]: BEA, Table 1.1.6., as of October 4, 2010.

Note: Real GDP is expressed in 2005 chained dollars, PI and PDI are deflated using the CPI.

Table 2A: Aggregate Income Trends in the United States- Annual % Change, 1962-2009

Year	Population, annual average of mid-quarter estimates, annual % change	GDP, billion 2005\$ annual % change	PI, billion 2005\$ annual % change	PDI, billion 2005\$ annual % change	CPI, 2005=100 annual % change	GDP defl., 2005=100 annual % change	GDP per capita annual % change	PI per capita annual % change	PDI per capita annual % change
	A	B	C	D	E	F	G	H	I
1961									
1962	1.55	6.06	5.38	5.05	1.00	1.37	4.44	3.77	3.45
1963	1.45	4.37	3.69	3.59	1.32	1.06	2.88	2.20	2.11
1964	1.39	5.79	5.87	7.37	1.31	1.54	4.34	4.42	5.90
1965	1.26	6.42	6.30	5.97	1.61	1.83	5.10	4.97	4.65
1966	1.16	6.52	5.68	4.96	2.86	2.84	5.29	4.47	3.75
1967	1.10	2.53	4.12	3.81	3.09	3.07	1.42	3.00	2.69
1968	1.00	4.84	5.40	4.25	4.19	4.25	3.80	4.35	3.22
1969	0.99	3.11	3.70	2.28	5.46	4.94	2.09	2.68	1.27
1970	1.16	0.19	1.92	3.25	5.72	5.28	-0.96	0.75	2.06
1971	1.27	3.36	3.17	4.39	4.38	5.00	2.06	1.88	3.08
1972	1.07	5.31	6.49	5.06	3.21	4.32	4.19	5.36	3.95
1973	0.96	5.79	5.33	5.96	6.22	5.55	4.79	4.33	4.96
1974	0.92	-0.55	-0.84	-1.32	11.04	9.08	-1.46	-1.75	-2.22
1975	0.97	-0.21	0.04	1.52	9.13	9.45	-1.18	-0.92	0.54
1976	0.97	5.37	4.45	3.71	5.76	5.74	4.35	3.45	2.71
1977	1.01	4.60	3.94	3.46	6.50	6.37	3.55	2.90	2.43
1978	1.06	5.58	4.57	4.10	7.59	7.02	4.47	3.47	3.01
1979	1.11	3.12	0.70	0.07	11.35	8.32	1.99	-0.41	-1.04
1980	1.16	-0.27	-1.54	-1.47	13.50	9.11	-1.42	-2.67	-2.61
1981	1.00	2.54	1.71	1.26	10.32	9.37	1.52	0.70	0.25
1982	0.96	-1.94	0.93	1.59	6.16	6.10	-2.88	-0.03	0.62
1983	0.91	4.52	3.38	4.40	3.21	3.95	3.58	2.45	3.46
1984	0.88	7.19	6.15	6.62	4.32	3.76	6.25	5.22	5.69
1985	0.89	4.14	3.29	2.83	3.56	3.03	3.22	2.38	1.92
1986	0.91	3.46	3.77	3.90	1.86	2.21	2.53	2.83	2.96
1987	0.90	3.20	2.44	1.70	3.65	2.90	2.28	1.53	0.80
1988	0.91	4.11	3.53	4.16	4.14	3.43	3.17	2.60	3.22
1989	0.95	3.57	2.76	2.19	4.82	3.78	2.60	1.79	1.23
1990	1.13	1.88	0.89	1.12	5.40	3.86	0.74	-0.23	-0.01
1991	1.34	-0.23	-0.38	0.27	4.21	3.55	-1.55	-1.70	-1.06
1992	1.34	3.39	3.17	3.45	3.01	2.37	2.03	1.81	2.08
1993	1.31	2.85	1.10	0.88	2.99	2.21	1.52	-0.20	-0.42
1994	1.22	4.07	2.87	2.71	2.56	2.11	2.82	1.64	1.47
1995	1.19	2.51	2.64	2.36	2.83	2.08	1.31	1.44	1.16
1996	1.17	3.74	3.25	2.52	2.95	1.90	2.54	2.06	1.33
1997	1.20	4.46	3.82	3.10	2.29	1.77	3.21	2.59	1.88
1998	1.17	4.36	5.85	5.34	1.56	1.13	3.15	4.62	4.12
1999	1.15	4.83	2.85	2.42	2.21	1.47	3.64	1.68	1.26
2000	1.11	4.14	4.68	4.20	3.36	2.16	3.00	3.53	3.06
2001	1.03	1.08	0.91	1.50	2.85	2.26	0.05	-0.12	0.46
2002	0.98	1.81	0.40	3.09	1.58	1.62	0.82	-0.57	2.09
2003	0.94	2.49	1.20	2.27	2.28	2.15	1.53	0.26	1.31
2004	0.91	3.57	3.21	3.35	2.66	2.84	2.64	2.28	2.42
2005	0.93	3.05	2.06	0.94	3.39	3.34	2.11	1.12	0.01
2006	0.95	2.67	4.10	3.54	3.23	3.26	1.70	3.12	2.56
2007	0.99	1.95	2.79	2.21	2.85	2.94	0.94	1.78	1.20
2008	0.93	0.00	0.17	1.19	3.84	2.19	-0.92	-0.75	0.26
2009	0.87	-2.63	-1.39	1.11	-0.36	0.92	-3.47	-2.24	0.24

Source: Table 2.

Table 3: Relative Aggregate Income Levels in Canada and the United States, 1961-2009

Year	Canada									United States				Canada as % of US		
	GDP per capita, current CAD\$	PI per capita, current CAD\$	PDI per capita, current CAD\$	GDP PPP exchange rate, US\$/CAD\$	Individual Consumption PPP exchange rate, US\$/CAD\$	GDP per capita, current US\$	PI per capita, current US\$	PDI per capita, current US\$	PDI/PI ratio, %	GDP per capita, current US\$	PI per capita, current US\$	PDI per capita, current US\$	PDI/PI ratio, %	GDP per capita	PI per capita	PDI per capita
	A	B	C	D	E	F=A*D	G=B*E	H=C*E	I=H/G*100	J	K	L	M=L/K*100	N=F/J*100	O=G/K*100	P=H/L*100
1961	2,259	1,678	1,513	1.106	0.924	2,500	1,549	1,398	90.21	2,965	2,334	2,077	88.99	84.31	66.39	67.30
1962	2,405	1,790	1,616	1.106	0.921	2,660	1,649	1,488	90.27	3,139	2,446	2,170	88.72	84.76	67.40	68.58
1963	2,535	1,875	1,693	1.096	0.922	2,779	1,728	1,560	90.27	3,264	2,533	2,245	88.63	85.16	68.23	69.49
1964	2,726	1,979	1,771	1.082	0.917	2,949	1,814	1,624	89.51	3,458	2,680	2,409	89.89	85.29	67.69	67.41
1965	2,951	2,134	1,903	1.063	0.909	3,136	1,941	1,731	89.18	3,700	2,858	2,561	89.61	84.76	67.90	67.57
1966	3,241	2,355	2,061	1.042	0.898	3,377	2,115	1,850	87.51	4,007	3,071	2,733	89.00	84.28	68.85	67.70
1967	3,423	2,525	2,177	1.028	0.895	3,517	2,259	1,948	86.22	4,188	3,261	2,894	88.74	83.99	69.28	67.32
1968	3,679	2,719	2,312	1.029	0.898	3,785	2,440	2,076	85.06	4,532	3,545	3,112	87.78	83.51	68.84	66.70
1969	3,993	2,984	2,488	1.030	0.903	4,112	2,696	2,248	83.38	4,856	3,839	3,324	86.57	84.68	70.23	67.64
1970	4,236	3,191	2,624	1.038	0.927	4,398	2,958	2,432	82.22	5,063	4,089	3,586	87.71	86.88	72.34	67.82
1971	4,526	3,433	2,808	1.040	0.940	4,707	3,226	2,639	81.82	5,425	4,348	3,859	88.74	86.75	74.19	68.40
1972	4,954	3,810	3,133	1.024	0.926	5,075	3,527	2,900	82.24	5,897	4,728	4,140	87.55	86.06	74.59	70.06
1973	5,743	4,396	3,616	0.986	0.912	5,661	4,011	3,299	82.26	6,522	5,240	4,615	88.08	86.80	76.54	71.49
1974	6,764	5,188	4,236	0.933	0.913	6,314	4,734	3,866	81.65	7,010	5,716	5,010	87.65	90.06	82.82	77.15
1975	7,515	5,940	4,879	0.923	0.900	6,936	5,344	4,389	82.13	7,583	6,181	5,497	88.94	91.47	86.47	79.84
1976	8,542	6,693	5,458	0.891	0.887	7,612	5,938	4,843	81.55	8,366	6,762	5,971	88.31	90.99	87.82	81.09
1977	9,326	7,330	5,980	0.888	0.875	8,279	6,411	5,231	81.59	9,216	7,411	6,514	87.90	89.83	86.51	80.30
1978	10,231	8,102	6,690	0.891	0.864	9,117	6,999	5,779	82.57	10,303	8,250	7,220	87.51	88.49	84.84	80.05
1979	11,567	9,033	7,477	0.878	0.880	10,152	7,951	6,582	82.78	11,382	9,149	7,956	86.96	89.19	86.90	82.73
1980	12,848	10,162	8,403	0.870	0.908	11,177	9,229	7,631	82.69	12,243	10,106	8,794	87.02	91.29	91.32	86.77
1981	14,544	11,733	9,627	0.860	0.891	12,508	10,449	8,574	82.05	13,594	11,227	9,726	86.63	92.01	93.07	88.15
1982	15,144	12,828	10,503	0.840	0.852	12,721	10,935	8,953	81.88	14,009	11,915	10,390	87.20	90.80	91.77	86.17
1983	16,237	13,381	10,875	0.820	0.831	13,315	11,124	9,041	81.27	15,084	12,598	11,094	88.06	88.27	88.30	81.49
1984	17,578	14,362	11,697	0.830	0.831	14,590	11,942	9,726	81.44	16,629	13,828	12,232	88.45	87.74	86.36	79.51
1985	18,816	15,413	12,513	0.830	0.828	15,618	12,766	10,364	81.18	17,683	14,661	12,911	88.06	88.32	87.08	80.27
1986	19,662	16,333	13,059	0.820	0.810	16,123	13,234	10,581	79.95	18,531	15,356	13,540	88.17	87.00	86.18	78.14
1987	21,174	17,339	13,720	0.810	0.804	17,151	13,945	11,035	79.13	19,504	16,160	14,146	87.54	87.94	86.29	78.00
1988	22,918	18,786	14,774	0.800	0.806	18,335	15,137	11,904	78.64	20,813	17,266	15,206	88.07	88.09	87.67	78.29
1989	24,168	20,074	15,902	0.790	0.804	19,093	16,139	12,784	79.22	22,160	18,423	16,134	87.58	86.16	87.60	79.24
1990	24,606	21,228	16,553	0.800	0.808	19,685	17,162	13,383	77.98	23,185	19,373	17,004	87.77	84.90	88.59	78.70
1991	24,489	21,629	16,883	0.800	0.798	19,591	17,254	13,468	78.06	23,635	19,846	17,532	88.34	82.89	86.94	76.82
1992	24,731	21,912	17,066	0.810	0.810	20,032	17,749	13,823	77.88	24,686	20,813	18,436	88.58	81.15	85.28	74.98
1993	25,380	22,095	17,275	0.820	0.810	20,812	17,897	13,992	78.18	25,616	21,393	18,909	88.39	81.25	83.66	74.00
1994	26,618	22,319	17,323	0.830	0.830	22,093	18,524	14,378	77.62	26,893	22,299	19,678	88.25	82.15	83.07	73.07
1995	27,695	22,968	17,756	0.820	0.840	22,710	19,293	14,915	77.31	27,813	23,260	20,470	88.00	81.65	82.94	72.86
1996	28,301	23,240	17,849	0.830	0.850	23,490	19,754	15,171	76.80	29,062	24,439	21,354	87.38	80.83	80.83	71.05
1997	29,555	23,956	18,286	0.830	0.850	24,531	20,362	15,543	76.33	30,526	25,648	22,255	86.77	80.36	79.39	69.84
1998	30,374	24,841	18,881	0.840	0.840	25,514	20,867	15,860	76.01	31,843	27,251	23,534	86.36	80.12	76.57	67.39
1999	32,352	25,787	19,634	0.840	0.840	27,176	21,661	16,493	76.14	33,486	28,321	24,356	86.00	81.16	76.48	67.71
2000	35,128	27,421	20,869	0.810	0.840	28,454	23,034	17,530	76.10	35,237	30,308	25,945	85.60	80.75	76.00	67.57
2001	35,777	28,300	21,607	0.820	0.840	29,337	23,772	18,150	76.35	36,050	31,133	26,805	86.10	81.38	76.36	67.71
2002	36,827	28,711	22,168	0.810	0.840	29,830	24,118	18,622	77.21	36,935	31,444	27,799	88.41	80.76	76.70	66.99
2003	38,392	29,487	22,812	0.820	0.840	31,482	24,769	19,162	77.36	38,309	32,244	28,805	89.33	82.18	76.82	66.52
2004	40,467	30,851	23,839	0.810	0.850	32,778	26,223	20,263	77.27	40,435	33,857	30,287	89.46	81.06	77.45	66.90
2005	42,660	32,156	24,663	0.820	0.850	34,981	27,333	20,964	76.70	42,664	35,398	31,318	88.47	81.99	77.22	66.94
2006	44,583	34,022	26,225	0.830	0.870	37,004	29,599	22,816	77.08	44,805	37,679	33,157	88.00	82.59	78.55	68.81
2007	46,516	35,723	27,420	0.830	0.870	38,608	31,079	23,855	76.76	46,558	39,441	34,512	87.50	82.92	78.80	69.12
2008	48,090	36,817	28,545	0.820	0.890	39,433	32,767	25,405	77.53	47,138	40,649	35,931	88.39	83.66	80.61	70.70
2009	45,362	36,485	28,680	0.845	0.885	38,347	32,272	25,368	78.61	45,918	39,595	35,888	90.64	83.51	81.50	70.69

Source: Tables 1 and 2.

The GDP PPPs for 1980-2008 are from Statistics Canada, CANSIMII v647898.

The GDP PPPs for 1961-1979 were calculated by multiplying the 1980 PPP estimate by the index value (1980=1.00) of the US GDP deflator as a percentage of the Canadian GDP deflator in each year.

The GDP PPP for 2009 was calculated by multiplying the 2008 PPP estimate by the index value (2008=1.00) of the US GDP deflator as a percentage of the Canadian GDP deflator.

The Individual Consumption PPPs for 1992-2008 are from Statistics Canada, CANSIMII v13930469.

The Individual Consumption PPPs for 1961-1991 were calculated by multiplying the 1992 PPP estimate by the index value (1992=1.00) of the US CPI as a percentage of the Canadian CPI in each year.

Table 4: Productivity in the Total Economy, Canada, 1961-2009

Year	GDP at market prices, millions 2002\$	Number of Jobs, thous.	Total hours actually worked, mill.	Actual hours per week per job	Geom. End-Year Net Capital Stock, mil 2002\$	GDP per Job, \$	GDP per hour, \$	GDP per unit of Capital Stock, \$	GDP per hour, Index, 2002=100
	A	B	C	D=(C*1000/52)/B	E	F=A/B*1000	G=A/C	H=A/D	I
1961	264,475	6,454	13,255	39.49	323,214	40,979	19.95	0.818	na
1962	282,972	6,650	13,665	39.52	334,933	42,550	20.71	0.845	na
1963	297,989	6,814	13,888	39.19	347,211	43,731	21.46	0.858	na
1964	317,283	7,063	14,330	39.02	363,596	44,925	22.14	0.873	na
1965	337,487	7,325	14,744	38.71	384,471	46,074	22.89	0.878	na
1966	359,913	7,718	15,420	38.42	410,956	46,631	23.34	0.876	na
1967	370,406	7,945	15,808	38.26	433,819	46,621	23.43	0.854	na
1968	388,481	8,081	15,795	37.59	452,581	48,071	24.59	0.858	na
1969	408,033	8,318	16,121	37.27	471,007	49,057	25.31	0.866	na
1970	420,398	8,384	16,095	36.91	489,426	50,140	26.12	0.859	na
1971	437,709	8,555	16,292	36.62	508,961	51,164	26.87	0.860	na
1972	461,546	8,783	16,639	36.43	528,221	52,551	27.74	0.874	na
1973	493,689	9,192	17,348	36.29	551,325	53,707	28.46	0.895	na
1974	511,911	9,553	17,943	36.12	576,549	53,588	28.53	0.888	na
1975	521,243	9,700	18,029	35.74	603,033	53,738	28.91	0.864	na
1976	548,344	9,838	18,190	35.56	625,407	55,736	30.15	0.877	na
1977	567,307	10,011	18,323	35.20	646,853	56,669	30.96	0.877	na
1978	589,736	10,295	18,877	35.26	667,472	57,283	31.24	0.884	na
1979	612,175	10,751	19,636	35.12	693,079	56,940	31.18	0.883	na
1980	625,414	11,096	19,938	34.55	722,727	56,364	31.37	0.865	na
1981	647,323	11,437	20,534	34.53	758,833	56,601	31.52	0.853	74.4
1982	628,816	11,078	19,637	34.09	779,239	56,762	32.02	0.807	75.5
1983	645,906	11,160	19,691	33.93	790,590	57,878	32.80	0.817	77.4
1984	683,462	11,437	20,235	34.03	801,328	59,761	33.78	0.853	79.7
1985	716,132	11,787	20,956	34.19	816,469	60,755	34.17	0.877	80.6
1986	733,468	12,150	21,581	34.16	829,902	60,370	33.99	0.884	80.2
1987	764,664	12,528	22,363	34.33	848,388	61,039	34.19	0.901	80.6
1988	802,702	12,960	23,205	34.43	875,910	61,936	34.59	0.916	81.6
1989	823,728	13,276	23,654	34.26	905,013	62,048	34.82	0.910	82.1
1990	825,318	13,346	23,674	34.11	928,037	61,841	34.86	0.889	82.2
1991	808,051	13,108	22,974	33.71	945,841	61,645	35.17	0.854	83.0
1992	815,123	13,019	22,804	33.69	952,431	62,612	35.74	0.856	84.3
1993	834,185	13,163	23,069	33.70	955,533	63,375	36.16	0.873	85.3
1994	874,261	13,404	23,600	33.86	965,879	65,222	37.05	0.905	87.4
1995	898,814	13,626	23,960	33.81	974,899	65,961	37.51	0.922	88.5
1996	913,364	13,763	24,286	33.94	982,766	66,365	37.61	0.929	88.7
1997	951,962	14,022	24,780	33.99	1,004,540	67,893	38.42	0.948	90.6
1998	990,968	14,336	25,327	33.97	1,025,352	69,124	39.13	0.966	92.3
1999	1,045,786	14,717	26,035	34.02	1,047,714	71,062	40.17	0.998	94.8
2000	1,100,515	15,051	26,606	34.00	1,069,853	73,121	41.36	1.029	97.6
2001	1,120,146	15,205	26,792	33.89	1,087,480	73,670	41.81	1.030	98.7
2002	1,152,905	15,586	27,189	33.55	1,096,280	73,969	42.40	1.052	100.0
2003	1,174,592	15,916	27,600	33.35	1,111,436	73,799	42.56	1.057	100.3
2004	1,211,239	16,193	28,379	33.70	1,135,832	74,799	42.68	1.066	100.6
2005	1,247,807	16,459	28,612	33.43	1,172,760	75,815	43.61	1.064	102.9
2006	1,283,033	16,758	29,126	33.42	1,216,488	76,564	44.05	1.055	103.9
2007	1,311,260	17,102	29,717	33.42	1,252,165	76,672	44.12	1.047	104.1
2008	1,318,055	17,363	30,023	33.25	1,292,283	75,911	43.90	1.020	103.6
2009	1,285,604	17,067	29,024	32.70	1,303,817	75,326	44.29	0.986	104.5
Average annual rates of growth									
61-73	5.34	2.99	2.27	-0.70	4.55	2.28	3.00	0.75	n.a
73-81	3.44	2.77	2.13	-0.62	4.07	0.66	1.29	-0.60	n.a
81-89	3.06	1.88	1.78	-0.10	2.23	1.15	1.25	0.81	1.24
89-00	2.67	1.15	1.07	-0.07	1.53	1.50	1.58	1.12	1.58
89-96	1.49	0.52	0.38	-0.14	1.18	0.97	1.10	0.30	1.10
96-08	3.10	1.96	1.78	-0.17	2.31	1.13	1.30	0.78	1.30
89-08	2.50	1.42	1.26	-0.16	1.89	1.07	1.23	0.60	1.23
96-00	4.77	2.26	2.31	0.04	2.15	2.45	2.41	2.57	2.42
00-08	2.28	1.80	1.52	-0.28	2.39	0.47	0.75	-0.11	0.75
89-09	2.25	1.26	1.03	-0.23	1.84	0.97	1.21	0.40	1.21
96-09	2.66	1.67	1.38	-0.28	2.20	0.98	1.27	0.46	1.27
00-09	1.74	1.41	0.97	-0.43	2.22	0.33	0.76	-0.47	0.76

Sources: Column A - Statistics Canada, GDP Data, see Table 1; Columns B and C - Productivity Program Database, based primarily on the Labour Force Survey, with adjustments from the Survey of Employment, Payrolls and Hours, and other administrative sources - CANSIM II series v15900147, linked to V29509277 for 1981-1996 and 2007-2009, and to v716374 before 1981 and v15900411 linked to v29509279 between 1981 and 1997 and to v716818 before 1981; Column D - CANSIM II v4419841; Column E - CANSIM II v29509280
Current as of October 4, 2010.

Table 4A: Productivity in the Total Economy, Canada- Annual % Change, 1962-2009

Year	GDP at market prices, millions 2002 \$	Number of Jobs, thous.	Actual hours per week per job	Total hours actually worked, mill.	Geom. End-Year Net Capital Stock, mil 2002\$	GDP per Job, \$	GDP per hour, \$	GDP per unit of Capital Stock, \$
	A	B	C	D	E	F	G	H
1961								
1962	6.99	3.04	0.06	3.10	3.63	3.83	3.78	3.25
1963	5.31	2.46	-0.82	1.63	3.67	2.77	3.62	1.58
1964	6.47	3.64	-0.44	3.19	4.72	2.73	3.18	1.68
1965	6.37	3.72	-0.80	2.89	5.74	2.56	3.38	0.59
1966	6.64	5.37	-0.74	4.59	6.89	1.21	1.97	-0.23
1967	2.92	2.94	-0.41	2.52	5.56	-0.02	0.39	-2.51
1968	4.88	1.72	-1.77	-0.08	4.32	3.11	4.97	0.53
1969	5.03	2.92	-0.84	2.06	4.07	2.05	2.91	0.92
1970	3.03	0.80	-0.96	-0.16	3.91	2.21	3.20	-0.85
1971	4.12	2.03	-0.79	1.23	3.99	2.04	2.85	0.12
1972	5.45	2.66	-0.52	2.13	3.78	2.71	3.25	1.60
1973	6.96	4.66	-0.39	4.26	4.37	2.20	2.60	2.48
1974	3.69	3.92	-0.47	3.43	4.58	-0.22	0.25	-0.85
1975	1.82	1.54	-1.05	0.48	4.59	0.28	1.34	-2.65
1976	5.20	1.43	-0.53	0.89	3.71	3.72	4.27	1.44
1977	3.46	1.76	-1.00	0.73	3.43	1.67	2.71	0.03
1978	3.95	2.84	0.18	3.02	3.19	1.08	0.91	0.74
1979	3.80	4.43	-0.39	4.02	3.84	-0.60	-0.21	-0.03
1980	2.16	3.21	-1.62	1.54	4.28	-1.01	0.62	-2.03
1981	3.50	3.07	-0.08	2.99	5.00	0.42	0.50	-1.42
1982	-2.86	-3.13	-1.27	-4.37	2.69	0.28	1.58	-5.40
1983	2.72	0.74	-0.46	0.28	1.46	1.96	2.43	1.24
1984	5.81	2.48	0.28	2.76	1.36	3.25	2.97	4.40
1985	4.78	3.07	0.48	3.56	1.89	1.66	1.18	2.84
1986	2.42	3.07	-0.09	2.98	1.65	-0.63	-0.55	0.76
1987	4.25	3.11	0.50	3.62	2.23	1.11	0.61	1.98
1988	4.97	3.45	0.31	3.77	3.24	1.47	1.16	1.68
1989	2.62	2.44	-0.49	1.93	3.32	0.18	0.67	-0.68
1990	0.19	0.53	-0.44	0.09	2.54	-0.33	0.11	-2.29
1991	-2.09	-1.78	-1.20	-2.96	1.92	-0.32	0.89	-3.94
1992	0.88	-0.68	-0.06	-0.74	0.70	1.57	1.63	0.18
1993	2.34	1.11	0.05	1.16	0.33	1.22	1.16	2.01
1994	4.80	1.84	0.45	2.30	1.08	2.92	2.45	3.68
1995	2.81	1.66	-0.13	1.53	0.93	1.13	1.26	1.86
1996	1.62	1.00	0.36	1.36	0.81	0.61	0.25	0.81
1997	4.23	1.88	0.15	2.04	2.22	2.30	2.15	1.97
1998	4.10	2.24	-0.03	2.21	2.07	1.81	1.85	1.98
1999	5.53	2.65	0.14	2.80	2.18	2.80	2.66	3.28
2000	5.23	2.27	-0.08	2.19	2.11	2.90	2.98	3.06
2001	1.78	1.03	-0.32	0.70	1.65	0.75	1.08	0.13
2002	2.92	2.51	-1.00	1.48	0.81	0.41	1.42	2.10
2003	1.88	2.11	-0.59	1.51	1.38	-0.23	0.36	0.49
2004	3.12	1.74	1.06	2.82	2.19	1.35	0.29	0.91
2005	3.02	1.64	-0.81	0.82	3.25	1.36	2.18	-0.22
2006	2.82	1.82	-0.02	1.80	3.73	0.99	1.01	-0.87
2007	2.20	2.06	-0.02	2.03	2.93	0.14	0.17	-0.71
2008	0.52	1.53	-0.49	1.03	3.20	-0.99	-0.51	-2.60
2009	-2.46	-1.71	-1.65	-3.33	0.89	-0.77	0.90	-3.32

Source: Table 4.

Table 5: Productivity in the Total Economy, United States, 1961-2009

Year	GDP at market prices, billions 2005\$	Number of Jobs, mill.	Actual hours per week per job	Total hours actually worked, bill.	End-Year Net Capital Stock, bill. 2005\$	GDP per Job, \$	GDP per hour, \$	GDP per unit of Capital Stock, \$
	A	B	(C*1000/52)/B	C	D	A/B*1000	A/C	A/D
1961	2,897	71.78	35.67	133.12	6,079	40,360	21.76	0.477
1962	3,072	73.23	35.83	136.46	6,288	41,953	22.51	0.489
1963	3,207	73.86	35.82	137.55	6,503	43,417	23.31	0.493
1964	3,392	75.40	36.00	141.13	6,749	44,993	24.04	0.503
1965	3,610	77.58	36.19	145.98	7,044	46,537	24.73	0.513
1966	3,845	80.51	36.09	151.09	7,384	47,759	25.45	0.521
1967	3,943	82.40	35.65	152.75	7,702	47,845	25.81	0.512
1968	4,133	84.37	35.45	155.52	8,011	48,994	26.58	0.516
1969	4,262	86.71	35.33	159.30	8,320	49,149	26.75	0.512
1970	4,270	86.54	34.78	156.51	8,589	49,342	27.28	0.497
1971	4,413	86.67	34.57	155.82	8,819	50,921	28.32	0.500
1972	4,648	88.79	34.68	160.12	9,070	52,348	29.03	0.512
1973	4,917	91.97	34.55	165.24	9,376	53,464	29.76	0.524
1974	4,890	93.35	34.16	165.84	9,667	52,381	29.49	0.506
1975	4,880	91.78	33.75	161.09	9,885	53,167	30.29	0.494
1976	5,141	94.25	33.82	165.76	10,110	54,551	31.02	0.509
1977	5,378	97.86	33.72	171.59	10,368	54,955	31.34	0.519
1978	5,678	102.57	33.69	179.66	10,703	55,354	31.60	0.530
1979	5,855	105.85	33.52	184.52	11,083	55,315	31.73	0.528
1980	5,839	106.46	33.24	184.01	11,429	54,847	31.73	0.511
1981	5,987	107.32	33.04	184.39	11,782	55,787	32.47	0.508
1982	5,871	105.97	32.96	181.65	12,063	55,399	32.32	0.487
1983	6,136	106.86	33.28	184.91	12,314	57,425	33.19	0.498
1984	6,577	111.26	33.57	194.24	12,688	59,115	33.86	0.518
1985	6,849	114.03	33.51	198.68	13,103	60,064	34.47	0.523
1986	7,087	116.04	33.31	201.01	13,465	61,068	35.26	0.526
1987	7,313	119.11	33.33	206.45	13,805	61,399	35.42	0.530
1988	7,614	122.66	33.34	212.62	14,145	62,075	35.81	0.538
1989	7,886	125.43	33.50	218.49	14,494	62,871	36.09	0.544
1990	8,034	126.94	33.16	218.87	14,841	63,288	36.71	0.541
1991	8,015	126.01	32.93	215.77	15,104	63,606	37.15	0.531
1992	8,287	125.87	32.99	215.95	15,352	65,840	38.38	0.540
1993	8,523	128.09	33.18	221.00	15,640	66,544	38.57	0.545
1994	8,871	131.41	33.35	227.92	15,952	67,503	38.92	0.556
1995	9,094	134.48	33.40	233.53	16,335	67,624	38.94	0.557
1996	9,434	136.84	33.23	236.45	16,779	68,942	39.90	0.562
1997	9,854	139.90	33.45	243.37	17,196	70,438	40.49	0.573
1998	10,284	142.74	33.49	248.61	17,743	72,042	41.36	0.580
1999	10,780	145.19	33.57	253.47	18,337	74,248	42.53	0.588
2000	11,226	147.74	33.43	256.85	18,975	75,984	43.71	0.592
2001	11,347	147.40	33.10	253.71	19,474	76,985	44.72	0.583
2002	11,553	145.71	33.05	250.41	19,843	79,289	46.14	0.582
2003	11,841	145.73	32.87	249.11	20,189	81,250	47.53	0.586
2004	12,264	147.35	32.88	251.91	20,555	83,230	48.68	0.597
2005	12,638	149.71	32.86	255.79	20,936	84,420	49.41	0.604
2006	12,976	152.19	32.91	260.45	21,415	85,264	49.82	0.606
2007	13,229	153.47	32.86	262.26	21,927	86,201	50.44	0.603
2008	13,229	152.32	32.75	259.40	22,403	86,848	51.00	0.591
2009	12,881	146.02	32.32	245.38	22,617	88,214	52.49	0.570
Average annual rates of growth								
61-73	4.51	2.09	-0.26	1.82	3.68	2.37	2.64	0.80
73-81	2.49	1.95	-0.56	1.38	2.90	0.53	1.10	-0.39
81-89	3.50	1.97	0.17	2.14	2.62	1.51	1.33	0.86
89-00	3.26	1.50	-0.02	1.48	2.48	1.74	1.76	0.76
89-96	2.59	1.25	-0.12	1.13	2.11	1.33	1.44	0.47
96-08	2.86	0.90	-0.12	0.77	2.44	1.94	2.07	0.41
89-08	2.76	1.03	-0.12	0.91	2.32	1.71	1.84	0.43
96-00	4.44	1.94	0.15	2.09	3.12	2.46	2.30	1.28
00-08	2.07	0.38	-0.26	0.12	2.10	1.68	1.95	-0.02
89-09	2.48	0.76	-0.18	0.58	2.25	1.71	1.89	0.23
96-09	2.42	0.50	-0.21	0.29	2.32	1.91	2.13	0.10
00-09	1.54	-0.13	-0.38	-0.51	1.97	1.67	2.06	-0.42

Sources:
[A]: Bureau of Economic Analysis, see Table 2;
[B]-[C]: Bureau of Labor Statistics unpublished data, based primarily on the Current Employment Statistics establishment survey, with adjustments from the household-based Current Population Survey and other sources; data reflect the BLS news release of September 2, 2010.
[D]: chained dollar estimates of private plus government non-residential net stocks for 1995-2009 are from Fixed Assets Table 9.1. Values for 1961-1994 are based on the annual growth rates of the corresponding chain-type quantity indexes from FA Table 1.2. Current as of October 5, 2010. Real GDP and capital stock data are expressed in chained 2005 dollars.

**Table 5A: Productivity in the Total Economy, United States,
Annual % Change, 1962-2009**

Year	GDP at market prices, billions 2005 \$	Number of Jobs, mill.	Actual hours per week per job	Total hours actually worked, bill.	End-Year Net Capital Stock, bill. 2005\$	GDP per Job, \$	GDP per hour, \$	GDP per unit of Capital Stock, \$
	A	B	C	D	E	F	G	H
1961								
1962	6.06	2.03	0.47	2.51	3.45	3.95	3.46	2.52
1963	4.37	0.85	-0.05	0.80	3.41	3.49	3.55	0.93
1964	5.79	2.08	0.50	2.60	3.78	3.63	3.11	1.93
1965	6.42	2.89	0.53	3.44	4.37	3.43	2.88	1.96
1966	6.52	3.79	-0.28	3.50	4.82	2.63	2.91	1.61
1967	2.53	2.34	-1.21	1.10	4.31	0.18	1.41	-1.71
1968	4.84	2.38	-0.56	1.81	4.01	2.40	2.98	0.80
1969	3.11	2.78	-0.34	2.43	3.87	0.32	0.66	-0.73
1970	0.19	-0.20	-1.55	-1.75	3.23	0.39	1.98	-2.94
1971	3.36	0.15	-0.59	-0.44	2.67	3.20	3.82	0.67
1972	5.31	2.44	0.31	2.76	2.86	2.80	2.48	2.39
1973	5.79	3.59	-0.38	3.20	3.37	2.13	2.52	2.35
1974	-0.55	1.50	-1.12	0.36	3.11	-2.02	-0.91	-3.55
1975	-0.21	-1.69	-1.20	-2.86	2.25	1.50	2.73	-2.41
1976	5.37	2.69	0.20	2.90	2.28	2.60	2.40	3.02
1977	4.60	3.83	-0.30	3.52	2.55	0.74	1.04	1.99
1978	5.58	4.81	-0.10	4.71	3.22	0.73	0.83	2.28
1979	3.12	3.20	-0.48	2.71	3.55	-0.07	0.41	-0.41
1980	-0.27	0.58	-0.85	-0.28	3.12	-0.85	0.01	-3.29
1981	2.54	0.81	-0.60	0.21	3.09	1.71	2.32	-0.53
1982	-1.94	-1.26	-0.24	-1.49	2.38	-0.70	-0.46	-4.22
1983	4.52	0.83	0.96	1.79	2.09	3.66	2.68	2.38
1984	7.19	4.12	0.89	5.04	3.03	2.94	2.04	4.03
1985	4.14	2.49	-0.20	2.29	3.27	1.61	1.81	0.84
1986	3.46	1.76	-0.58	1.17	2.76	1.67	2.27	0.68
1987	3.20	2.64	0.06	2.71	2.53	0.54	0.48	0.66
1988	4.11	2.98	0.01	2.98	2.46	1.10	1.09	1.61
1989	3.57	2.26	0.49	2.76	2.47	1.28	0.79	1.07
1990	1.88	1.20	-1.02	0.17	2.39	0.66	1.70	-0.50
1991	-0.23	-0.73	-0.69	-1.42	1.77	0.50	1.20	-1.97
1992	3.39	-0.11	0.19	0.08	1.64	3.51	3.31	1.73
1993	2.85	1.76	0.57	2.34	1.88	1.07	0.50	0.96
1994	4.07	2.60	0.52	3.13	1.99	1.44	0.92	2.04
1995	2.51	2.33	0.13	2.46	2.41	0.18	0.05	0.11
1996	3.74	1.76	-0.50	1.25	2.72	1.95	2.46	1.00
1997	4.46	2.24	0.68	2.93	2.49	2.17	1.48	1.92
1998	4.36	2.03	0.12	2.15	3.18	2.28	2.16	1.14
1999	4.83	1.71	0.24	1.96	3.35	3.06	2.81	1.43
2000	4.14	1.76	-0.42	1.33	3.48	2.34	2.77	0.64
2001	1.08	-0.23	-0.99	-1.22	2.63	1.32	2.33	-1.51
2002	1.81	-1.14	-0.16	-1.30	1.90	2.99	3.16	-0.08
2003	2.49	0.02	-0.53	-0.52	1.74	2.47	3.02	0.73
2004	3.57	1.11	0.01	1.12	1.81	2.44	2.42	1.73
2005	3.05	1.60	-0.06	1.54	1.85	1.43	1.49	1.18
2006	2.67	1.66	0.16	1.82	2.29	1.00	0.83	0.38
2007	1.95	0.84	-0.14	0.69	2.39	1.10	1.25	-0.44
2008	0.00	-0.75	-0.35	-1.09	2.17	0.75	1.10	-2.12
2009	-2.63	-4.14	-1.32	-5.40	0.95	1.57	2.93	-3.55

Source: Table 5.

Table 6: Annual Indexes of Productivity in the Business Sector in Canada and the United States, 2005=100, 1946-2009

Year	Canada					United States				
	Output	Employment	Hours Worked	Output per Worker	Output per Hour	Output	Employment	Hours Worked	Output per Worker	Output per Hour
	A	B	C	D=A/B	E	F	G	H	I	J
1946	9.85	34.57	45.70	28.48	21.57	n.a	n.a	n.a	n.a	n.a
1947	10.44	36.10	46.62	28.93	22.51	12.62	46.34	53.64	27.24	23.54
1948	10.86	36.71	47.38	29.59	22.97	13.31	46.86	54.03	28.40	24.63
1949	11.16	37.16	47.69	30.03	23.36	13.18	45.83	52.31	28.76	25.19
1950	11.93	37.16	46.62	32.11	25.70	14.46	46.28	53.03	31.25	27.27
1951	12.89	38.08	47.46	33.85	27.18	15.40	47.50	54.73	32.41	28.13
1952	13.84	38.38	47.61	36.07	29.12	15.87	47.72	54.85	33.25	28.93
1953	14.38	38.53	47.77	37.32	30.14	16.64	48.40	55.54	34.39	29.97
1954	14.08	38.31	47.23	36.76	29.83	16.44	47.20	53.68	34.82	30.62
1955	15.63	38.76	47.46	40.33	33.10	17.77	48.58	55.67	36.57	31.91
1956	17.07	40.28	49.15	42.36	34.81	18.06	49.58	56.52	36.42	31.95
1957	17.13	40.89	49.38	41.88	34.73	18.36	49.47	55.72	37.12	32.96
1958	17.36	39.68	47.54	43.77	36.60	18.03	47.59	53.22	37.89	33.89
1959	18.26	40.36	48.23	45.24	37.92	19.51	49.07	55.43	39.77	35.20
1960	18.68	40.21	47.69	46.45	39.17	19.89	49.33	55.52	40.32	35.82
1961	19.09	40.36	47.31	47.31	40.34	20.28	48.81	54.70	41.54	37.07
1962	20.41	41.35	48.61	49.35	41.97	21.58	49.43	55.68	43.67	38.77
1963	21.60	42.26	49.30	51.11	43.84	22.58	49.71	56.06	45.43	40.28
1964	23.09	43.71	50.76	52.83	45.56	24.01	50.63	57.67	47.42	41.63
1965	24.82	45.46	52.37	54.60	47.42	25.71	52.09	59.63	49.35	43.11
1966	26.55	47.90	54.82	55.44	48.51	27.45	53.63	61.18	51.17	44.86
1967	27.15	48.81	55.51	55.62	48.90	27.97	54.36	61.01	51.46	45.85
1968	28.64	49.12	55.05	58.31	52.10	29.36	55.45	61.93	52.96	47.41
1969	30.07	50.34	55.89	59.75	53.81	30.26	57.18	63.50	52.93	47.65
1970	30.79	50.18	55.20	61.35	55.76	30.25	57.02	62.25	53.06	48.61
1971	32.34	51.02	55.89	63.39	57.94	31.42	57.12	62.08	55.00	50.61
1972	34.37	52.16	56.81	65.89	60.51	33.44	58.80	64.02	56.87	52.23
1973	37.24	54.83	59.50	67.91	62.69	35.78	61.33	66.47	58.35	53.84
1974	38.31	56.96	61.49	67.25	62.30	35.25	62.27	66.59	56.61	52.93
1975	38.37	57.42	61.26	66.82	62.69	34.92	60.40	63.71	57.81	54.81
1976	40.99	58.10	61.72	70.55	66.50	37.23	62.27	65.82	59.78	56.56
1977	42.25	58.87	61.87	71.77	68.37	39.30	64.96	68.35	60.49	57.50
1978	43.68	60.54	63.79	72.15	68.53	41.77	68.55	71.85	60.94	58.14
1979	45.59	63.51	66.70	71.78	68.37	43.16	71.20	74.28	60.62	58.11
1980	46.54	65.57	67.70	70.99	68.76	42.67	71.38	73.62	59.78	57.96
1981	49.11	67.93	69.92	72.30	70.24	43.86	72.09	74.13	60.84	59.17
1982	47.10	64.88	66.00	72.59	71.38	42.53	70.92	72.46	59.98	58.70
1983	48.76	65.12	65.86	74.88	74.01	44.82	71.54	73.73	62.66	60.80
1984	52.12	67.02	68.09	77.76	76.54	48.72	75.15	78.04	64.82	62.42
1985	54.91	69.43	70.90	79.09	77.41	50.98	77.02	79.85	66.19	63.84
1986	56.39	71.71	73.25	78.64	76.98	52.88	78.29	80.49	67.54	65.70
1987	59.19	74.19	76.27	79.78	77.63	54.62	80.42	82.89	67.92	65.89
1988	61.99	76.93	79.24	80.58	78.24	56.96	82.87	85.17	68.73	66.88
1989	63.75	78.83	80.86	80.86	78.85	59.07	84.66	87.42	69.77	67.58
1990	63.28	78.88	80.46	80.23	78.68	59.98	85.22	86.91	70.38	69.01
1991	60.95	76.69	77.25	79.47	78.92	59.45	83.89	84.86	70.87	70.06
1992	61.41	75.88	76.22	80.93	80.50	61.80	83.42	84.66	74.09	73.00
1993	63.01	76.88	77.53	81.95	81.28	63.79	85.18	86.95	74.90	73.37
1994	66.89	78.95	79.98	84.72	83.64	66.92	88.05	90.39	76.00	74.04
1995	69.16	80.79	81.65	85.60	84.68	68.80	90.53	92.89	76.00	74.07
1996	70.61	82.31	83.52	85.79	84.54	71.94	92.52	94.37	77.75	76.23
1997	74.52	84.55	85.92	88.14	86.70	75.66	95.01	97.54	79.64	77.57
1998	78.27	86.90	88.21	90.06	88.74	79.44	96.96	99.44	81.94	79.89
1999	83.42	89.64	91.04	93.06	91.64	83.88	98.53	101.42	85.14	82.71
2000	88.44	91.93	93.22	96.20	94.85	87.68	100.21	102.45	87.50	85.59
2001	89.85	92.79	93.68	96.84	95.92	88.38	99.40	100.27	88.92	88.14
2002	92.49	95.24	95.10	97.11	97.25	90.11	97.19	97.83	92.71	92.11
2003	93.87	96.71	96.34	97.06	97.42	92.89	96.97	97.16	95.79	95.61
2004	96.92	98.48	99.29	98.42	97.62	96.75	98.23	98.35	98.49	98.37
2005	100.00	100.00	100.00	100.00	100.00	100.00	100.00	100.00	100.00	100.00
2006	102.73	101.69	101.64	101.02	101.07	103.06	101.85	102.09	101.18	100.94
2007	104.65	103.76	103.52	100.85	101.07	105.15	102.59	102.60	102.50	102.49
2008	104.32	104.95	104.18	99.40	100.15	104.17	101.09	100.51	103.04	103.64
2009	100.16	102.19	99.64	98.01	100.53	100.36	95.50	93.55	105.10	107.28
Average Annual Growth Rates										
47-73	5.01	1.62	0.94	3.34	4.02	4.09	1.08	0.83	2.97	3.23
73-81	3.52	2.71	2.04	0.79	1.43	2.58	2.04	1.37	0.52	1.19
81-89	3.31	1.88	1.83	1.41	1.46	3.79	2.03	2.08	1.73	1.67
89-00	3.02	1.41	1.30	1.59	1.69	3.66	1.54	1.45	2.08	2.17
89-96	1.47	0.62	0.46	0.85	1.00	2.85	1.28	1.10	1.56	1.74
96-08	3.31	2.05	1.86	1.23	1.42	3.13	0.74	0.53	2.37	2.59
89-08	2.63	1.52	1.34	1.09	1.27	3.03	0.94	0.74	2.07	2.28
96-00	5.79	2.80	2.78	2.91	2.92	5.07	2.02	2.07	3.00	2.94
00-08	2.09	1.67	1.40	0.41	0.68	2.18	0.11	-0.24	2.07	2.42
89-09	2.29	1.31	1.05	0.97	1.22	2.69	0.60	0.34	2.07	2.34
96-09	2.73	1.68	1.37	1.03	1.34	2.59	0.24	-0.07	2.35	2.66
00-09	1.39	1.18	0.74	0.21	0.65	1.51	-0.53	-1.00	2.06	2.54

Source:

Data for Canada from Aggregate Productivity Measures, CANSIM II v1409154, v1409157, v1409155 and v1409153 for 1981-2005 converted to annual averages, linked to series v719180, v719402, v719846 and v720290 for previous years, and re-based to 2005=100. Current as of October 5, 2010.

Data for US from BLS series PRS84006043, PRS84006013, PRS84006033, PRS84006163 and PRS84006093. Current as of October 5, 2010.

Note: Output per worker and output per hour series do not directly coincide with those published by Statistics Canada and BLS because they have been rebased and may differ due to rounding.

**Table 6A: Annual Productivity in the Business Sector in Canada and the United States,
Annual % Change, 1947-2009**

Year	Canada					United States				
	Output A	Employment B	Hours Worked C	Output per Worker D	Output per Hour E	Output F	Employment G	Hours Worked H	Output per Worker I	Output per Hour J
1946										
1947	6.06	4.41	2.01	1.59	4.33					
1948	4.00	1.69	1.64	2.27	2.08	5.43	1.13	0.74	4.25	4.65
1949	2.75	1.24	0.65	1.48	1.69	-0.97	-2.21	-3.19	1.27	2.29
1950	6.95	0.00	-2.25	6.95	10.00	9.74	0.98	1.38	8.67	8.24
1951	8.00	2.46	1.81	5.41	5.76	6.46	2.64	3.19	3.72	3.16
1952	7.41	0.80	0.32	6.55	7.16	3.07	0.47	0.23	2.58	2.84
1953	3.88	0.40	0.32	3.47	3.48	4.88	1.41	1.25	3.43	3.59
1954	-2.07	-0.59	-1.12	-1.49	-1.03	-1.25	-2.47	-3.35	1.25	2.18
1955	11.02	1.19	0.49	9.71	10.97	8.09	2.91	3.71	5.03	4.22
1956	9.16	3.93	3.55	5.03	5.18	1.63	2.06	1.52	-0.42	0.10
1957	0.35	1.51	0.47	-1.15	-0.22	1.71	-0.23	-1.42	1.94	3.17
1958	1.39	-2.98	-3.73	4.51	5.38	-1.79	-3.79	-4.49	2.07	2.82
1959	5.15	1.73	1.45	3.37	3.62	8.21	3.09	4.17	4.96	3.88
1960	2.29	-0.38	-1.11	2.68	3.29	1.91	0.53	0.16	1.37	1.74
1961	2.24	0.38	-0.80	1.85	2.98	1.95	-1.05	-1.48	3.04	3.49
1962	6.88	2.45	2.76	4.32	4.05	6.45	1.28	1.79	5.11	4.58
1963	5.85	2.21	1.42	3.56	4.45	4.62	0.56	0.68	4.04	3.91
1964	6.91	3.42	2.95	3.37	3.91	6.34	1.86	2.88	4.39	3.35
1965	7.49	4.01	3.17	3.35	4.10	7.06	2.89	3.40	4.05	3.55
1966	6.97	5.36	4.69	1.53	2.30	6.77	2.95	2.60	3.70	4.06
1967	2.25	1.91	1.26	0.33	0.80	1.92	1.35	-0.28	0.55	2.20
1968	5.49	0.62	-0.83	4.84	6.53	4.97	2.00	1.50	2.91	3.42
1969	5.00	2.48	1.53	2.46	3.29	3.06	3.12	2.54	-0.06	0.50
1970	2.38	-0.30	-1.23	2.69	3.62	-0.02	-0.28	-1.98	0.26	2.00
1971	5.04	1.67	1.25	3.31	3.91	3.84	0.18	-0.27	3.66	4.12
1972	6.27	2.24	1.65	3.95	4.44	6.44	2.94	3.13	3.40	3.22
1973	8.33	5.11	4.72	3.07	3.60	7.01	4.30	3.82	2.59	3.07
1974	2.88	3.89	3.35	-0.97	-0.62	-1.49	1.53	0.18	-2.98	-1.67
1975	0.16	0.80	-0.37	-0.64	0.63	-0.94	-3.00	-4.33	2.12	3.55
1976	6.84	1.19	0.75	5.58	6.09	6.61	3.09	3.32	3.41	3.18
1977	3.06	1.31	0.25	1.72	2.81	5.56	4.33	3.84	1.18	1.66
1978	3.39	2.85	3.10	0.53	0.23	6.30	5.52	5.12	0.75	1.12
1979	4.37	4.91	4.57	-0.51	-0.23	3.32	3.87	3.38	-0.54	-0.06
1980	2.09	3.24	1.49	-1.11	0.57	-1.13	0.26	-0.88	-1.38	-0.25
1981	5.51	3.60	3.28	1.85	2.15	2.78	0.99	0.68	1.77	2.08
1982	-4.10	-4.49	-5.61	0.41	1.63	-3.03	-1.64	-2.25	-1.41	-0.79
1983	3.53	0.37	-0.22	3.16	3.68	5.38	0.88	1.75	4.46	3.57
1984	6.88	2.93	3.39	3.84	3.42	8.68	5.05	5.85	3.46	2.68
1985	5.37	3.59	4.12	1.72	1.14	4.65	2.49	2.32	2.10	2.27
1986	2.69	3.29	3.32	-0.58	-0.57	3.73	1.65	0.79	2.05	2.92
1987	4.96	3.45	4.12	1.46	0.85	3.29	2.72	2.99	0.56	0.29
1988	4.73	3.69	3.90	1.00	0.78	4.29	3.05	2.74	1.20	1.50
1989	2.83	2.48	2.04	0.35	0.78	3.70	2.16	2.64	1.51	1.03
1990	-0.73	0.06	-0.50	-0.79	-0.22	1.54	0.66	-0.58	0.87	2.13
1991	-3.69	-2.78	-3.99	-0.94	0.31	-0.88	-1.56	-2.36	0.69	1.52
1992	0.76	-1.06	-1.32	1.83	2.00	3.95	-0.57	-0.24	4.54	4.19
1993	2.60	1.32	1.72	1.26	0.97	3.22	2.11	2.70	1.10	0.51
1994	6.17	2.69	3.16	3.38	2.90	4.90	3.38	3.96	1.48	0.90
1995	3.39	2.32	2.08	1.04	1.25	2.81	2.81	2.77	0.00	0.04
1996	2.11	1.89	2.30	0.22	-0.17	4.56	2.20	1.59	2.30	2.92
1997	5.53	2.72	2.88	2.74	2.56	5.18	2.69	3.35	2.43	1.76
1998	5.03	2.79	2.66	2.18	2.36	5.00	2.06	1.95	2.88	2.99
1999	6.59	3.15	3.21	3.33	3.26	5.59	1.62	1.99	3.91	3.52
2000	6.01	2.55	2.40	3.38	3.50	4.53	1.71	1.01	2.77	3.48
2001	1.59	0.93	0.48	0.66	1.13	0.80	-0.81	-2.12	1.62	2.99
2002	2.93	2.64	1.52	0.28	1.39	1.96	-2.22	-2.44	4.27	4.50
2003	1.50	1.55	1.30	-0.05	0.17	3.08	-0.23	-0.69	3.32	3.80
2004	3.25	1.82	3.06	1.40	0.20	4.15	1.29	1.22	2.82	2.89
2005	3.17	1.55	0.72	1.60	2.44	3.36	1.81	1.68	1.53	1.65
2006	2.73	1.69	1.64	1.02	1.07	3.06	1.85	2.09	1.18	0.94
2007	1.87	2.04	1.85	-0.17	0.00	2.03	0.73	0.49	1.30	1.53
2008	-0.31	1.15	0.64	-1.44	-0.91	-0.94	-1.46	-2.03	0.53	1.12
2009	-3.99	-2.63	-4.36	-1.39	0.39	-3.65	-5.54	-6.93	2.00	3.52

Source: Table 6.

Table 6C: Quarterly Productivity in the Business Sector in Canada and the United States, Year-over-Year % Change, 1988Q1-2010Q2

Quarter	Canada					United States				
	Output	Employment	Hours Worked	Output per Worker	Output per Hour	Output	Employment	Hours Worked	Output per Worker	Output per Hour
	A	B	C	D	E	F	G	H	I	J
1988Q1	6.06	4.84	5.22	1.16	1.00	4.33	2.98	2.35	1.31	1.93
1988Q2	5.52	3.87	4.52	1.59	0.88	4.67	3.30	3.12	1.33	1.50
1988Q3	4.19	3.19	3.47	0.97	0.63	4.34	2.98	2.68	1.32	1.62
1988Q4	3.21	2.90	2.44	0.30	0.62	3.82	2.95	2.82	0.84	0.97
1989Q1	3.01	3.12	2.42	-0.11	0.50	4.47	3.07	3.72	1.36	0.73
1989Q2	2.99	2.61	2.04	0.37	1.00	3.63	2.13	2.58	1.47	1.02
1989Q3	3.13	2.72	2.03	0.40	1.00	4.03	1.94	2.74	2.06	1.26
1989Q4	2.22	1.47	1.67	0.74	0.62	2.71	1.52	1.55	1.17	1.14
1990Q1	1.31	0.73	0.59	0.58	0.74	2.76	1.18	0.71	1.56	2.04
1990Q2	-0.15	0.61	-0.12	-0.75	-0.12	2.30	1.10	-0.16	1.19	2.46
1990Q3	-1.45	-0.36	-0.94	-1.09	-0.37	1.26	0.52	-1.27	0.73	2.56
1990Q4	-2.60	-0.72	-1.53	-1.89	-1.11	-0.14	-0.16	-1.58	0.02	1.46
1991Q1	-5.19	-3.37	-4.35	-1.89	-0.86	-2.03	-1.30	-2.72	-0.73	0.71
1991Q2	-4.65	-2.89	-4.24	-1.82	-0.37	-1.48	-1.78	-2.73	0.31	1.29
1991Q3	-3.23	-2.42	-3.79	-0.83	0.50	-0.83	-1.63	-2.07	0.82	1.26
1991Q4	-1.63	-2.43	-3.58	0.82	2.00	0.85	-1.51	-1.92	2.39	2.82
1992Q1	0.30	-0.62	-1.11	0.93	1.36	3.08	-1.39	-1.41	4.53	4.56
1992Q2	0.91	-1.36	-1.60	2.31	2.48	3.43	-0.77	-0.27	4.23	3.71
1992Q3	0.76	-1.49	-1.72	2.28	2.34	4.15	-0.36	-0.04	4.53	4.20
1992Q4	1.06	-0.75	-0.87	1.82	1.83	5.11	0.27	0.79	4.83	4.28
1993Q1	1.97	0.38	0.37	1.59	1.59	3.70	1.54	2.07	2.13	1.59
1993Q2	2.27	1.01	1.75	1.25	0.60	3.29	2.00	2.64	1.26	0.63
1993Q3	2.56	1.89	2.50	0.66	0.24	2.75	2.30	2.97	0.44	-0.21
1993Q4	3.59	2.01	2.24	1.55	1.44	3.18	2.58	3.12	0.58	0.05
1994Q1	4.75	1.50	2.10	3.21	2.64	4.39	2.74	3.14	1.61	1.22
1994Q2	6.20	2.49	2.70	3.63	3.49	5.22	3.14	3.84	2.02	1.34
1994Q3	7.04	3.09	3.42	3.83	3.36	5.18	3.87	4.52	1.26	0.63
1994Q4	6.64	3.69	4.39	2.84	2.13	4.81	3.74	4.34	1.03	0.45
1995Q1	6.38	4.05	3.88	2.24	2.34	3.77	3.73	4.31	0.03	-0.52
1995Q2	3.89	2.55	2.27	1.31	1.51	2.32	3.16	2.64	-0.81	-0.31
1995Q3	1.92	1.68	1.30	0.24	0.70	2.82	2.36	2.39	0.45	0.43
1995Q4	1.49	1.07	0.93	0.42	0.46	2.37	2.03	1.78	0.34	0.58
1996Q1	0.27	1.53	1.98	-1.25	-1.60	3.09	1.85	0.95	1.22	2.12
1996Q2	1.34	2.13	2.46	-0.77	-1.14	4.96	1.97	1.54	2.93	3.36
1996Q3	3.23	2.12	2.56	1.08	0.58	4.89	2.17	1.35	2.66	3.49
1996Q4	3.60	1.76	2.20	1.81	1.50	5.27	2.82	2.52	2.38	2.69
1997Q1	4.92	1.74	1.72	3.12	3.02	5.25	3.02	3.84	2.17	1.36
1997Q2	5.68	2.09	2.40	3.52	3.24	5.02	2.85	3.61	2.11	1.36
1997Q3	5.73	3.11	3.30	2.54	2.41	5.46	2.62	3.40	2.77	1.99
1997Q4	5.79	3.92	4.08	1.80	1.59	4.98	2.26	2.58	2.66	2.34
1998Q1	5.83	2.74	3.49	3.00	2.37	5.20	1.90	1.91	3.24	3.23
1998Q2	4.87	3.29	3.01	1.53	1.68	4.43	2.12	1.92	2.26	2.47
1998Q3	4.43	2.57	2.31	1.81	2.13	4.50	2.16	1.52	2.30	2.94
1998Q4	4.99	2.55	1.85	2.37	3.24	5.85	2.05	2.46	3.73	3.31
1999Q1	5.51	3.56	2.61	1.88	2.75	5.79	1.52	1.79	4.21	3.93
1999Q2	6.56	2.97	3.35	3.48	3.20	5.60	1.62	2.00	3.92	3.53
1999Q3	7.19	3.27	3.55	3.80	3.51	5.53	1.62	2.54	3.85	2.91
1999Q4	7.07	2.81	3.31	4.14	3.58	5.43	1.72	1.65	3.65	3.73
2000Q1	6.81	2.79	2.97	3.91	3.75	4.53	2.45	2.24	2.04	2.24
2000Q2	6.49	2.77	2.30	3.61	4.06	6.05	1.96	1.46	4.01	4.52
2000Q3	6.16	2.11	2.08	3.96	4.03	4.56	1.58	0.82	2.93	3.71
2000Q4	4.65	2.53	2.28	2.07	2.20	3.02	0.85	-0.16	2.15	3.18
2001Q1	3.19	2.19	1.95	0.97	1.14	2.36	0.52	-0.74	1.83	3.12
2001Q2	2.00	1.45	0.92	0.53	1.13	0.73	-0.50	-1.74	1.24	2.51
2001Q3	0.31	0.31	-0.20	0.00	0.51	0.13	-1.29	-2.91	1.43	3.13
2001Q4	0.93	-0.21	-0.71	1.14	1.74	0.04	-1.96	-3.39	2.04	3.55
2002Q1	1.96	0.82	-0.10	1.13	2.15	1.55	-3.14	-4.00	4.84	5.78
2002Q2	2.47	1.84	1.12	0.62	1.22	1.34	-2.57	-2.85	4.01	4.30
2002Q3	3.72	3.81	2.14	-0.09	1.62	2.66	-2.08	-2.02	4.84	4.77
2002Q4	3.59	4.12	2.95	-0.51	0.60	2.28	-1.05	-0.81	3.37	3.12
2003Q1	2.42	2.84	2.32	-0.40	0.10	1.63	-0.35	-0.62	1.98	2.26
2003Q2	1.51	1.71	1.00	-0.20	0.60	2.22	-0.64	-1.28	2.88	3.55
2003Q3	0.90	0.70	0.70	0.20	0.10	3.89	-0.06	-0.60	3.95	4.52
2003Q4	1.19	0.99	1.19	0.20	-0.10	4.56	0.13	-0.25	4.42	4.83
2004Q1	1.58	0.99	1.88	0.59	-0.30	5.12	0.43	0.66	4.67	4.44
2004Q2	3.27	1.88	3.67	1.36	-0.40	4.88	1.47	1.32	3.36	3.51
2004Q3	4.15	2.56	4.06	1.54	0.10	3.22	1.63	1.54	1.57	1.66
2004Q4	4.01	1.86	2.64	2.11	1.40	3.44	1.65	1.38	1.77	2.04
2005Q1	3.59	2.25	1.84	1.32	1.70	3.69	1.97	1.35	1.69	2.30
2005Q2	3.07	1.65	0.67	1.40	2.30	3.29	1.94	2.06	1.32	1.20
2005Q3	2.94	1.15	0.10	1.76	2.89	3.45	1.66	1.59	1.76	1.83
2005Q4	3.10	1.15	0.29	1.93	2.86	3.04	1.65	1.72	1.37	1.30
2006Q1	4.03	1.05	0.86	2.95	3.15	3.51	1.96	2.35	1.52	1.14
2006Q2	3.16	1.72	1.90	1.42	1.37	3.44	1.82	1.79	1.59	1.62
2006Q3	2.12	1.90	1.90	0.21	0.10	2.42	1.83	2.18	0.57	0.23
2006Q4	1.64	2.09	1.90	-0.44	-0.29	2.86	1.78	2.06	1.06	0.79
2007Q1	0.99	2.55	1.51	-1.52	-0.57	1.31	1.25	1.18	0.06	0.13
2007Q2	1.89	2.06	1.40	-0.17	0.39	1.93	0.96	1.04	0.96	0.89
2007Q3	2.34	1.49	2.15	0.84	0.29	2.59	0.44	0.10	2.14	2.48
2007Q4	2.24	2.05	2.33	0.19	-0.10	2.30	0.27	-0.33	2.03	2.64
2008Q1	1.25	2.03	2.32	-0.76	-1.06	1.74	-0.23	-0.65	1.97	2.41
2008Q2	0.09	1.56	1.29	-1.45	-1.06	0.62	-0.81	-1.23	1.44	1.87
2008Q3	-0.44	1.19	0.46	-1.62	-0.87	-1.49	-1.40	-2.02	-0.09	0.55
2008Q4	-2.11	-0.18	-1.46	-1.93	-0.67	-4.54	-3.41	-4.25	-1.17	-0.30
2009Q1	-4.14	-2.71	-4.18	-1.47	0.10	-5.58	-5.01	-6.32	-0.60	0.79
2009Q2	-4.86	-3.17	-5.18	-1.75	0.29	-5.52	-6.11	-7.82	0.64	2.51
2009Q3	-4.69	-2.72	-4.82	-2.02	0.10	-3.65	-6.18	-7.90	2.70	4.61
2009Q4	-2.24	-1.92	-3.23	-0.33	1.07	0.30	-4.82	-5.62	5.38	6.27
2010Q1	2.02	0.56	0.38	1.46	1.65	3.16	-2.97	-2.94	6.31	6.28
2010Q2	3.62	2.52	2.78	1.07	0.78	3.66	-1.14	-0.02	4.86	3.68

Source: Table 6B.

Note: growth rates do not directly coincide with those reported by BLS because BLS calculates growth rates from source data rather than index numbers.

Table 6D: Quarterly Productivity in the Business Sector in Canada and the United States, Quarter-to-Quarter Compound Annualized Growth Rates, 1987Q2-2009Q4

Quarter	Canada					United States				
	Output	Employment	Hours Worked	Output per Worker	Output per Hour	Output	Employment	Hours Worked	Output per Worker	Output per Hour
	A	B	C	D	E	F	G	H	I	J
1987Q1										
1987Q2	4.54	5.88	6.26	-1.27	-1.00	5.01	3.11	2.51	1.84	2.44
1987Q3	6.46	4.19	5.64	2.18	1.01	3.03	2.79	2.53	0.23	0.49
1987Q4	7.01	5.74	5.04	1.20	1.51	7.87	3.31	4.14	4.42	3.59
1988Q1	6.25	3.57	3.97	2.58	2.52	1.51	2.70	0.26	-1.16	1.23
1988Q2	2.43	2.01	3.43	0.41	-1.48	6.39	4.40	5.64	1.90	0.71
1988Q3	1.20	1.50	1.45	-0.29	0.00	1.76	1.55	0.77	0.21	0.97
1988Q4	3.01	4.53	0.96	-1.45	1.50	5.73	3.19	4.72	2.47	0.97
1989Q1	5.43	4.48	3.87	0.91	2.00	4.08	3.15	3.81	0.90	0.26
1989Q2	2.36	0.00	1.90	2.36	0.49	2.98	0.64	1.06	2.32	1.90
1989Q3	1.75	1.95	1.42	-0.19	0.00	3.37	0.79	1.43	2.56	1.91
1989Q4	-0.58	-0.48	-0.47	-0.10	0.00	0.45	1.52	-0.06	-1.05	0.51
1990Q1	1.75	1.46	-0.47	0.29	2.49	4.27	1.77	0.41	2.46	3.84
1990Q2	-3.41	-0.48	-0.94	-2.95	-2.91	1.17	0.32	-2.36	0.84	3.61
1990Q3	-3.44	-1.91	-1.87	-1.56	-0.98	-0.79	-1.48	-3.03	0.70	2.32
1990Q4	-5.18	-1.92	-2.81	-3.32	-2.94	-5.00	-1.23	-1.29	-3.82	-3.76
1991Q1	-8.62	-8.92	-11.40	0.33	3.54	-3.37	-2.80	-4.17	-0.59	0.83
1991Q2	-1.21	1.50	-0.49	-2.67	-0.99	3.45	-1.62	-2.42	5.15	6.01
1991Q3	2.46	0.00	0.00	2.46	2.50	1.86	-0.87	-0.34	2.75	2.21
1991Q4	1.22	-1.97	-1.95	3.25	2.99	1.59	-0.73	-0.70	2.33	2.30
1992Q1	-1.20	-1.98	-1.96	0.79	0.98	5.48	-2.31	-2.18	7.98	7.83
1992Q2	1.22	-1.49	-2.46	2.75	3.46	4.84	0.84	2.17	3.97	2.61
1992Q3	1.83	-0.50	-0.50	2.34	1.95	4.75	0.79	0.58	3.91	4.14
1992Q4	2.43	1.01	1.51	1.40	0.97	5.36	1.80	2.66	3.50	2.63
1993Q1	2.41	2.53	3.03	-0.12	0.00	-0.07	2.72	2.89	-2.71	-2.87
1993Q2	2.40	1.00	3.00	1.38	-0.48	3.20	2.71	4.47	0.48	-1.22
1993Q3	2.99	3.02	2.48	-0.03	0.48	2.59	1.99	1.87	0.59	0.71
1993Q4	6.61	1.49	0.49	5.04	5.89	7.11	2.92	3.27	4.07	3.72
1994Q1	7.11	0.49	2.46	6.58	4.82	4.72	3.35	2.94	1.33	1.72
1994Q2	8.18	5.01	5.44	3.03	2.84	6.53	4.33	7.34	2.11	-0.75
1994Q3	6.26	5.45	5.37	0.77	0.00	2.41	4.91	4.59	-2.38	-2.08
1994Q4	5.02	3.89	4.32	1.09	0.93	5.62	2.38	2.56	3.16	2.99
1995Q1	6.09	1.91	0.47	4.10	5.68	0.61	3.32	2.84	-2.63	-2.17
1995Q2	-1.59	-0.94	-0.93	-0.66	-0.46	0.71	2.03	0.61	-1.30	0.10
1995Q3	-1.60	1.91	1.41	-3.44	-3.17	4.45	1.71	3.56	2.69	0.86
1995Q4	3.27	1.42	2.83	1.82	0.00	3.78	1.04	0.17	2.71	3.61
1996Q1	1.07	3.81	4.71	-2.64	-2.74	3.44	2.60	-0.50	0.83	3.96
1996Q2	2.69	1.40	0.92	1.27	1.40	8.22	2.52	2.99	5.55	5.08
1996Q3	5.94	1.87	1.84	4.00	3.76	4.17	2.53	2.80	1.60	1.33
1996Q4	4.77	0.00	1.37	4.77	3.72	5.31	3.64	4.85	1.61	0.44
1997Q1	6.32	3.74	2.75	2.49	3.22	3.38	3.40	4.73	-0.02	-1.30
1997Q2	5.69	2.77	3.65	2.84	2.27	7.24	1.82	2.08	5.32	5.06
1997Q3	6.14	6.03	5.46	0.10	0.45	5.95	1.63	1.99	4.25	3.88
1997Q4	5.02	3.17	4.47	1.79	0.45	3.43	2.21	1.55	1.19	1.85
1998Q1	6.48	-0.88	0.44	7.43	6.41	4.24	1.96	2.03	2.25	2.16
1998Q2	1.93	4.98	1.75	-2.91	-0.44	4.12	2.69	2.09	1.39	1.99
1998Q3	4.36	3.11	2.62	1.21	2.22	6.25	1.78	0.44	4.40	5.79
1998Q4	7.27	3.09	2.61	4.05	4.91	8.87	1.76	5.34	6.98	3.35
1999Q1	8.61	3.06	3.46	5.38	4.40	4.01	-0.12	-0.60	4.14	4.63
1999Q2	6.03	2.60	4.74	3.34	1.29	3.37	3.08	2.93	0.28	0.44
1999Q3	6.88	4.34	3.39	2.44	3.46	5.94	1.77	2.58	4.09	3.28
1999Q4	6.77	1.27	1.67	5.42	5.18	8.47	2.15	1.71	6.19	6.65
2000Q1	7.56	2.98	2.08	4.45	5.12	0.51	2.78	1.76	-2.20	-1.23
2000Q2	4.76	2.53	2.07	2.17	2.50	9.50	1.13	-0.19	8.28	9.70
2000Q3	5.58	1.67	2.48	3.84	3.33	0.11	0.29	0.01	-0.18	0.10
2000Q4	0.83	2.93	2.46	-2.04	-2.02	2.23	-0.77	-2.17	3.02	4.49
2001Q1	1.66	1.65	0.81	0.01	0.82	-2.05	1.43	-0.60	-3.43	-1.46
2001Q2	0.00	-0.41	-2.00	0.41	2.47	2.70	-2.91	-4.15	5.78	7.16
2001Q3	-1.23	-2.84	-2.01	1.65	0.81	-2.26	-2.84	-4.66	0.60	2.52
2001Q4	3.35	0.83	0.41	2.50	2.87	1.85	-3.44	-4.10	5.48	6.21
2002Q1	5.86	5.89	3.30	-0.02	2.44	4.00	-3.37	-3.07	7.63	7.30
2002Q2	2.04	3.70	2.86	-1.61	-1.19	1.85	-0.61	0.53	2.47	1.31
2002Q3	3.67	4.91	2.02	-1.19	2.43	2.94	-0.89	-1.38	3.86	4.38
2002Q4	2.82	2.00	3.64	0.80	-1.19	0.37	0.70	0.71	-0.33	-0.34
2003Q1	1.19	0.79	0.79	0.40	0.40	1.37	-0.59	-2.32	1.97	3.78
2003Q2	-1.57	-0.79	-2.35	-0.79	0.80	4.26	-1.78	-2.09	6.15	6.48
2003Q3	1.19	0.79	0.80	0.40	0.40	9.82	1.45	1.33	8.24	8.37
2003Q4	4.01	3.19	5.67	0.79	-1.98	2.99	1.48	2.14	1.49	0.84
2004Q1	2.77	0.79	3.57	1.96	-0.40	3.57	0.62	1.30	2.93	2.24
2004Q2	5.14	2.76	4.73	2.32	0.40	3.28	2.34	0.50	0.92	2.76
2004Q3	4.68	3.54	2.32	1.11	2.42	3.06	2.10	2.23	0.94	0.81
2004Q4	3.46	0.39	0.00	3.06	3.22	3.87	1.55	1.49	2.28	2.35
2005Q1	1.13	2.33	0.38	-1.17	0.79	4.55	1.88	1.21	2.62	3.30
2005Q2	3.03	0.38	0.00	2.64	2.79	1.70	2.24	3.34	-0.53	-1.59
2005Q3	4.16	1.54	0.00	2.58	4.78	3.70	0.98	0.36	2.68	3.33
2005Q4	4.11	0.38	0.76	3.72	3.13	2.25	1.51	1.99	0.74	0.25
2006Q1	4.83	1.91	2.69	2.86	1.93	6.46	3.13	3.73	3.22	2.63
2006Q2	-0.36	3.06	4.22	-3.32	-4.14	1.44	1.69	1.12	-0.25	0.31
2006Q3	0.00	2.27	0.00	-2.22	-0.39	-0.36	1.02	1.88	-1.37	-2.21
2006Q4	2.18	1.12	0.75	1.05	1.55	4.05	1.30	1.52	2.72	2.49
2007Q1	2.17	3.77	1.12	-1.54	0.77	0.17	0.98	0.19	-0.80	-0.02
2007Q2	3.25	1.11	3.77	2.12	-0.38	3.96	0.54	0.57	3.39	3.38
2007Q3	1.78	0.00	2.98	1.78	-0.77	2.24	-1.03	-1.83	3.30	4.15
2007Q4	1.77	3.35	1.47	-1.53	0.00	2.87	0.58	-0.23	2.27	3.10
2008Q1	-1.74	3.70	1.10	-5.25	-3.05	-2.00	-0.99	-1.09	-1.01	-0.93
2008Q2	-1.40	-0.72	-0.36	-0.69	-0.39	-0.55	-1.79	-1.75	1.26	1.22
2008Q3	-0.35	-1.44	-0.36	1.10	0.00	-6.05	-3.35	-4.96	-2.80	-1.15
2008Q4	-4.86	-2.16	-6.05	-2.76	0.78	-9.31	-7.38	-9.00	-2.08	-0.34
2009Q1	-9.66	-6.41	-9.61	-3.47	0.00	-6.19	-7.40	-9.35	1.31	3.49
2009Q2	-4.34	-2.57	-4.47	-1.81	0.39	-0.29	-6.26	-7.92	6.37	8.29
2009Q3	0.37	0.37	1.16	0.00	-0.77	1.58	-3.64	-5.27	5.42	7.23
2009Q4	5.30	1.13	0.38	4.13	4.74	6.50	-1.89	0.34	8.56	6.15

Source: Table 6B.

Note: growth rates do not directly coincide with those reported by BLS because BLS calculates growth rates from source data rather than index numbers.

**Table 7: Relative Productivity Levels in the Total Economy,
Canada and the United States, 1961-2009**

Year	Canada					United States		Canada as % of US	
	GDP per worker, current CAD\$	GDP per hour, current CAD\$	GDP PPP exchange rate, US\$/CAD\$	GDP per worker, current US\$	GDP per hour, current US\$	GDP per worker, current US\$	GDP per hour, current US\$	GDP per worker	GDP per hour
	A	B	C	D=A*C	E=B*C	F	G	H=F/D*100	I=G/E*100
1961	6,380	3.11	1.106	7,059	3.44	7,590	4.09	92.99	83.98
1962	6,716	3.27	1.106	7,429	3.62	7,998	4.29	92.89	84.24
1963	7,038	3.45	1.096	7,717	3.79	8,365	4.49	92.25	84.30
1964	7,441	3.67	1.082	8,049	3.97	8,801	4.70	91.45	84.36
1965	7,909	3.93	1.063	8,406	4.18	9,270	4.93	90.68	84.77
1966	8,398	4.20	1.042	8,749	4.38	9,783	5.21	89.43	83.99
1967	8,772	4.41	1.028	9,016	4.53	10,102	5.45	89.25	83.15
1968	9,421	4.82	1.029	9,691	4.96	10,784	5.85	89.86	84.76
1969	10,078	5.20	1.030	10,378	5.35	11,353	6.18	91.42	86.65
1970	10,755	5.60	1.038	11,167	5.82	11,998	6.63	93.07	87.69
1971	11,505	6.04	1.040	11,965	6.28	13,001	7.23	92.03	86.88
1972	12,515	6.61	1.024	12,820	6.77	13,943	7.73	91.95	87.53
1973	14,029	7.43	0.986	13,829	7.33	15,030	8.37	92.01	87.59
1974	16,125	8.58	0.933	15,051	8.01	16,063	9.04	93.70	88.62
1975	17,900	9.63	0.923	16,519	8.89	17,844	10.17	92.57	87.42
1976	20,328	10.99	0.891	18,117	9.80	19,360	11.01	93.58	89.02
1977	22,073	12.06	0.888	19,594	10.71	20,746	11.83	94.45	90.48
1978	23,786	12.97	0.891	21,197	11.56	22,364	12.77	94.78	90.55
1979	26,004	14.24	0.878	22,822	12.50	24,206	13.89	94.28	89.99
1980	28,334	15.77	0.870	24,650	13.72	26,189	15.15	94.12	90.54
1981	31,519	17.55	0.860	27,107	15.10	29,135	16.96	93.04	89.03
1982	34,289	19.34	0.840	28,803	16.25	30,698	17.91	93.83	90.73
1983	36,863	20.89	0.820	30,228	17.13	33,078	19.12	91.38	89.62
1984	39,311	22.22	0.830	32,628	18.44	35,331	20.24	92.35	91.12
1985	41,207	23.18	0.830	34,202	19.24	36,985	21.23	92.47	90.63
1986	42,186	23.75	0.820	34,592	19.47	38,435	22.19	90.00	87.77
1987	44,618	24.99	0.810	36,140	20.25	39,765	22.94	90.89	88.25
1988	47,306	26.42	0.800	37,845	21.14	41,583	23.99	91.01	88.11
1989	49,544	27.81	0.790	39,140	21.97	43,706	25.09	89.55	87.55
1990	50,946	28.72	0.800	40,757	22.98	45,694	26.50	89.19	86.69
1991	52,286	29.83	0.800	41,828	23.87	47,552	27.77	87.96	85.94
1992	53,806	30.72	0.810	43,583	24.88	50,389	29.37	86.49	84.71
1993	55,246	31.52	0.820	45,302	25.85	52,054	30.17	87.03	85.68
1994	57,509	32.66	0.830	47,733	27.11	53,916	31.09	88.53	87.21
1995	59,475	33.82	0.820	48,769	27.74	55,138	31.75	88.45	87.36
1996	60,806	34.46	0.830	50,469	28.60	57,283	33.15	88.10	86.27
1997	62,955	35.62	0.830	52,253	29.57	59,560	34.24	87.73	86.36
1998	63,823	36.13	0.840	53,612	30.35	61,603	35.37	87.03	85.79
1999	66,757	37.74	0.840	56,076	31.70	64,424	36.90	87.04	85.90
2000	71,531	40.46	0.810	57,940	32.78	67,358	38.74	86.02	84.59
2001	72,874	41.36	0.820	59,757	33.91	69,787	40.54	85.63	83.65
2002	73,969	42.40	0.810	59,915	34.35	73,039	42.50	82.03	80.82
2003	76,224	43.96	0.820	62,503	36.04	76,456	44.73	81.75	80.59
2004	79,719	45.49	0.810	64,572	36.85	80,543	47.11	80.17	78.21
2005	83,473	48.02	0.820	68,448	39.37	84,420	49.41	81.08	79.69
2006	86,552	49.80	0.830	71,838	41.33	88,041	51.44	81.60	80.34
2007	89,438	51.47	0.830	74,234	42.72	91,628	53.62	81.02	79.68
2008	92,126	53.28	0.820	75,543	43.69	94,334	55.39	80.08	78.87
2009	89,485	52.62	0.845	75,648	44.48	96,696	57.54	78.23	77.31

Source: Tables 1, 2, 3, 4 and 5. PPP exchange rates from Table 3.

**Table 7a: Relative Productivity Levels in the Business Sector,
Canada and the United States, 1947-2009**

Year	Canada	United States	Canada as % of US	
	GDP per Hour, 2005=100	GDP per Hour, 2005=100	GDP per Hour, 2005=100	GDP per Hour, %
	A	B	C=A/B*100	D=C/ C[1999]*84.2
1947	22.5	23.5	95.6	72.67
1948	23.0	24.6	93.3	70.88
1949	23.4	25.2	92.7	70.47
1950	25.7	27.3	94.2	71.61
1951	27.2	28.1	96.6	73.41
1952	29.1	28.9	100.7	76.50
1953	30.1	30.0	100.6	76.42
1954	29.8	30.6	97.4	74.02
1955	33.1	31.9	103.7	78.81
1956	34.8	31.9	109.0	82.80
1957	34.7	33.0	105.4	80.08
1958	36.6	33.9	108.0	82.08
1959	37.9	35.2	107.7	81.87
1960	39.2	35.8	109.4	83.11
1961	40.3	37.1	108.8	82.70
1962	42.0	38.8	108.3	82.28
1963	43.8	40.3	108.8	82.71
1964	45.6	41.6	109.4	83.15
1965	47.4	43.1	110.0	83.60
1966	48.5	44.9	108.1	82.19
1967	48.9	45.8	106.7	81.06
1968	52.1	47.4	109.9	83.50
1969	53.8	47.7	112.9	85.81
1970	55.8	48.6	114.7	87.18
1971	57.9	50.6	114.5	87.00
1972	60.5	52.2	115.8	88.03
1973	62.7	53.8	116.4	88.49
1974	62.3	52.9	117.7	89.44
1975	62.7	54.8	114.4	86.91
1976	66.5	56.6	117.6	89.36
1977	68.4	57.5	118.9	90.37
1978	68.5	58.1	117.9	89.57
1979	68.4	58.1	117.7	89.42
1980	68.8	58.0	118.6	90.15
1981	70.2	59.2	118.7	90.21
1982	71.4	58.7	121.6	92.41
1983	74.0	60.8	121.7	92.51
1984	76.5	62.4	122.6	93.18
1985	77.4	63.8	121.3	92.15
1986	77.0	65.7	117.2	89.04
1987	77.6	65.9	117.8	89.53
1988	78.2	66.9	117.0	88.90
1989	78.8	67.6	116.7	88.67
1990	78.7	69.0	114.0	86.64
1991	78.9	70.1	112.6	85.60
1992	80.5	73.0	110.3	83.80
1993	81.3	73.4	110.8	84.18
1994	83.6	74.0	113.0	85.85
1995	84.7	74.1	114.3	86.89
1996	84.5	76.2	110.9	84.28
1997	86.7	77.6	111.8	84.94
1998	88.7	79.9	111.1	84.41
1999	91.6	82.7	110.8	84.20
2000	94.8	85.6	110.8	84.22
2001	95.9	88.1	108.8	82.70
2002	97.3	92.1	105.6	80.24
2003	97.4	95.6	101.9	77.44
2004	97.6	98.4	99.2	75.41
2005	100.0	100.0	100.0	75.99
2006	101.1	100.9	100.1	76.09
2007	101.1	102.5	98.6	74.94
2008	100.1	103.6	96.6	73.44
2009	100.5	107.3	93.7	71.21

Source: Table 6. 1999 benchmark for the business sector of Canada's output per hour at 84.2 per cent that of the United States from Statistics Canada (2008) "Relative Multifactor Productivity Levels in Canada and the United States: A Sectoral Analysis," Catalogue no. 15-206-X, no. 019, July, p.32.

Table 8: Main Labour Market Variables, Canada, 1976-2009

	Total Population '000	Working Age Population (15+) '000	Working Age Population (15-64) '000	Labour Force '000	Employment '000	Unemployment '000	Working Age Population (15+) to Total Population Ratio, %	Employment to Working Age Population (15+) Ratio, %	Labour Force Participation Rate, %	Unemployment Rate, %
	A	B	C	D	E	F	G = B / A	H = E / B	I = D / B	J = F / D
1976	23,414.4	17,058.0	15,186.9	10,491.3	9,747.5	743.8	72.85	57.14	61.50	7.09
1977	23,693.9	17,435.5	15,501.8	10,785.2	9,917.1	868.1	73.59	56.88	61.86	8.05
1978	23,935.5	17,778.8	15,786.1	11,154.6	10,220.3	934.3	74.28	57.49	62.74	8.38
1979	24,170.2	18,119.4	16,059.6	11,536.7	10,668.6	868.2	74.97	58.88	63.67	7.53
1980	24,470.7	18,483.5	16,355.8	11,879.4	10,984.0	895.3	75.53	59.43	64.27	7.54
1981	24,784.6	18,814.4	16,622.8	12,235.8	11,305.0	930.8	75.91	60.09	65.03	7.61
1982	25,082.9	19,103.4	16,853.3	12,301.8	10,943.7	1,358.2	76.16	57.29	64.40	11.04
1983	25,336.0	19,355.0	17,052.5	12,527.6	11,022.0	1,505.6	76.39	56.95	64.73	12.02
1984	25,576.7	19,597.9	17,234.8	12,747.9	11,301.7	1,446.2	76.62	57.67	65.05	11.34
1985	25,813.2	19,842.8	17,402.0	13,026.1	11,658.0	1,368.1	76.87	58.75	65.65	10.50
1986	26,067.5	20,093.2	17,570.3	13,282.7	12,008.5	1,274.2	77.08	59.76	66.11	9.59
1987	26,397.9	20,348.1	17,731.8	13,526.0	12,333.0	1,193.0	77.08	60.61	66.47	8.82
1988	26,751.5	20,612.2	17,911.4	13,779.1	12,709.6	1,069.5	77.05	61.66	66.85	7.76
1989	27,214.9	20,898.5	18,109.0	14,057.0	12,996.2	1,060.8	76.79	62.19	67.26	7.55
1990	27,632.4	21,214.7	18,334.5	14,244.6	13,086.4	1,158.3	76.77	61.69	67.14	8.13
1991	27,987.1	21,533.3	18,556.8	14,336.3	12,857.4	1,479.0	76.94	59.71	66.58	10.32
1992	28,324.2	21,820.2	18,772.2	14,336.1	12,730.9	1,605.2	77.04	58.34	65.70	11.20
1993	28,651.5	22,092.9	18,973.3	14,435.0	12,792.7	1,642.3	77.11	57.90	65.34	11.38
1994	28,960.1	22,367.7	19,182.0	14,573.7	13,058.7	1,515.0	77.24	58.38	65.16	10.40
1995	29,263.0	22,660.0	19,405.8	14,689.2	13,295.4	1,393.8	77.44	58.67	64.82	9.49
1996	29,569.9	22,967.1	19,644.4	14,853.5	13,421.4	1,432.2	77.67	58.44	64.67	9.64
1997	29,867.6	23,255.5	19,864.3	15,079.1	13,706.0	1,373.1	77.86	58.94	64.84	9.11
1998	30,123.9	23,522.8	20,068.2	15,316.3	14,046.2	1,270.1	78.09	59.71	65.11	8.29
1999	30,367.1	23,786.9	20,276.2	15,588.3	14,406.7	1,181.6	78.33	60.57	65.53	7.58
2000	30,647.4	24,094.2	20,524.1	15,847.0	14,764.2	1,082.8	78.62	61.28	65.77	6.83
2001	30,970.9	24,444.3	20,810.6	16,109.8	14,946.2	1,163.6	78.93	61.14	65.90	7.22
2002	31,306.2	24,797.3	21,098.3	16,579.3	15,310.4	1,268.9	79.21	61.74	66.86	7.65
2003	31,599.6	25,106.5	21,336.7	16,958.5	15,672.3	1,286.2	79.45	62.42	67.55	7.58
2004	31,900.4	25,443.4	21,599.0	17,182.3	15,947.0	1,235.3	79.76	62.68	67.53	7.19
2005	32,204.7	25,805.5	21,881.6	17,342.6	16,169.7	1,172.8	80.13	62.66	67.21	6.76
2006	32,532.9	26,185.1	22,168.4	17,592.8	16,484.3	1,108.4	80.49	62.95	67.19	6.30
2007	32,882.9	26,553.4	22,432.6	17,945.8	16,866.4	1,079.4	80.75	63.52	67.58	6.01
2008	33,263.1	26,924.7	22,681.5	18,245.1	17,125.8	1,119.3	80.94	63.61	67.76	6.13
2009	33,668.6	27,309.2	22,938.1	18,368.7	16,848.9	1,519.8	81.11	61.70	67.26	8.27
Average annual rates of growth										
81-89	1.18	1.32	1.08	1.75	1.76	1.65	0.14	0.43	0.42	-0.10
89-00	1.09	1.30	1.14	1.10	1.17	0.19	0.21	-0.13	-0.20	-0.90
89-96	1.19	1.36	1.17	0.79	0.46	4.38	0.16	-0.88	-0.56	3.56
96-08	0.99	1.33	1.21	1.73	2.05	-2.03	0.34	0.71	0.39	-3.70
89-08	1.06	1.34	1.19	1.38	1.46	0.28	0.28	0.12	0.04	-1.08
96-00	0.90	1.20	1.10	1.63	2.41	-6.75	0.30	1.19	0.42	-8.25
00-08	1.03	1.40	1.26	1.78	1.87	0.42	0.37	0.47	0.37	-1.34
89-09	1.07	1.35	1.19	1.35	1.31	1.81	0.27	-0.04	0.00	0.46
96-09	1.00	1.34	1.20	1.65	1.76	0.46	0.33	0.42	0.30	-1.17
00-09	1.05	1.40	1.24	1.65	1.48	3.84	0.35	0.08	0.25	2.15

Source: Column A - Table 1; Columns B through F - Statistics Canada, Labour Force Survey, from CANSIM II series v2461077, v2461084, v2461098, v2461119, v2461182. Current as of October 8, 2010.

All data (except for total population) refer to the civilian population aged 15 and over.

Note: Employment data in this table are not consistent with the number of jobs in Table 4 due to different definitions and sources.

For example, the data in Table 4 count multiple jobholders more than once, while employment data in this table count an individual as employed regardless of the number of jobs held. Data in Table 4 are primarily based on the Labour Force Survey data shown here, but are supplemented to account for individuals not covered by the LFS, most notably those working in the territories.

Table 8A: Main Labour Market Variables, Annual Rate of Change, Canada, 1977-2009

	Population	Working Age Population (15+)	Labour Force	Employment	Unemployment	Working Age Population (15+) to Total Population Ratio	Employment to Working Age Population (15+) Ratio	Labour Force Participation Rate	Unemployment Rate (% point change)
	A	B	C	D	E	F	G	H	I
1977	1.19	2.21	2.80	1.74	16.71	1.01	-0.46	0.58	0.96
1978	1.02	1.97	3.43	3.06	7.63	0.94	1.07	1.43	0.33
1979	0.98	1.92	3.43	4.39	-7.07	0.93	2.42	1.48	-0.85
1980	1.24	2.01	2.97	2.96	3.12	0.76	0.93	0.94	0.01
1981	1.28	1.79	3.00	2.92	3.97	0.50	1.11	1.19	0.07
1982	1.20	1.54	0.54	-3.20	45.92	0.33	-4.66	-0.98	3.43
1983	1.01	1.32	1.84	0.72	10.85	0.31	-0.59	0.51	0.98
1984	0.95	1.25	1.76	2.54	-3.95	0.30	1.27	0.50	-0.67
1985	0.92	1.25	2.18	3.15	-5.40	0.32	1.88	0.92	-0.84
1986	0.99	1.26	1.97	3.01	-6.86	0.27	1.72	0.70	-0.91
1987	1.27	1.27	1.83	2.70	-6.37	0.00	1.42	0.56	-0.77
1988	1.34	1.30	1.87	3.05	-10.35	-0.04	1.73	0.57	-1.06
1989	1.73	1.39	2.02	2.25	-0.81	-0.34	0.85	0.62	-0.22
1990	1.53	1.51	1.33	0.69	9.19	-0.02	-0.81	-0.18	0.59
1991	1.28	1.50	0.64	-1.75	27.69	0.22	-3.20	-0.85	2.18
1992	1.20	1.33	0.00	-0.98	8.53	0.13	-2.29	-1.32	0.88
1993	1.16	1.25	0.69	0.49	2.31	0.09	-0.75	-0.55	0.18
1994	1.08	1.24	0.96	2.08	-7.75	0.16	0.83	-0.28	-0.98
1995	1.05	1.31	0.79	1.81	-8.00	0.26	0.50	-0.51	-0.91
1996	1.05	1.36	1.12	0.95	2.76	0.30	-0.40	-0.23	0.15
1997	1.01	1.26	1.52	2.12	-4.13	0.25	0.85	0.26	-0.54
1998	0.86	1.15	1.57	2.48	-7.50	0.29	1.32	0.42	-0.81
1999	0.81	1.12	1.78	2.57	-6.97	0.31	1.43	0.65	-0.71
2000	0.92	1.29	1.66	2.48	-8.36	0.37	1.17	0.36	-0.75
2001	1.06	1.45	1.66	1.23	7.46	0.39	-0.22	0.20	0.39
2002	1.08	1.44	2.91	2.44	9.05	0.36	0.98	1.45	0.43
2003	0.94	1.25	2.29	2.36	1.36	0.31	1.10	1.03	-0.07
2004	0.95	1.34	1.32	1.75	-3.96	0.39	0.41	-0.02	-0.40
2005	0.95	1.42	0.93	1.40	-5.06	0.46	-0.03	-0.48	-0.43
2006	1.02	1.47	1.44	1.95	-5.49	0.45	0.47	-0.03	-0.46
2007	1.08	1.41	2.01	2.32	-2.62	0.33	0.90	0.59	-0.29
2008	1.16	1.40	1.67	1.54	3.70	0.24	0.14	0.27	0.12
2009	1.22	1.43	0.68	-1.62	35.78	0.21	-3.00	-0.74	2.14

Source: Table 8.

Table 9: Main Labour Market Variables, United States, 1976-2009

	Total Population '000	Working Age Population (16+) '000	Working Age Population (16-64) '000	Labour Force '000	Employment '000	Unemployment '000	Working Age Population (16+) to Total Population Ratio, %	Employment to Working Age Population (16+) Ratio, %	Labour Force Participation Rate, %	Unemployment Rate, %
	A	B	C	D	E	F	G = B / A	H = E / B	I = D / B	J = F / D
1976	218,086	156,150	134,067	96,158	88,752	7,406	71.60	56.84	61.58	7.70
1977	220,289	159,033	136,436	99,009	92,017	6,991	72.19	57.86	62.26	7.06
1978	222,629	161,910	138,744	102,251	96,048	6,202	72.73	59.32	63.15	6.07
1979	225,106	164,863	141,096	104,962	98,824	6,137	73.24	59.94	63.67	5.85
1980	227,726	167,745	143,395	106,940	99,303	7,637	73.66	59.20	63.75	7.14
1981	230,008	170,130	145,280	108,670	100,397	8,273	73.97	59.01	63.87	7.61
1982	232,218	172,271	146,884	110,204	99,526	10,678	74.19	57.77	63.97	9.69
1983	234,333	174,215	148,323	111,550	100,834	10,717	74.35	57.88	64.03	9.61
1984	236,394	176,383	149,950	113,544	105,005	8,539	74.61	59.53	64.37	7.52
1985	238,506	178,206	151,209	115,461	107,150	8,312	74.72	60.13	64.79	7.20
1986	240,683	180,587	153,090	117,834	109,597	8,237	75.03	60.69	65.25	6.99
1987	242,843	182,753	154,645	119,865	112,440	7,425	75.26	61.53	65.59	6.19
1988	245,061	184,613	156,001	121,669	114,968	6,701	75.33	62.28	65.90	5.51
1989	247,387	186,393	157,220	123,869	117,342	6,528	75.34	62.95	66.46	5.27
1990	250,181	189,164	159,917	125,840	118,793	7,047	75.61	62.80	66.52	5.60
1991	253,530	190,925	161,225	126,346	117,718	8,628	75.31	61.66	66.18	6.83
1992	256,922	192,805	162,626	128,105	118,492	9,613	75.04	61.46	66.44	7.50
1993	260,282	194,838	164,204	129,200	120,259	8,940	74.86	61.72	66.31	6.92
1994	263,455	196,814	165,802	131,056	123,060	7,996	74.70	62.53	66.59	6.10
1995	266,588	198,584	167,136	132,304	124,900	7,404	74.49	62.90	66.62	5.60
1996	269,714	200,591	168,840	133,943	126,708	7,236	74.37	63.17	66.77	5.40
1997	272,958	203,133	171,144	136,297	129,558	6,739	74.42	63.78	67.10	4.94
1998	276,154	205,220	172,983	137,673	131,463	6,210	74.31	64.06	67.09	4.51
1999	279,328	207,753	175,269	139,368	133,488	5,880	74.38	64.25	67.08	4.22
2000	282,418	212,577	179,111	142,583	136,891	5,692	75.27	64.40	67.07	3.99
2001	285,335	215,092	181,420	143,734	136,933	6,801	75.38	63.66	66.82	4.73
2002	288,133	217,570	183,762	144,863	136,485	8,378	75.51	62.73	66.58	5.78
2003	290,845	221,168	186,915	146,510	137,736	8,774	76.04	62.28	66.24	5.99
2004	293,502	223,357	188,748	147,401	139,252	8,149	76.10	62.35	65.99	5.53
2005	296,229	226,082	191,014	149,320	141,730	7,591	76.32	62.69	66.05	5.08
2006	299,052	228,815	193,202	151,428	144,427	7,001	76.51	63.12	66.18	4.62
2007	302,025	231,867	195,639	153,124	146,047	7,078	76.77	62.99	66.04	4.62
2008	304,831	233,788	196,627	154,287	145,362	8,924	76.69	62.18	65.99	5.78
2009	307,483	235,801	197,803	154,142	139,877	14,265	76.69	59.32	65.37	9.25
Average annual rates of growth										
81-89	0.91	1.15	0.99	1.65	1.97	-2.92	0.23	0.81	0.50	-4.49
89-00	1.21	1.20	1.19	1.29	1.41	-1.24	-0.01	0.21	0.08	-2.49
89-96	1.24	1.05	1.02	1.12	1.10	1.48	-0.19	0.05	0.07	0.35
96-08	1.03	1.28	1.28	1.19	1.15	1.76	0.26	-0.13	-0.10	0.57
89-08	1.11	1.20	1.18	1.16	1.13	1.66	0.09	-0.07	-0.04	0.49
96-00	1.16	1.46	1.49	1.58	1.95	-5.82	0.30	0.48	0.11	-7.28
00-08	0.96	1.20	1.17	0.99	0.75	5.78	0.23	-0.44	-0.20	4.74
89-09	1.09	1.18	1.15	1.10	0.88	3.99	0.09	-0.30	-0.08	2.86
96-09	1.01	1.25	1.23	1.09	0.76	5.36	0.24	-0.48	-0.16	4.23
00-09	0.95	1.16	1.11	0.87	0.24	10.75	0.21	-0.91	-0.29	9.79

Source: Column A - Table 2; Columns B-F are from BLS, Current Population Survey series LNU00000000, LNU00000097, LNU01000000, LNU02000000, LNU03000000 (Column C subtracts LNU00000097 from LNU00000000). Current as of October 8, 2010.

All data (except for total population) refer to the civilian population aged 16 and over.

Note: Employment data in this table are not consistent with the number of jobs in Table 5 due to different definitions and sources.

The data in Table 5 count multiple jobholders more than once, while employment data in this table count an individual as employed regardless of the number of jobs held. Data in Table 5 are primarily based on the Current Employment Statistics establishment survey, but are supplemented to account for individuals not covered by the CES with data from the household-based Current Population Survey shown here, most notably the self-employed and agricultural, public administration and managerial workers.

For columns B through F, there are breaks in the series in 2000 and 2003, due to the implementation of new population benchmarks.

Table 9A: Main Labour Market Variables, Annual Rate of Change, United States, 1977-2009

	Population	Working Age Population (16+)	Labour Force	Employment	Unemployment	Working Age Population (16+) to Total Population Ratio	Employment to Working Age Population (16+) Ratio	Labour Force Participation Rate	Unemployment Rate (% point change)
	A	B	C	D	E	F	G	H	I
1977	1.01	1.85	2.96	3.68	-5.60	0.83	1.80	1.10	-0.64
1978	1.06	1.81	3.27	4.38	-11.29	0.74	2.53	1.44	-1.00
1979	1.11	1.82	2.65	2.89	-1.05	0.70	1.05	0.81	-0.22
1980	1.16	1.75	1.88	0.48	24.44	0.58	-1.24	0.13	1.29
1981	1.00	1.42	1.62	1.10	8.33	0.42	-0.32	0.19	0.47
1982	0.96	1.26	1.41	-0.87	29.07	0.29	-2.10	0.15	2.08
1983	0.91	1.13	1.22	1.31	0.37	0.22	0.18	0.09	-0.08
1984	0.88	1.24	1.79	4.14	-20.32	0.36	2.86	0.54	-2.09
1985	0.89	1.03	1.69	2.04	-2.66	0.14	1.00	0.65	-0.32
1986	0.91	1.34	2.06	2.28	-0.90	0.42	0.94	0.71	-0.21
1987	0.90	1.20	1.72	2.59	-9.86	0.30	1.38	0.52	-0.80
1988	0.91	1.02	1.51	2.25	-9.75	0.10	1.22	0.48	-0.69
1989	0.95	0.96	1.81	2.06	-2.58	0.01	1.09	0.84	-0.24
1990	1.13	1.49	1.59	1.24	7.95	0.35	-0.25	0.10	0.33
1991	1.34	0.93	0.40	-0.90	22.44	-0.40	-1.82	-0.52	1.23
1992	1.34	0.98	1.39	0.66	11.42	-0.35	-0.32	0.40	0.68
1993	1.31	1.05	0.85	1.49	-7.00	-0.25	0.43	-0.20	-0.58
1994	1.22	1.01	1.44	2.33	-10.56	-0.20	1.30	0.42	-0.82
1995	1.19	0.90	0.95	1.50	-7.40	-0.29	0.59	0.05	-0.51
1996	1.17	1.01	1.24	1.45	-2.27	-0.16	0.43	0.23	-0.19
1997	1.20	1.27	1.76	2.25	-6.87	0.06	0.97	0.48	-0.46
1998	1.17	1.03	1.01	1.47	-7.85	-0.14	0.44	-0.02	-0.43
1999	1.15	1.23	1.23	1.54	-5.31	0.08	0.30	0.00	-0.29
2000	1.11	2.32	2.31	2.55	-3.20	1.20	0.22	-0.01	-0.23
2001	1.03	1.18	0.81	0.03	19.48	0.15	-1.14	-0.37	0.74
2002	0.98	1.15	0.79	-0.33	23.19	0.17	-1.46	-0.36	1.05
2003	0.94	1.65	1.14	0.92	4.73	0.71	-0.73	-0.51	0.21
2004	0.91	0.99	0.61	1.10	-7.12	0.08	0.11	-0.38	-0.46
2005	0.93	1.22	1.30	1.78	-6.85	0.29	0.55	0.08	-0.44
2006	0.95	1.21	1.41	1.90	-7.77	0.25	0.69	0.20	-0.46
2007	0.99	1.33	1.12	1.12	1.10	0.34	-0.21	-0.21	0.00
2008	0.93	0.83	0.76	-0.47	26.08	-0.10	-1.29	-0.07	1.16
2009	0.87	0.86	-0.09	-3.77	59.85	-0.01	-4.59	-0.95	3.47

Source: Table 9.

Note: Working Age Population, Labour Force, Employment and Unemployment growth rates in 2000 and 2003 are affected by new population benchmarks and are not strictly comparable with growth rates for other years.

Table 10: GDP per Capita Decomposition into Productivity and Labour**Market Components, Canada, 1976-2009**

	GDP / Population 2002 \$	GDP / Employment 2002 \$	Employment / Population %	WAP/ Population %	Employment / WAP %	Labour Force / WAP %	Unemployment / WAP %
	A=(B*C)/100	B	C=(D*E)/100	D	E=F-G	F	G
1976	23,419	56,255	41.63	72.85	57.14	61.50	4.36
1977	23,943	57,205	41.86	73.59	56.88	61.86	4.98
1978	24,639	57,702	42.70	74.28	57.49	62.74	5.26
1979	25,328	57,381	44.14	74.97	58.88	63.67	4.79
1980	25,558	56,939	44.89	75.53	59.43	64.27	4.84
1981	26,118	57,260	45.61	75.91	60.09	65.03	4.95
1982	25,069	57,459	43.63	76.16	57.29	64.40	7.11
1983	25,494	58,602	43.50	76.39	56.95	64.73	7.78
1984	26,722	60,474	44.19	76.62	57.67	65.05	7.38
1985	27,743	61,428	45.16	76.87	58.75	65.65	6.89
1986	28,137	61,079	46.07	77.08	59.76	66.11	6.34
1987	28,967	62,001	46.72	77.08	60.61	66.47	5.86
1988	30,006	63,157	47.51	77.05	61.66	66.85	5.19
1989	30,268	63,382	47.75	76.79	62.19	67.26	5.08
1990	29,868	63,067	47.36	76.77	61.69	67.14	5.46
1991	28,872	62,847	45.94	76.94	59.71	66.58	6.87
1992	28,778	64,027	44.95	77.04	58.34	65.70	7.36
1993	29,115	65,208	44.65	77.11	57.90	65.34	7.43
1994	30,189	66,949	45.09	77.24	58.38	65.16	6.77
1995	30,715	67,603	45.43	77.44	58.67	64.82	6.15
1996	30,888	68,053	45.39	77.67	58.44	64.67	6.24
1997	31,873	69,456	45.89	77.86	58.94	64.84	5.90
1998	32,896	70,551	46.63	78.09	59.71	65.11	5.40
1999	34,438	72,590	47.44	78.33	60.57	65.53	4.97
2000	35,909	74,539	48.17	78.62	61.28	65.77	4.49
2001	36,168	74,945	48.26	78.93	61.14	65.90	4.76
2002	36,827	75,302	48.91	79.21	61.74	66.86	5.12
2003	37,171	74,947	49.60	79.45	62.42	67.55	5.12
2004	37,969	75,954	49.99	79.76	62.68	67.53	4.86
2005	38,746	77,169	50.21	80.13	62.66	67.21	4.54
2006	39,438	77,834	50.67	80.49	62.95	67.19	4.23
2007	39,877	77,744	51.29	80.75	63.52	67.58	4.07
2008	39,625	76,963	51.49	80.94	63.61	67.76	4.16
2009	38,184	76,302	50.04	81.11	61.70	67.26	5.57
Average annual rates of growth							
81-89	1.86	1.28	0.57	0.14	0.43	0.42	0.32
89-00	1.57	1.48	0.08	0.21	-0.13	-0.20	-1.10
89-96	0.29	1.02	-0.72	0.16	-0.88	-0.56	2.98
96-08	2.10	1.03	1.06	0.34	0.71	0.39	-3.32
89-08	1.43	1.03	0.40	0.28	0.12	0.04	-1.05
96-00	3.84	2.30	1.50	0.30	1.19	0.42	-7.86
00-08	1.24	0.40	0.83	0.37	0.47	0.37	-0.97
89-09	1.17	0.93	0.23	0.27	-0.04	0.00	0.46
96-09	1.64	0.88	0.75	0.33	0.42	0.30	-0.87
00-09	0.68	0.26	0.42	0.35	0.08	0.25	2.40

Source: Tables 1 and 8.

1. (GDP / Population) = (GDP / Employment) * (Employment / Population)

2. (Employment / Population) = (WAP / Population) * (Employment / WAP)

3. (Employment / WAP) = (Labour Force / WAP) - (Unemployment / WAP)

All data (except for population) refer to population aged 15 and over.

GDP per worker data in this table do not correspond to the GDP per job data in Table 4 due to a different definition and source for employment. See the notes to Tables 4 and 8.

Table 10A: GDP per Capita Decomposition into Productivity and Labour Market Components, Canada, Annual Rate of Change, 1977-2009

	GDP / Population 2002 \$	GDP / Employment 2002 \$	Employment / Population %	WAP/ Population %	Employment / WAP %	Labour Force / WAP %	Unemployment / WAP %
	A=B+C	B	C=D+E	D	E	F	G
1977	2.24	1.69	0.54	1.01	-0.46	0.58	14.18
1978	2.90	0.87	2.02	0.94	1.07	1.43	5.55
1979	2.80	-0.56	3.37	0.93	2.42	1.48	-8.82
1980	0.91	-0.77	1.69	0.76	0.93	0.94	1.09
1981	2.19	0.56	1.62	0.50	1.11	1.19	2.14
1982	-4.01	0.35	-4.35	0.33	-4.66	-0.98	43.71
1983	1.69	1.99	-0.29	0.31	-0.59	0.51	9.41
1984	4.82	3.20	1.57	0.30	1.27	0.50	-5.14
1985	3.82	1.58	2.21	0.32	1.88	0.92	-6.57
1986	1.42	-0.57	2.00	0.27	1.72	0.70	-8.02
1987	2.95	1.51	1.42	0.00	1.42	0.56	-7.55
1988	3.59	1.86	1.69	-0.04	1.73	0.57	-11.50
1989	0.87	0.36	0.51	-0.34	0.85	0.62	-2.17
1990	-1.32	-0.50	-0.83	-0.02	-0.81	-0.18	7.56
1991	-3.33	-0.35	-3.00	0.22	-3.20	-0.85	25.80
1992	-0.33	1.88	-2.16	0.13	-2.29	-1.32	7.11
1993	1.17	1.84	-0.66	0.09	-0.75	-0.55	1.05
1994	3.69	2.67	0.99	0.16	0.83	-0.28	-8.88
1995	1.74	0.98	0.76	0.26	0.50	-0.51	-9.19
1996	0.56	0.66	-0.10	0.30	-0.40	-0.23	1.38
1997	3.19	2.06	1.10	0.25	0.85	0.26	-5.32
1998	3.21	1.58	1.61	0.29	1.32	0.42	-8.55
1999	4.69	2.89	1.75	0.31	1.43	0.65	-8.00
2000	4.27	2.69	1.54	0.37	1.17	0.36	-9.53
2001	0.72	0.54	0.18	0.39	-0.22	0.20	5.92
2002	1.82	0.48	1.34	0.36	0.98	1.45	7.50
2003	0.94	-0.47	1.41	0.31	1.10	1.03	0.12
2004	2.15	1.34	0.79	0.39	0.41	-0.02	-5.23
2005	2.05	1.60	0.44	0.46	-0.03	-0.48	-6.39
2006	1.79	0.86	0.92	0.45	0.47	-0.03	-6.86
2007	1.11	-0.12	1.23	0.33	0.90	0.59	-3.97
2008	-0.63	-1.00	0.38	0.24	0.14	0.27	2.27
2009	-3.64	-0.86	-2.80	0.21	-3.00	-0.74	33.87

Source: Table 10

Table 11: GDP per Capita Decomposition into Productivity and Labour, Market Components, United States, 1976-2009

	GDP / Population 2005 \$	GDP / Employment 2005 \$	Employment / Population %	WAP/ Population %	Employment / WAP %	Labour Force / WAP %	Unemployment / WAP %
	A=(B*C)/100	B	C=(D*E)/100	D	E=F-G	F	G
1976	23,575	57,929	40.70	71.60	56.84	61.58	4.74
1977	24,412	58,442	41.77	72.19	57.86	62.26	4.40
1978	25,503	59,112	43.14	72.73	59.32	63.15	3.83
1979	26,010	59,247	43.90	73.24	59.94	63.67	3.72
1980	25,640	58,800	43.61	73.66	59.20	63.75	4.55
1981	26,030	59,635	43.65	73.97	59.01	63.87	4.86
1982	25,282	58,989	42.86	74.19	57.77	63.97	6.20
1983	26,186	60,854	43.03	74.35	57.88	64.03	6.15
1984	27,823	62,636	44.42	74.61	59.53	64.37	4.84
1985	28,718	63,923	44.93	74.72	60.13	64.79	4.66
1986	29,443	64,660	45.54	75.03	60.69	65.25	4.56
1987	30,115	65,042	46.30	75.26	61.53	65.59	4.06
1988	31,069	66,226	46.91	75.33	62.28	65.90	3.63
1989	31,877	67,204	47.43	75.34	62.95	66.46	3.50
1990	32,112	67,629	47.48	75.61	62.80	66.52	3.73
1991	31,614	68,087	46.43	75.31	61.66	66.18	4.52
1992	32,255	69,938	46.12	75.04	61.46	66.44	4.99
1993	32,747	70,875	46.20	74.86	61.72	66.31	4.59
1994	33,671	72,084	46.71	74.70	62.53	66.59	4.06
1995	34,111	72,808	46.85	74.49	62.90	66.62	3.73
1996	34,977	74,454	46.98	74.37	63.17	66.77	3.61
1997	36,102	76,061	47.46	74.42	63.78	67.10	3.32
1998	37,238	78,224	47.60	74.31	64.06	67.09	3.03
1999	38,592	80,755	47.79	74.38	64.25	67.08	2.83
2000	39,750	82,007	48.47	75.27	64.40	67.07	2.68
2001	39,768	82,867	47.99	75.38	63.66	66.82	3.16
2002	40,096	84,647	47.37	75.51	62.73	66.58	3.85
2003	40,711	85,967	47.36	76.04	62.28	66.24	3.97
2004	41,784	88,069	47.44	76.10	62.35	65.99	3.65
2005	42,664	89,172	47.84	76.32	62.69	66.05	3.36
2006	43,391	89,846	48.29	76.51	63.12	66.18	3.06
2007	43,801	90,580	48.36	76.77	62.99	66.04	3.05
2008	43,397	91,006	47.69	76.69	62.18	65.99	3.82
2009	41,890	92,085	45.49	76.69	59.32	65.37	6.05
Average annual rates of growth							
81-89	2.57	1.50	1.04	0.23	0.81	0.50	-4.02
89-00	2.03	1.83	0.20	-0.01	0.21	0.08	-2.41
89-96	1.33	1.47	-0.14	-0.19	0.05	0.07	0.42
96-08	1.81	1.69	0.12	0.26	-0.13	-0.10	0.47
89-08	1.64	1.61	0.03	0.09	-0.07	-0.04	0.45
96-00	3.25	2.44	0.78	0.30	0.48	0.11	-7.18
00-08	1.10	1.31	-0.20	0.23	-0.44	-0.20	4.53
89-09	1.38	1.59	-0.21	0.09	-0.30	-0.08	2.77
96-09	1.40	1.65	-0.25	0.24	-0.48	-0.16	4.06
00-09	0.58	1.30	-0.70	0.21	-0.91	-0.29	9.48

Source: Tables 2 and 9.

1. (GDP / Population) = (GDP / Employment) * (Employment / Population)

2. (Employment / Population) = (WAP / Population) * (Employment / WAP)

3. (Employment / WAP) = (Labour Force / WAP) - (Unemployment / WAP)

All data (except for population) refer to the civilian population aged 16 and over.

GDP per worker data in this table do not correspond to the GDP per job data in Table 5 due to a different definition and source for employment. See the notes to Tables 5 and 9.

Growth rates of columns B and D are affected by breaks in the employment and working age population series in 2000 and 2003. See Table 9.

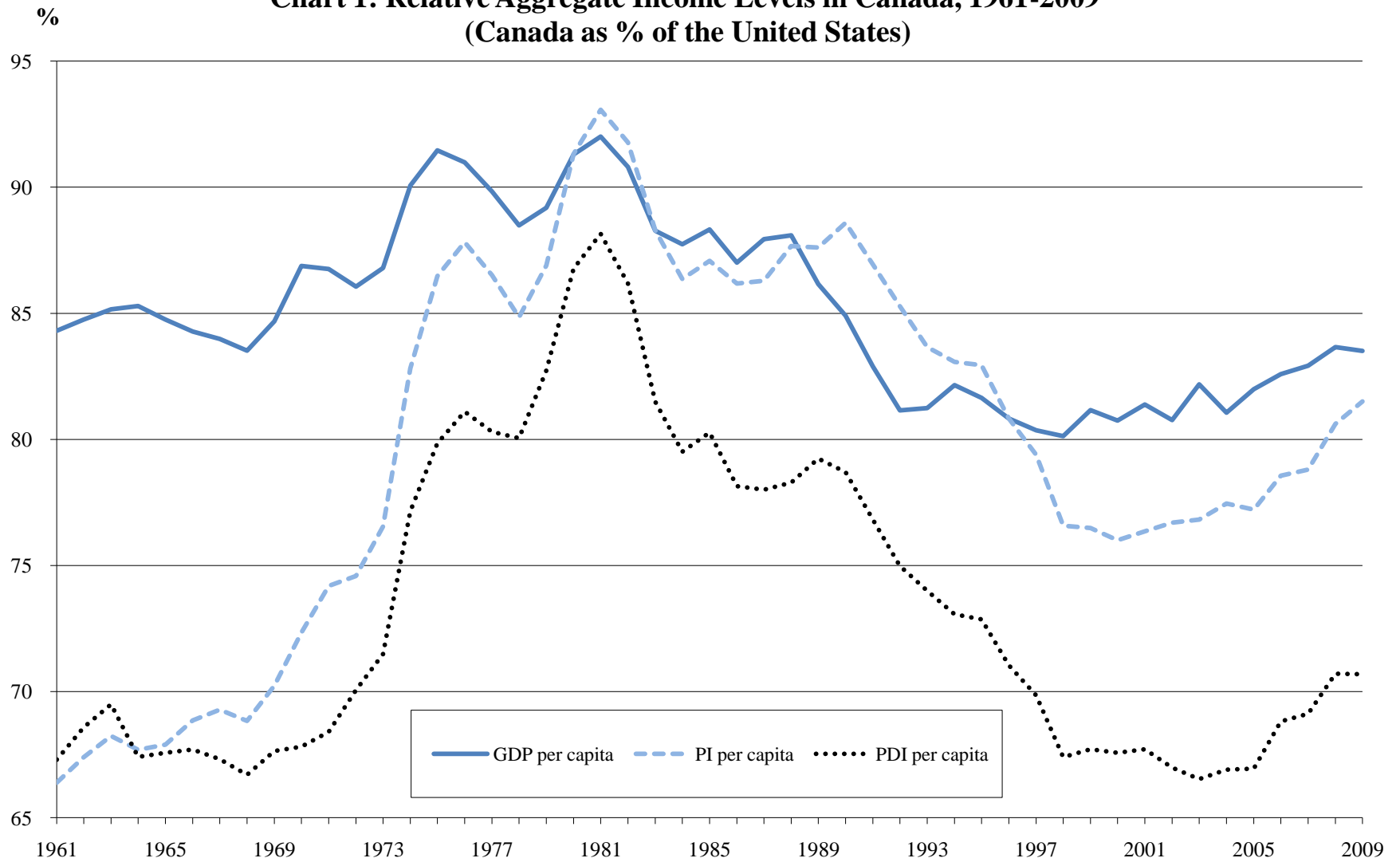
**Table 11A: GDP per Capita Decomposition into Productivity and Labour,
Market Components, United States, Annual Rate of Change, 1977-2009**

	GDP / Population 2005 \$	GDP / Employment 2005\$	Employment / Population %	WAP / Population %	Employment / WAP %	Labour Force / WAP %	Unemployment / WAP %
	A=B+C	B	C=D+E	D	E	F	G
1977	3.55	0.89	2.64	0.83	1.80	1.10	-7.31
1978	4.47	1.15	3.28	0.74	2.53	1.44	-12.86
1979	1.99	0.23	1.76	0.70	1.05	0.81	-2.82
1980	-1.42	-0.75	-0.67	0.58	-1.24	0.13	22.30
1981	1.52	1.42	0.10	0.42	-0.32	0.19	6.81
1982	-2.88	-1.08	-1.81	0.29	-2.10	0.15	27.47
1983	3.58	3.16	0.40	0.22	0.18	0.09	-0.75
1984	6.25	2.93	3.23	0.36	2.86	0.54	-21.30
1985	3.22	2.05	1.14	0.14	1.00	0.65	-3.65
1986	2.53	1.15	1.36	0.42	0.94	0.71	-2.21
1987	2.28	0.59	1.68	0.30	1.38	0.52	-10.93
1988	3.17	1.82	1.32	0.10	1.22	0.48	-10.66
1989	2.60	1.48	1.11	0.01	1.09	0.84	-3.51
1990	0.74	0.63	0.11	0.35	-0.25	0.10	6.37
1991	-1.55	0.68	-2.21	-0.40	-1.82	-0.52	21.31
1992	2.03	2.72	-0.67	-0.35	-0.32	0.40	10.33
1993	1.52	1.34	0.18	-0.25	0.43	-0.20	-7.97
1994	2.82	1.71	1.10	-0.20	1.30	0.42	-11.46
1995	1.31	1.00	0.30	-0.29	0.59	0.05	-8.23
1996	2.54	2.26	0.27	-0.16	0.43	0.23	-3.25
1997	3.21	2.16	1.03	0.06	0.97	0.48	-8.03
1998	3.15	2.84	0.30	-0.14	0.44	-0.02	-8.79
1999	3.64	3.24	0.39	0.08	0.30	0.00	-6.47
2000	3.00	1.55	1.43	1.20	0.22	-0.01	-5.39
2001	0.05	1.05	-0.99	0.15	-1.14	-0.37	18.09
2002	0.82	2.15	-1.30	0.17	-1.46	-0.36	21.78
2003	1.53	1.56	-0.02	0.71	-0.73	-0.51	3.02
2004	2.64	2.45	0.19	0.08	0.11	-0.38	-8.03
2005	2.11	1.25	0.84	0.29	0.55	0.08	-7.97
2006	1.70	0.76	0.94	0.25	0.69	0.20	-8.87
2007	0.94	0.82	0.13	0.34	-0.21	-0.21	-0.23
2008	-0.92	0.47	-1.39	-0.10	-1.29	-0.07	25.04
2009	-3.47	1.19	-4.60	-0.01	-4.59	-0.95	58.49

Source: Table 11.

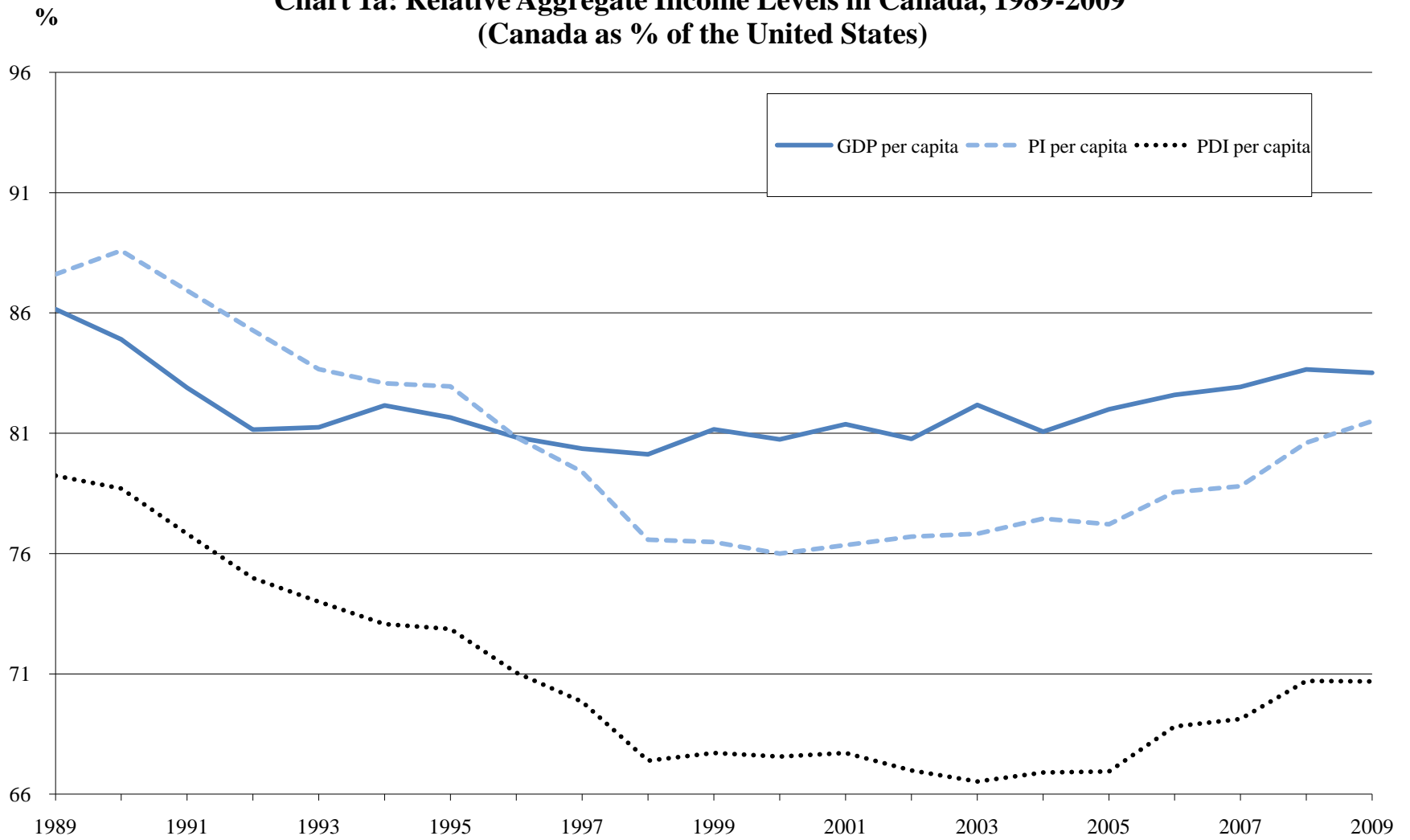
Note: Growth rates of columns B and D are affected by breaks in the employment and working age population series in 2000 and 2003. See Table 9.

Chart 1: Relative Aggregate Income Levels in Canada, 1961-2009
(Canada as % of the United States)



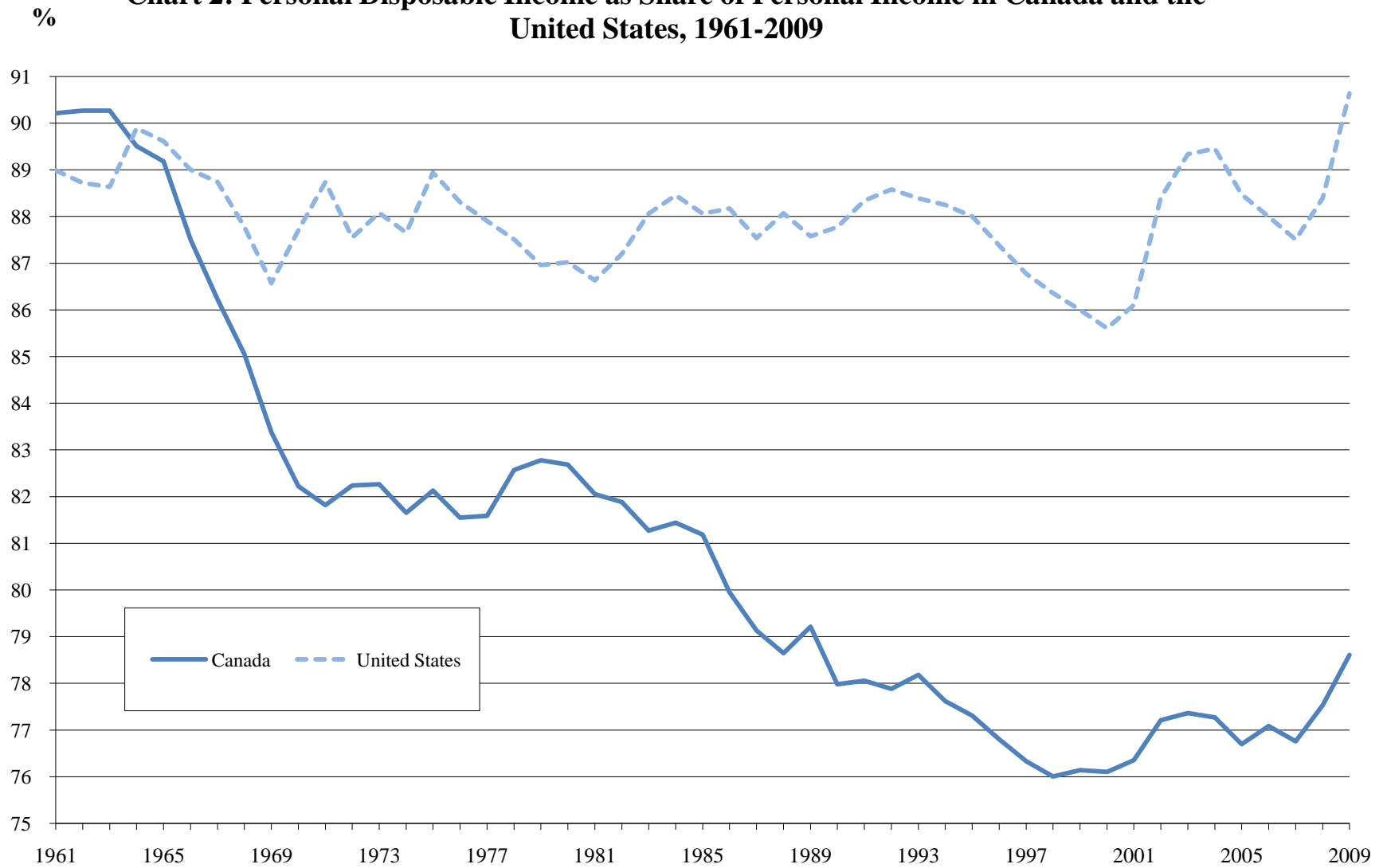
Source: Table 3.

Chart 1a: Relative Aggregate Income Levels in Canada, 1989-2009
(Canada as % of the United States)



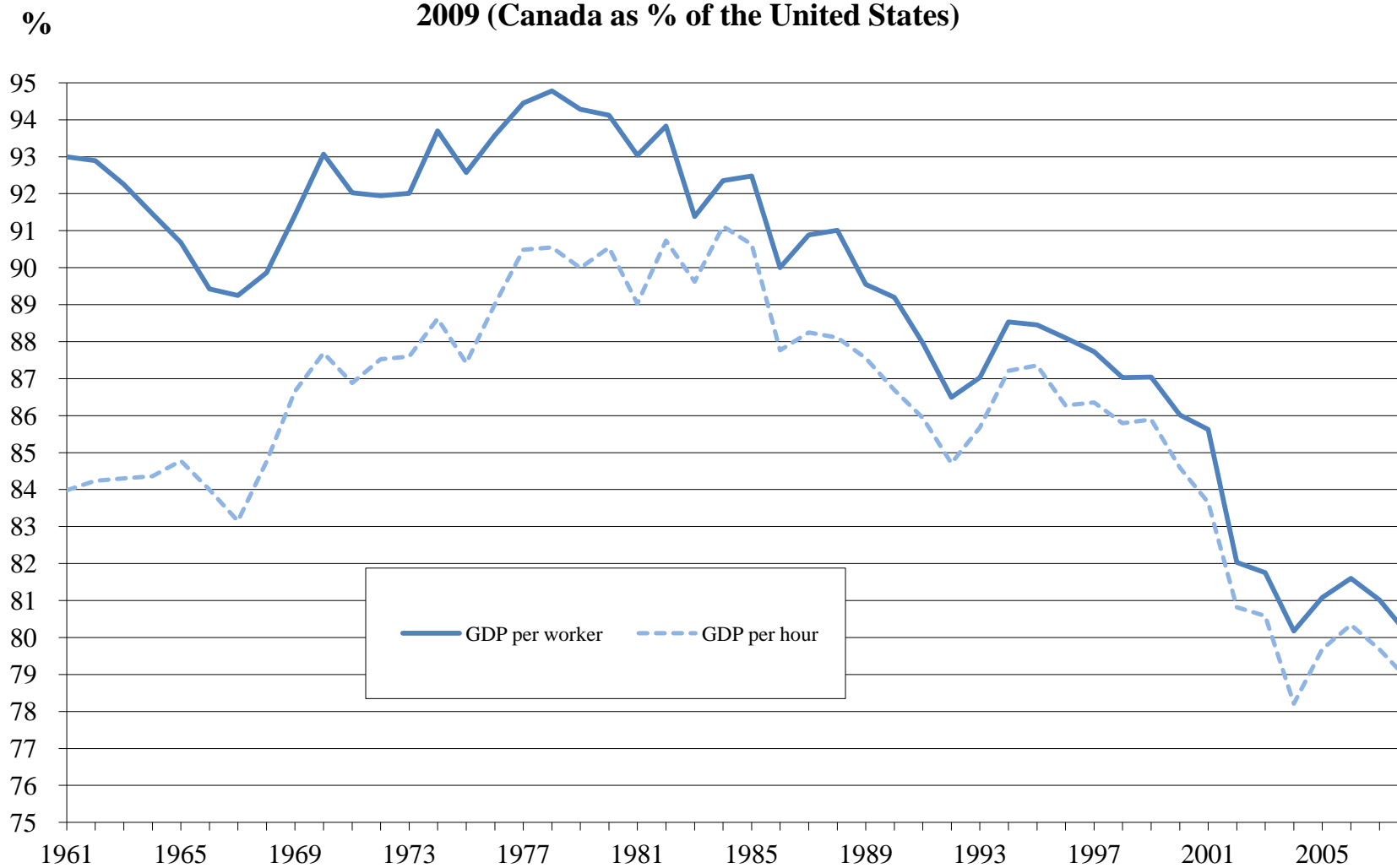
Source: Table 3.

Chart 2: Personal Disposable Income as Share of Personal Income in Canada and the United States, 1961-2009



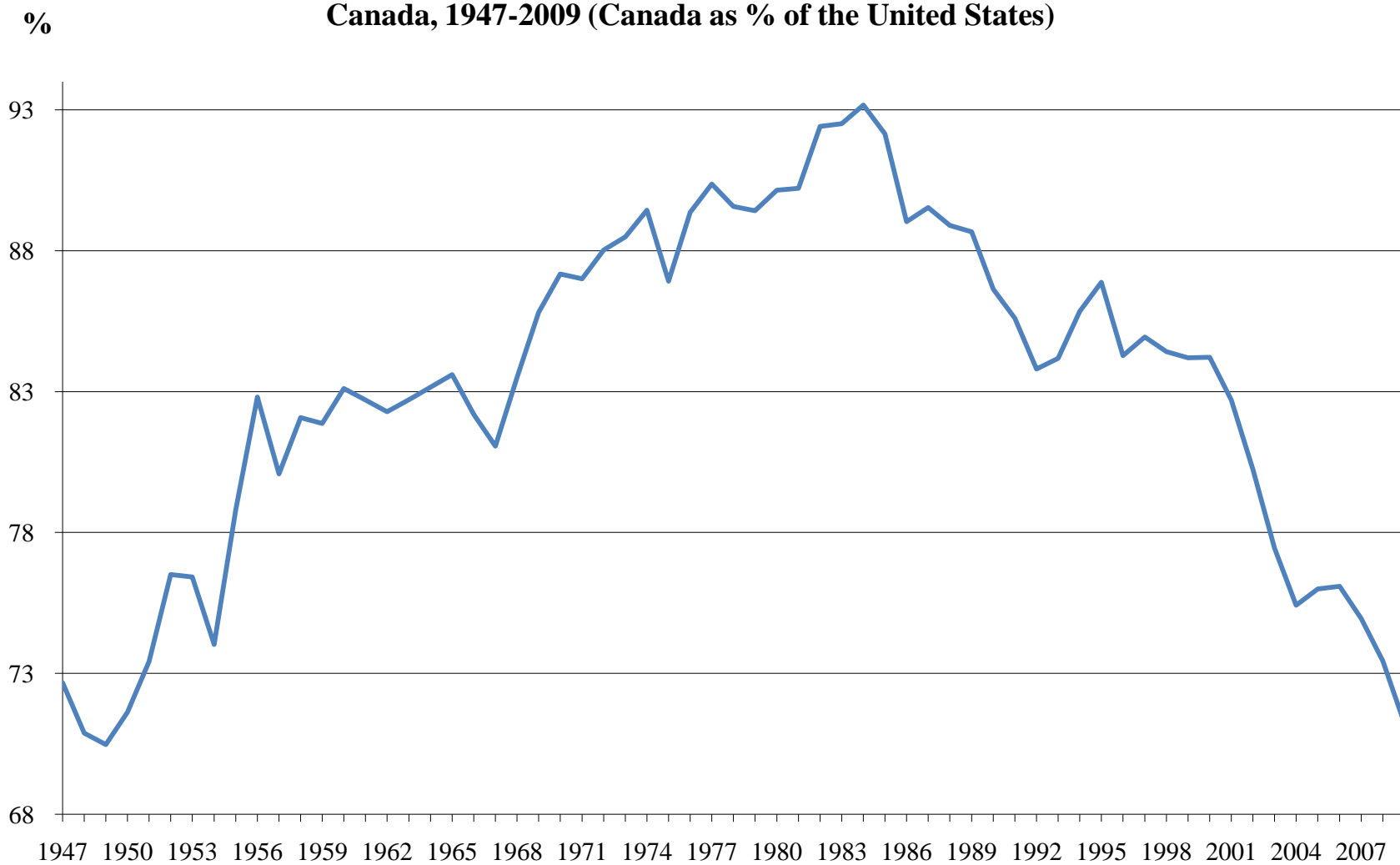
Source: Table 3.

Chart 3: Relative Labour Productivity Levels in the Total Economy in Canada, 1961-2009 (Canada as % of the United States)



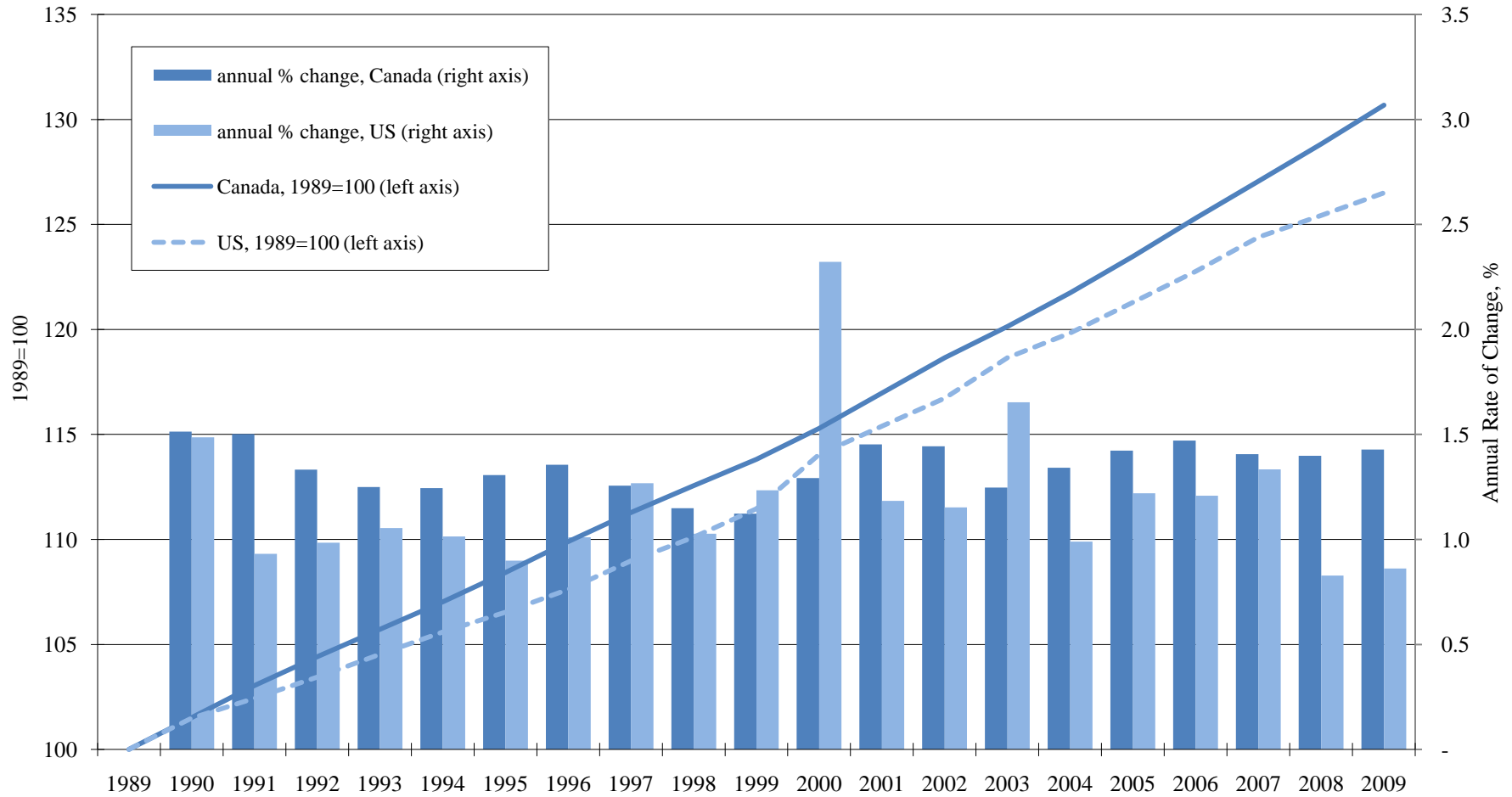
Source: Table 7.

Chart 3a: Relative Labour Productivity Levels (GDP per hour) in the Business Sector in Canada, 1947-2009 (Canada as % of the United States)



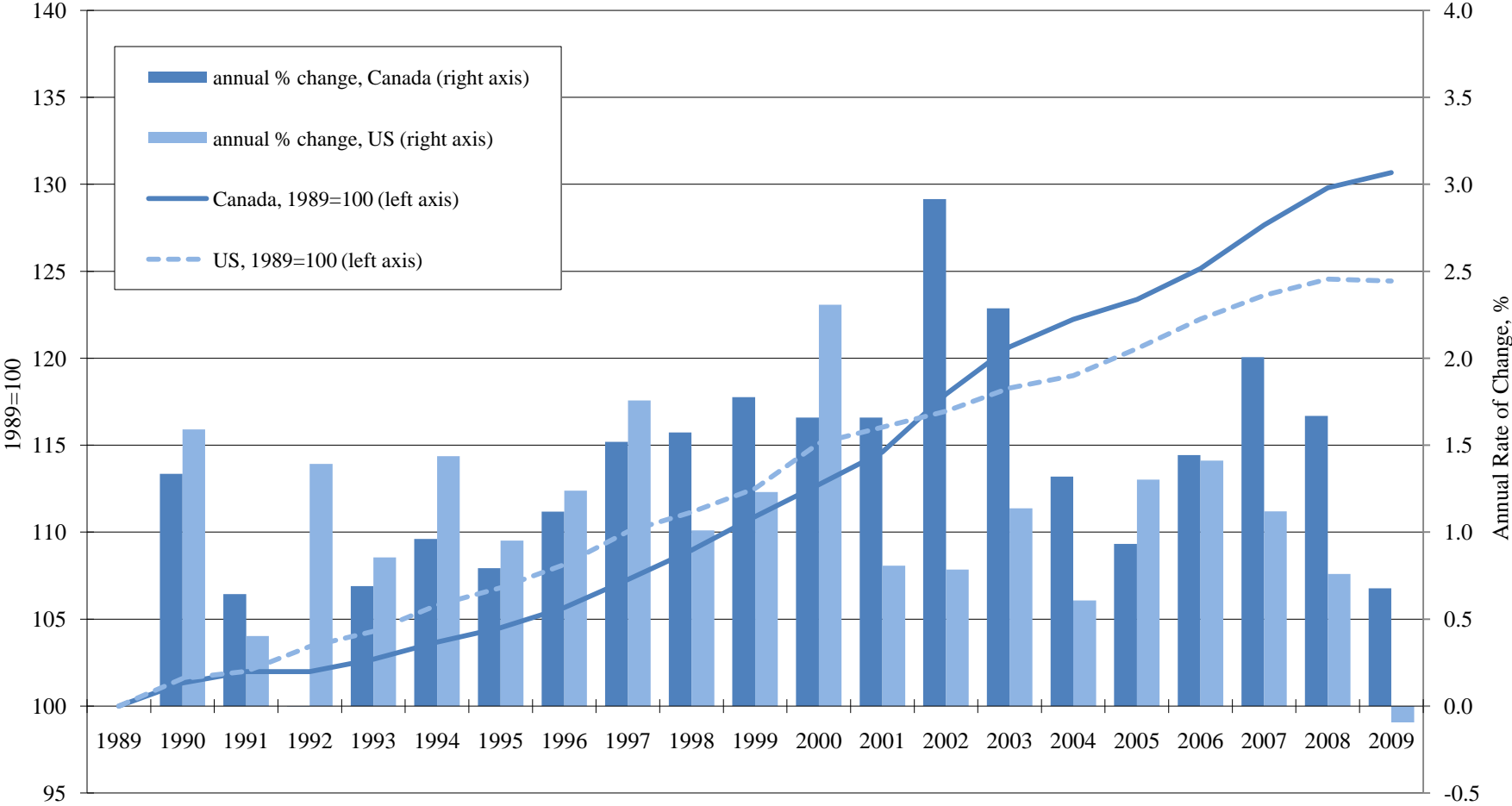
Source: Table 7a.

Chart 4: Working Age Population in Canada and the United States, 1989-2009



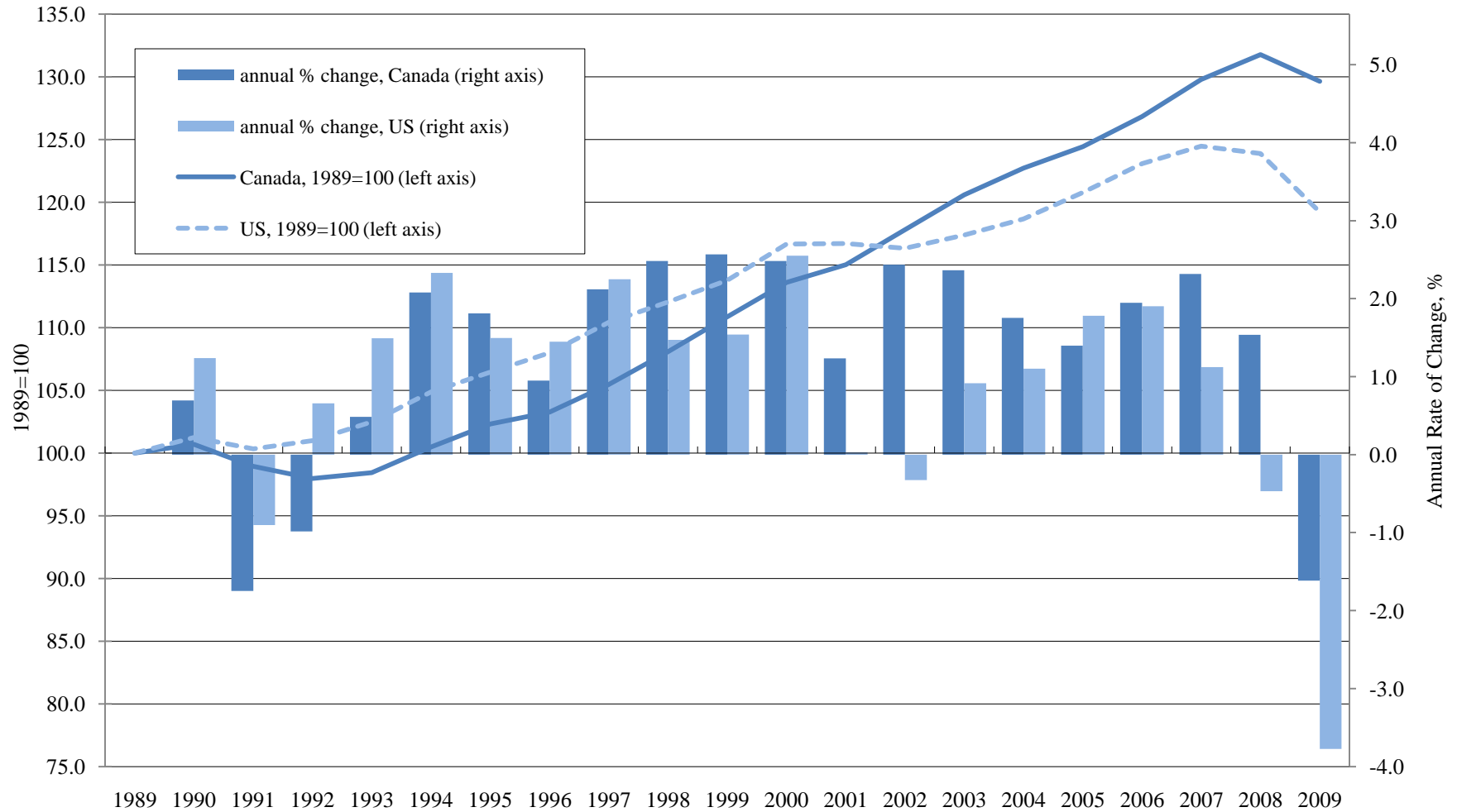
All labour market data (except for population) refer to population aged 15 and over in Canada and 16 and over in the United States. U.S. data in 2000 and 2003 are affected by new population benchmarks. Source: Tables 8 and 9.

Chart 5: Labour Force in Canada and the United States, 1989-2009



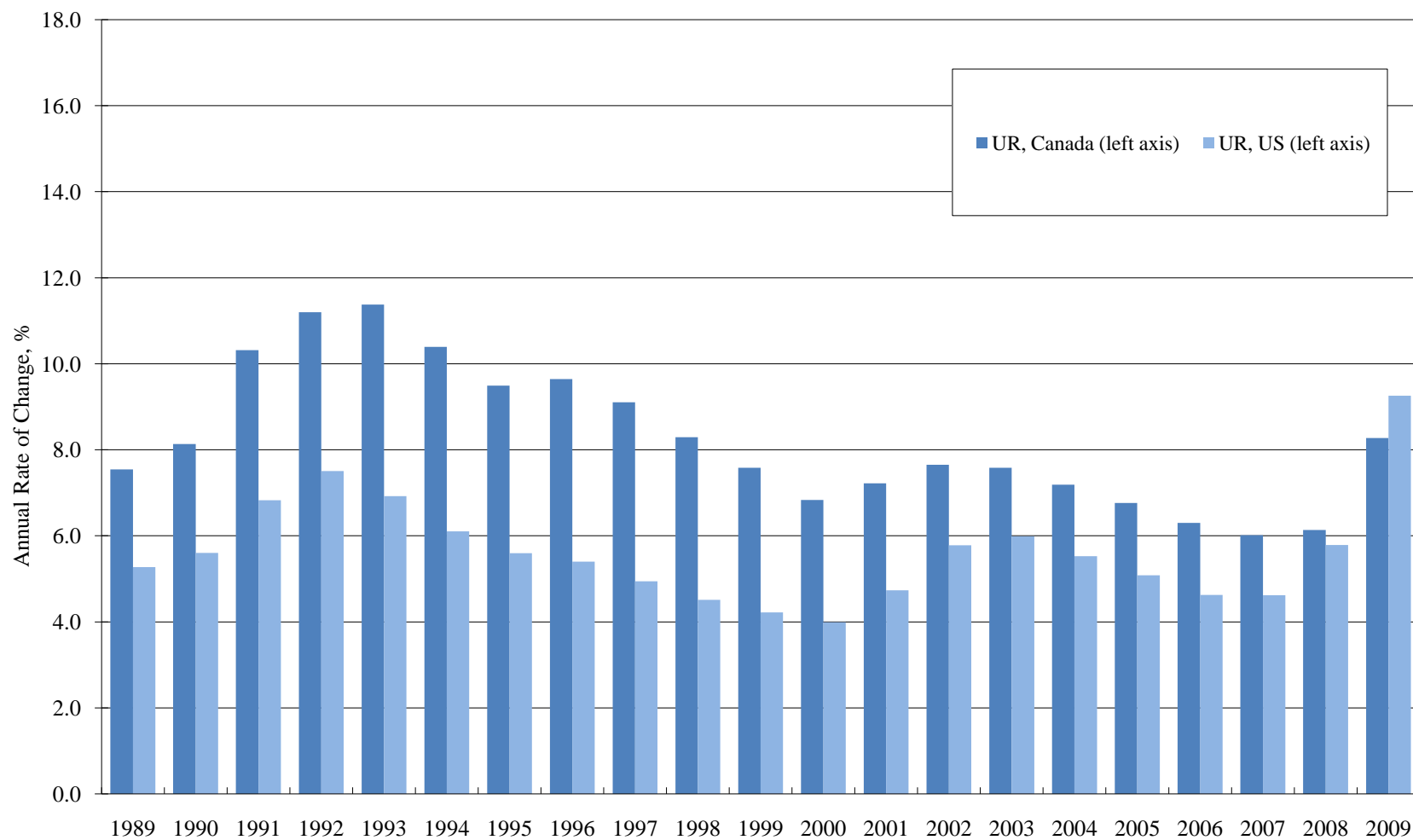
All labour market data (except for population) refer to population aged 15 and over in Canada and 16 and over in the United States. U.S. data in 2000 and 2003 are affected by new population benchmarks. Source: Tables 8 and 9.

Chart 6: Employment in Canada and the United States, 1989-2009



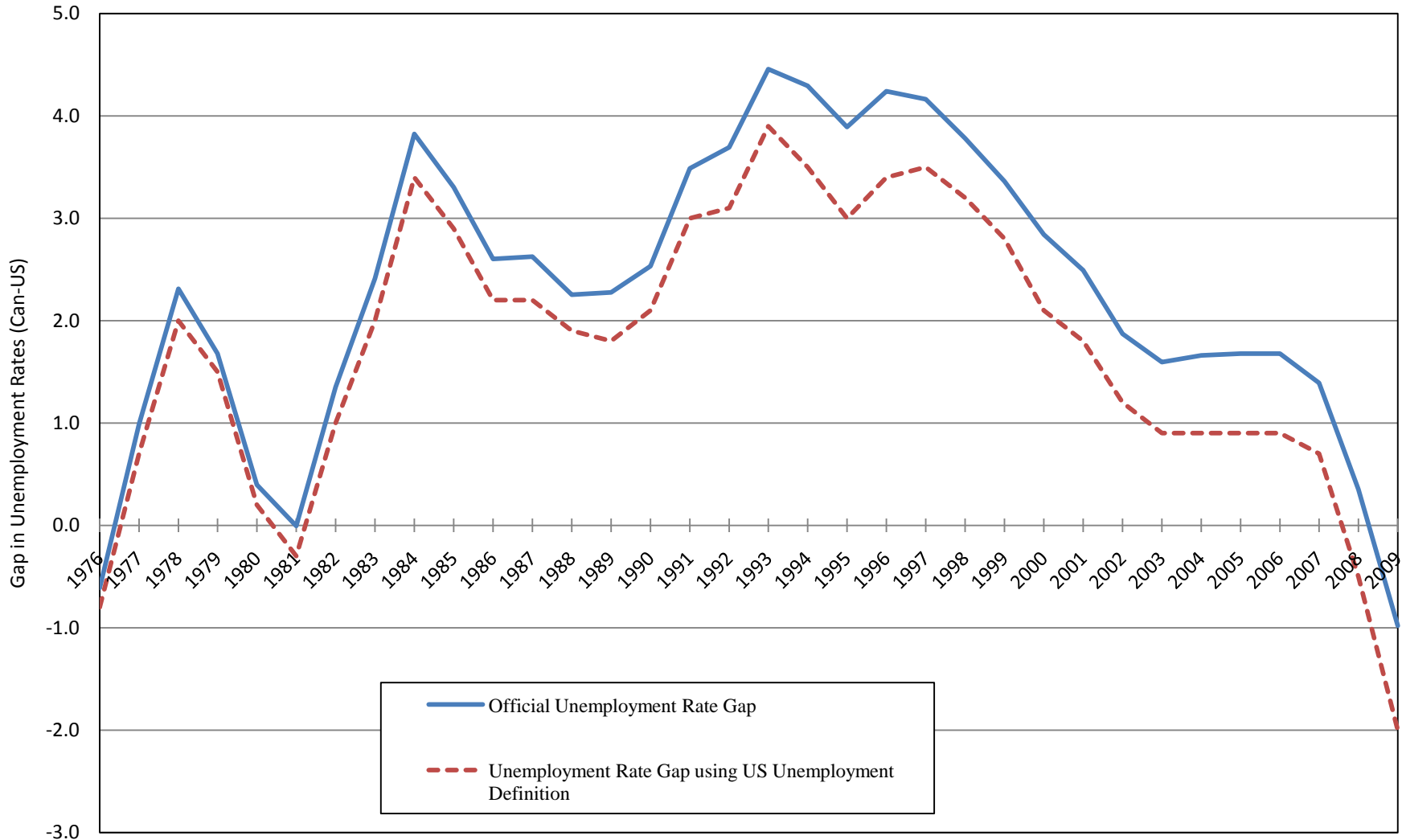
All labour market data (except for population) refer to population aged 15 and over in Canada and 16 and over in the United States. U.S. data in 2000 and 2003 are affected by new population benchmarks. Source: Tables 8 and 9.

Chart 7: Unemployment Rate in Canada and the United States, 1989-2009



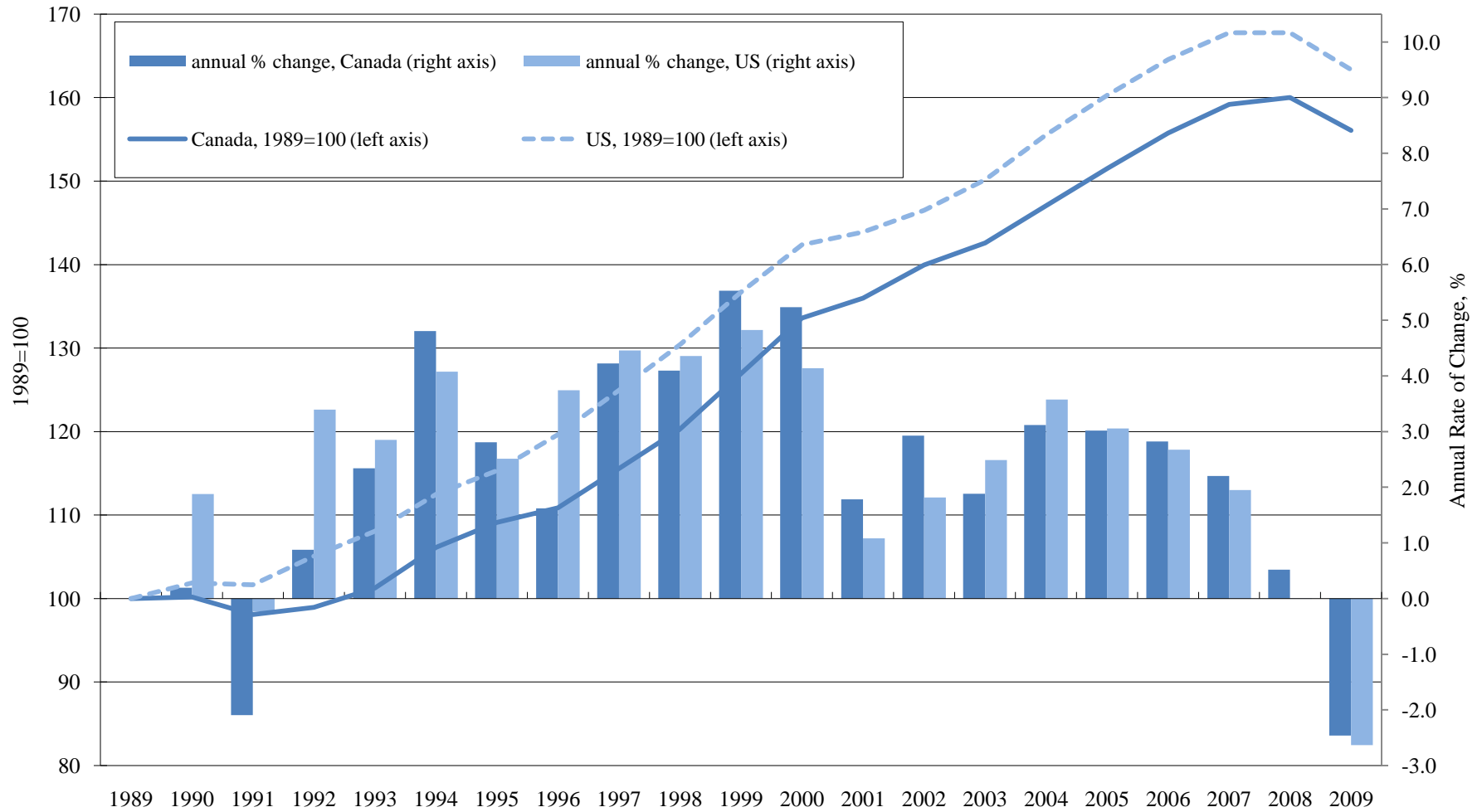
All labour market data (except for population) refer to population aged 15 and over in Canada and 16 and over in the United States. Source: Tables 8 and 9.

Chart 7a: Canada-United States Unemployment Rate Gaps 1976-2009



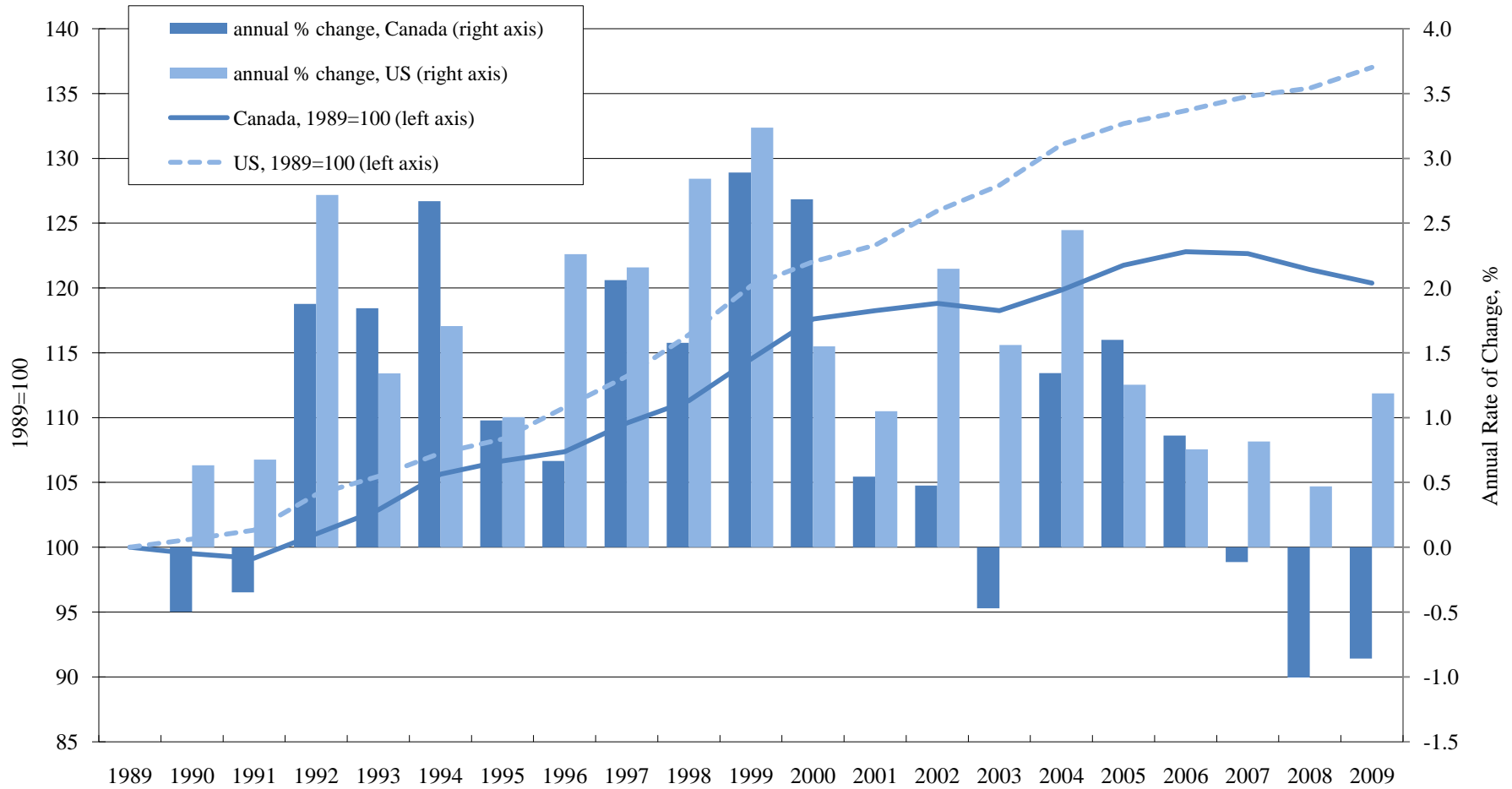
Source: Official Unemployment Rate Gap calculated from Tables 8 and 9, Unemployment Gap from US Unemployment Definition from BLS International Labor Comparison Table 1.2. Series breaks occur in this data for Canada in 1994 and for the United States in 1990 and 1994. Current as of October 8, 2010.

Chart 8: Real GDP in Canada and the United States, 1989-2009



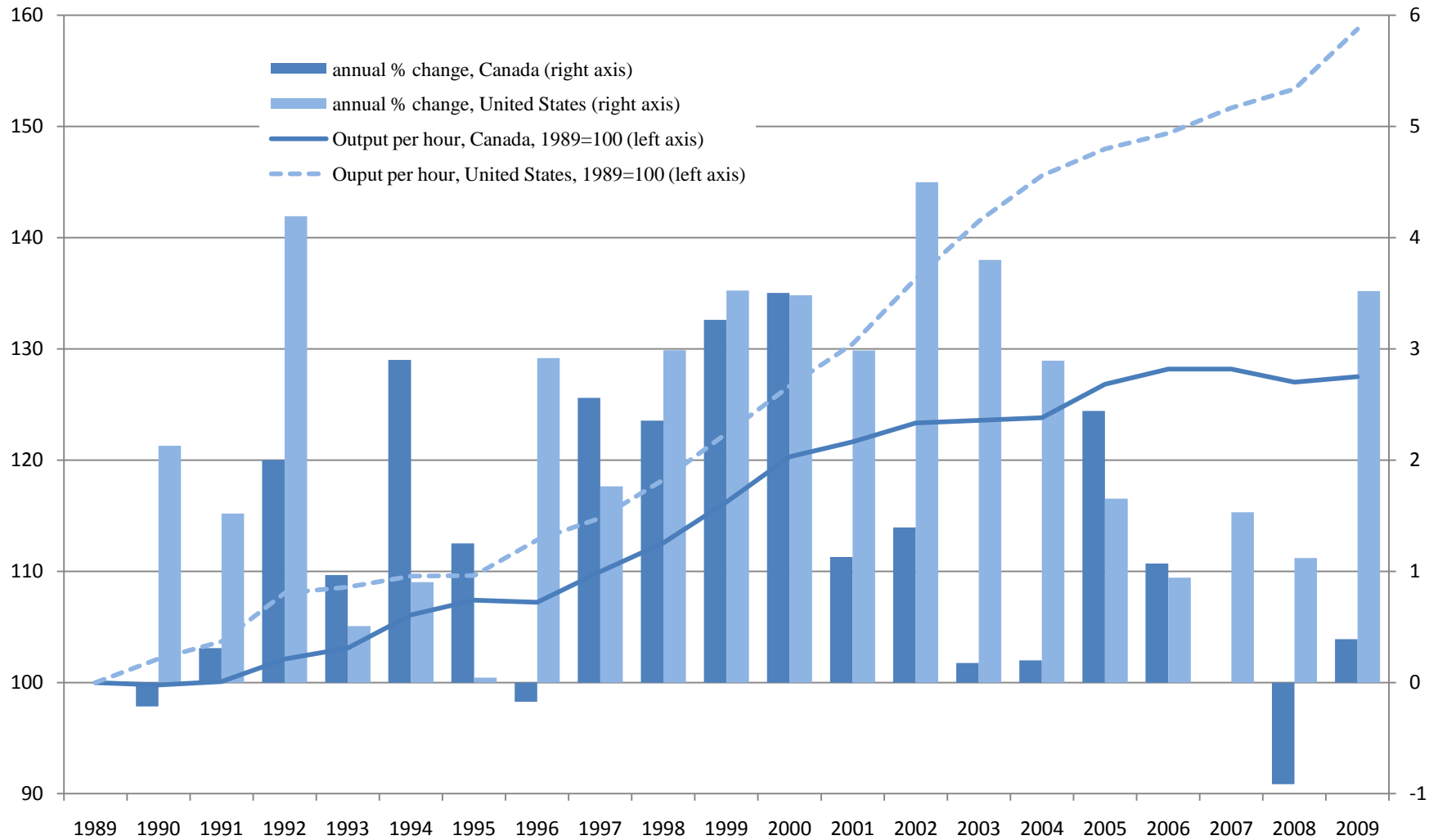
Source: Tables 4 and 5.

Chart 9: Labour Productivity (Real GDP per worker) in Canada and the United States, 1989-2009



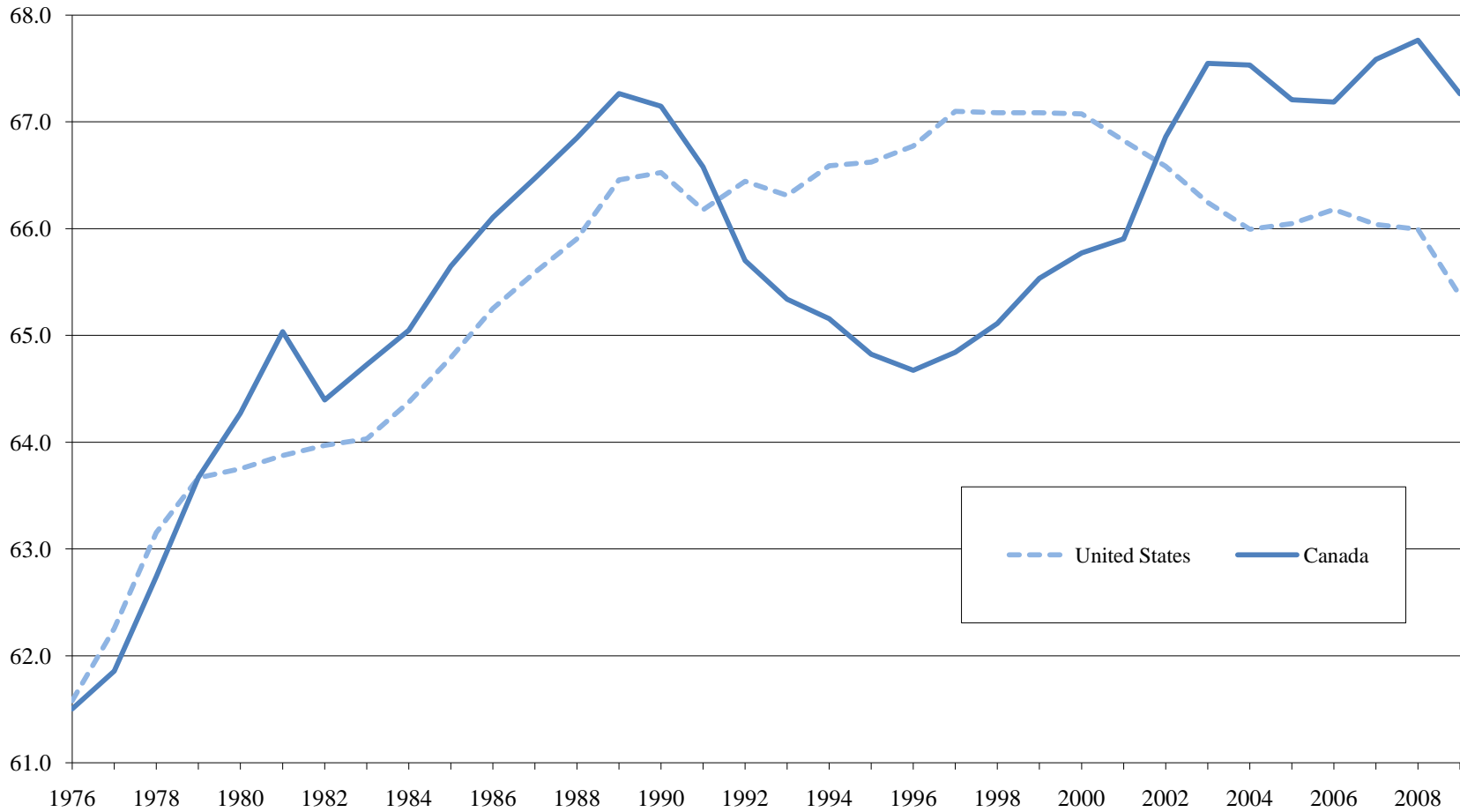
Employment data refer to population aged 15 and over in Canada and 16 and over in the United States. U.S. data in 2000 and 2003 are affected by new population benchmarks in the employment series. Source: Tables 10 and 11.

Chart 10: Output per Hour in the Business Sector, Canada and the United States, 1989-2009



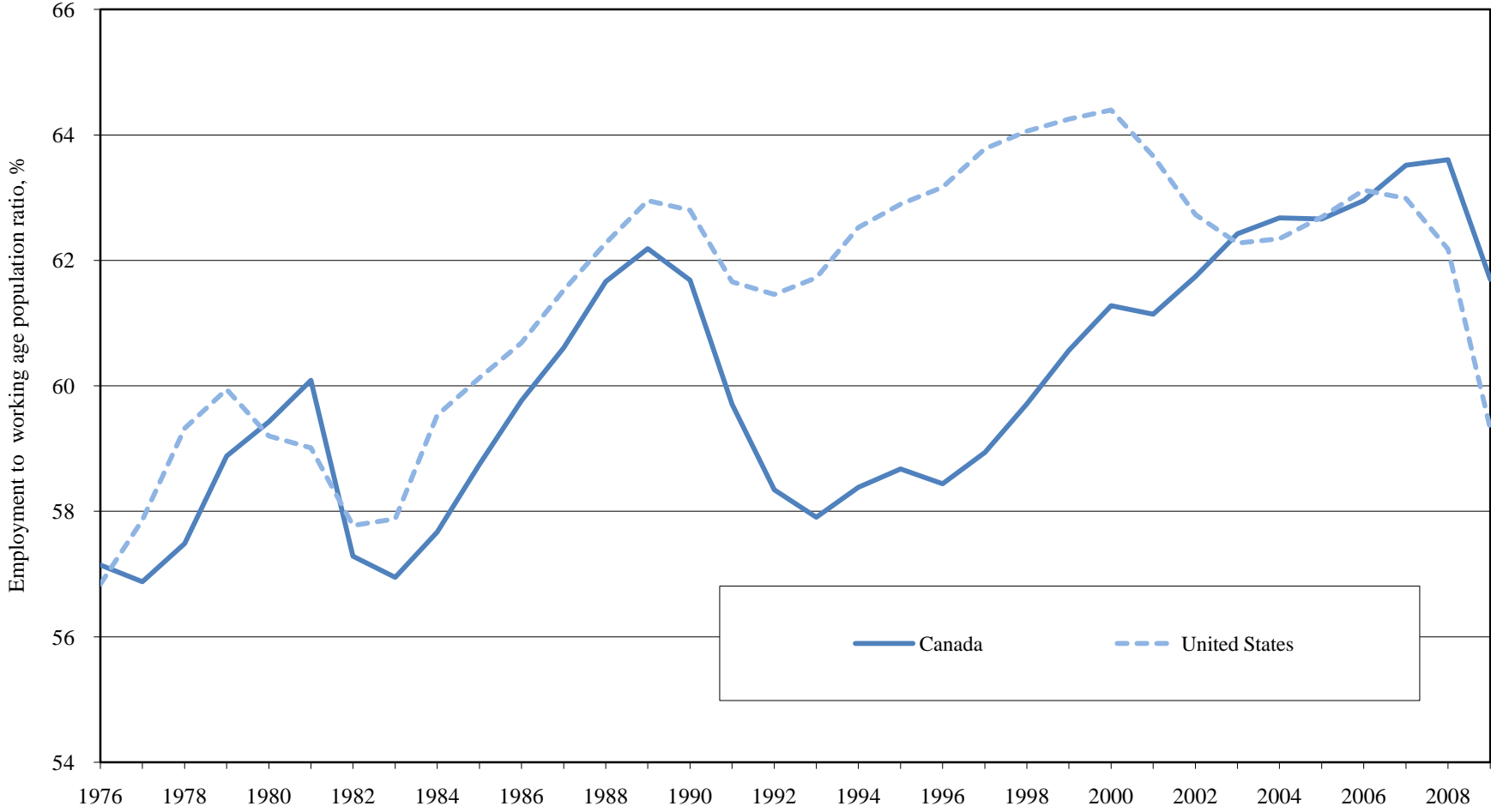
Source: Table 6

Chart 11: Labour Force Participation Rate, Canada and the United States, 1976-2009



All labour market data (except for population) refer to population aged 15 and over in Canada and 16 and over in the United States. Source: Tables 8 and 9.

Chart 12: Employment to Working Age Population Ratio, Canada and the United States, 1976-2009



All labour market data (except for population) refer to population aged 15 and over in Canada and 16 and over in the United States. Source: Tables 8 and 9.