

The Current and Future Contribution of the Aboriginal Community to the Economy of Saskatchewan

Andrew Sharpe, Executive Director

Centre for the Study of Living Standards

Saskatchewan Association of Health Organizations

Career Pathing Pilot Project Symposium

October 8-9, 2008

Saskatoon, Saskatchewan

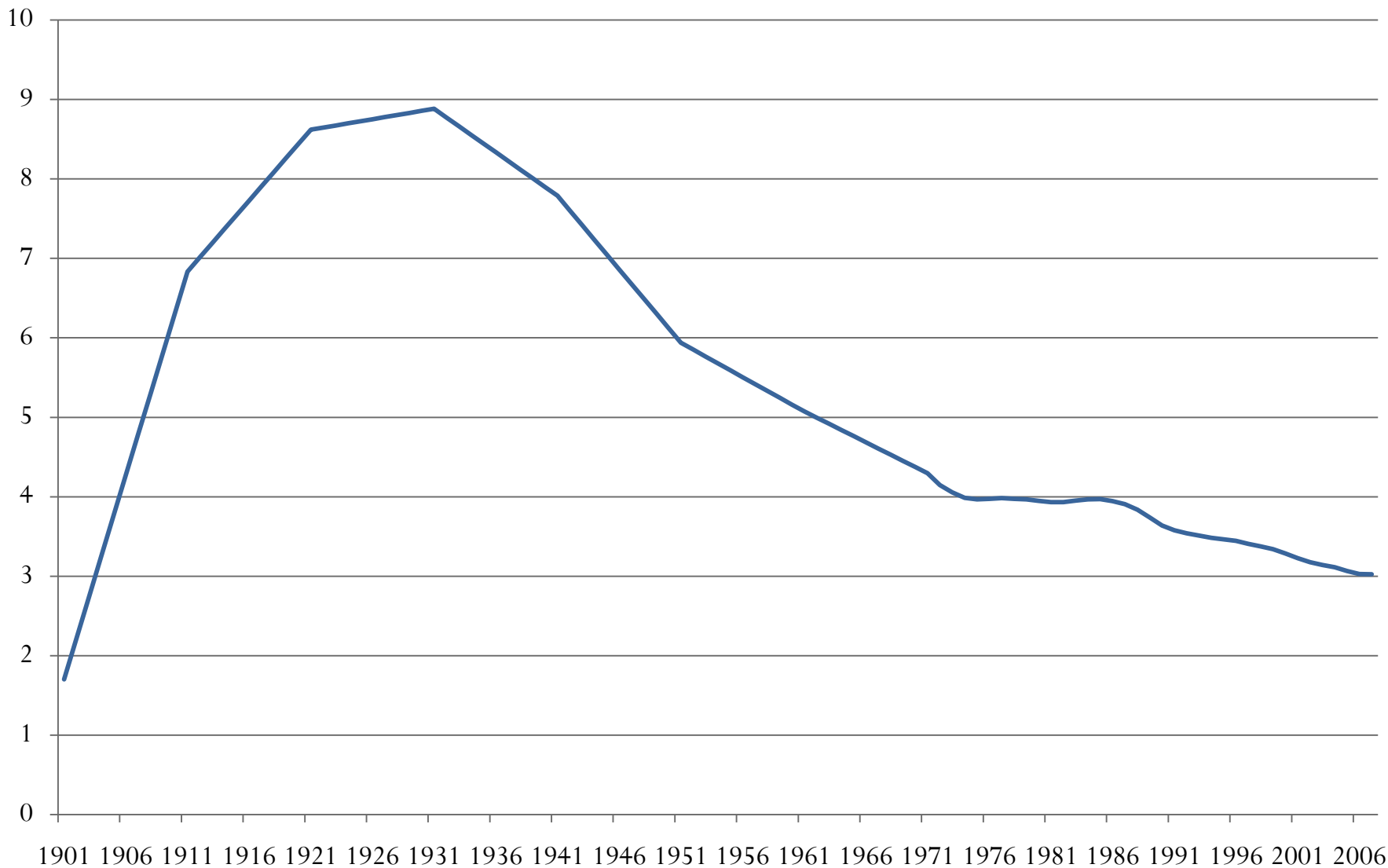
Outline

- I. Background
 - A. Historical and Current State of the Economy of Saskatchewan
 - B. Forecast for the Economy of Saskatchewan

- II. Aboriginal People in Saskatchewan
 - I. General Background
 - II. Labour Market Outcomes based on Census Data
 - III. Recent Labour Market Trends in the Western Provinces

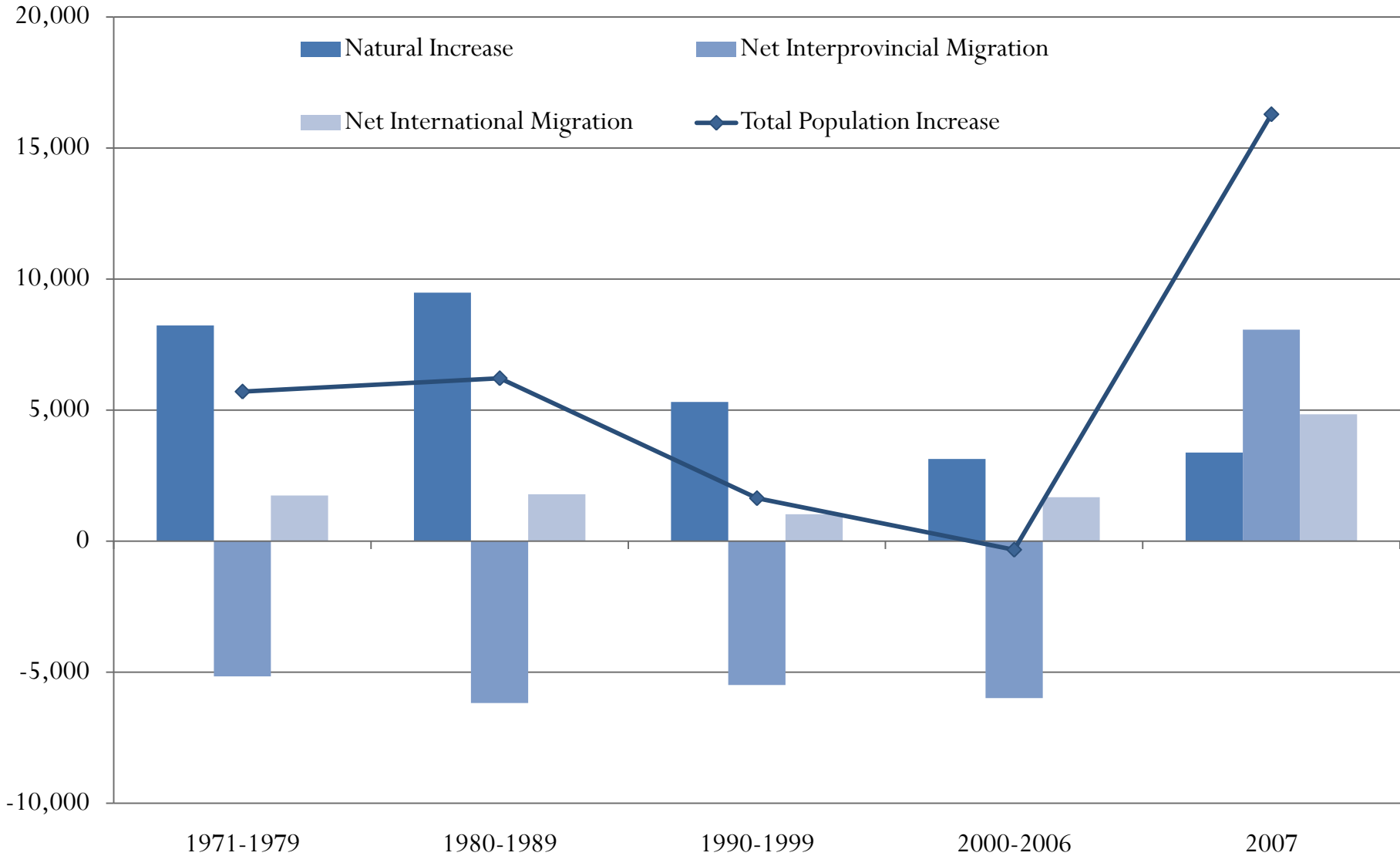
- III. Estimating the Effect of Increased Aboriginal Educational Attainment on the Saskatchewan Labour Market

Population of Saskatchewan as a Share of the National Population, 1901-2007



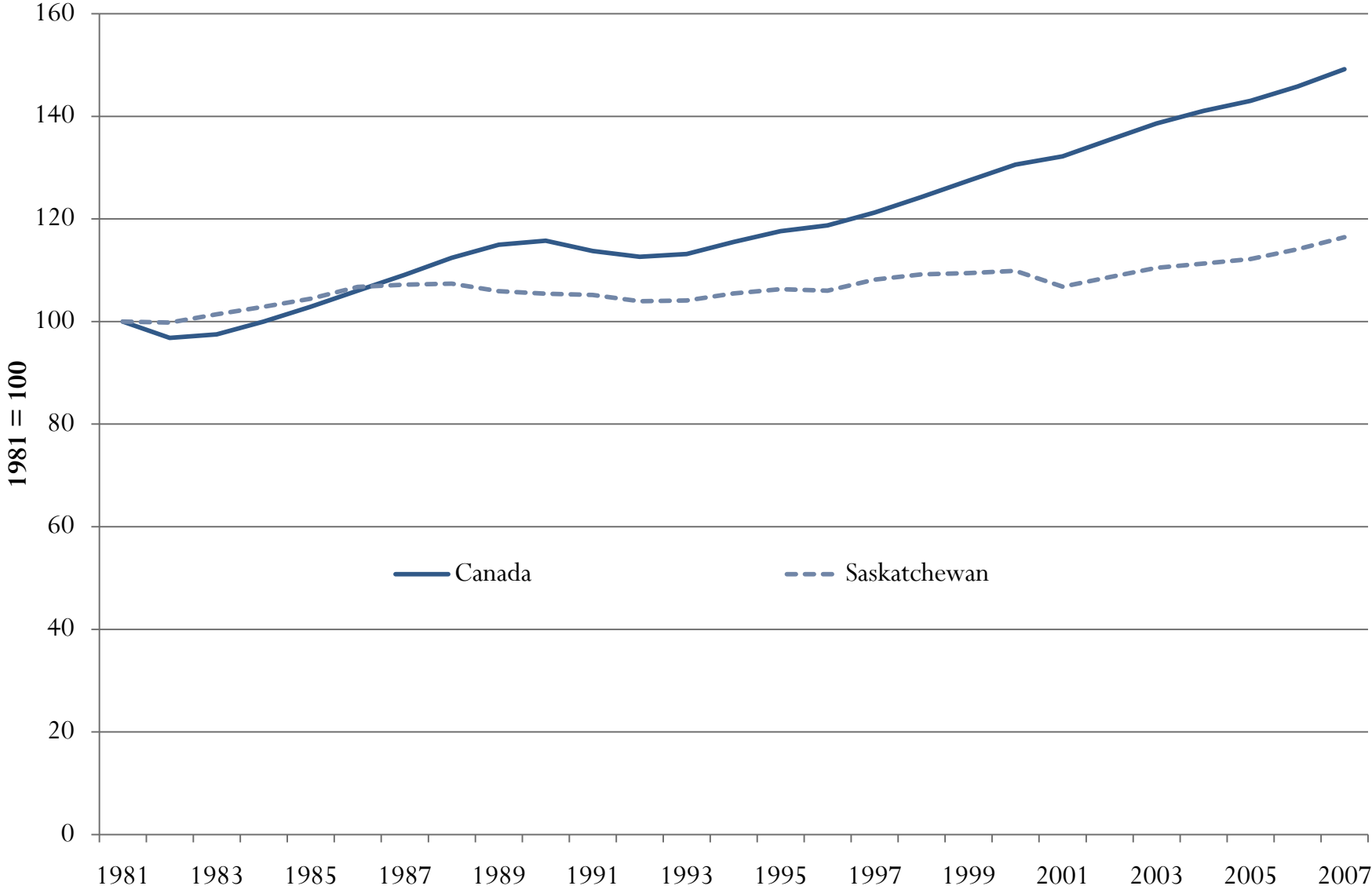
Source: Statistics Canada, Historical Statistics and Population Statistics. Between 1901 and 1971, data is available only for census years. Between censuses, population levels were interpolated linearly.

Average Annual Population Growth by Component in Saskatchewan, 1971-1979, 1980-1979, 1990-1999, 2000-2006 and 2007



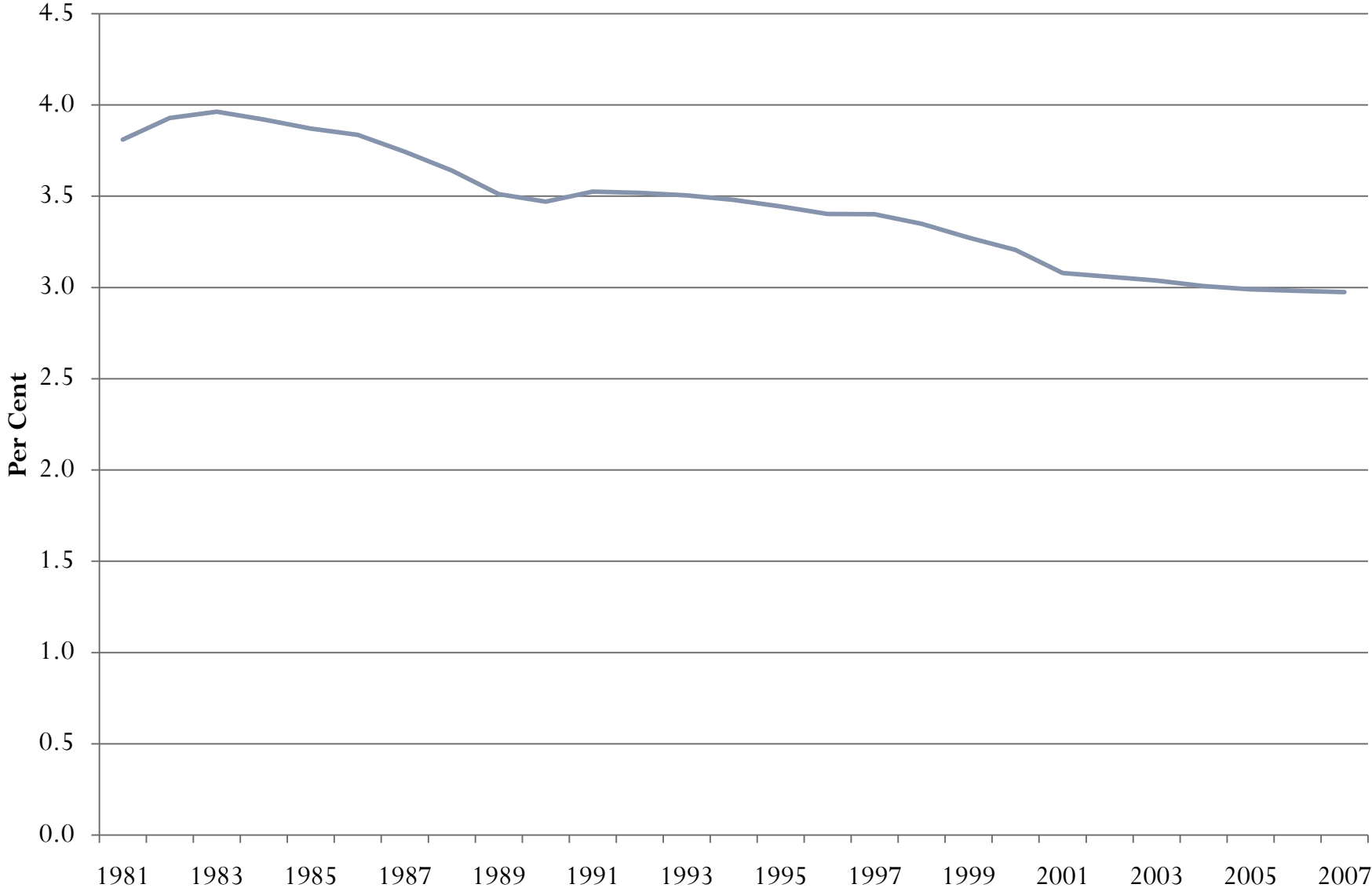
Source: Statistics Canada Population Statistics.

Index of Employment in Canada and Saskatchewan 1981 = 100



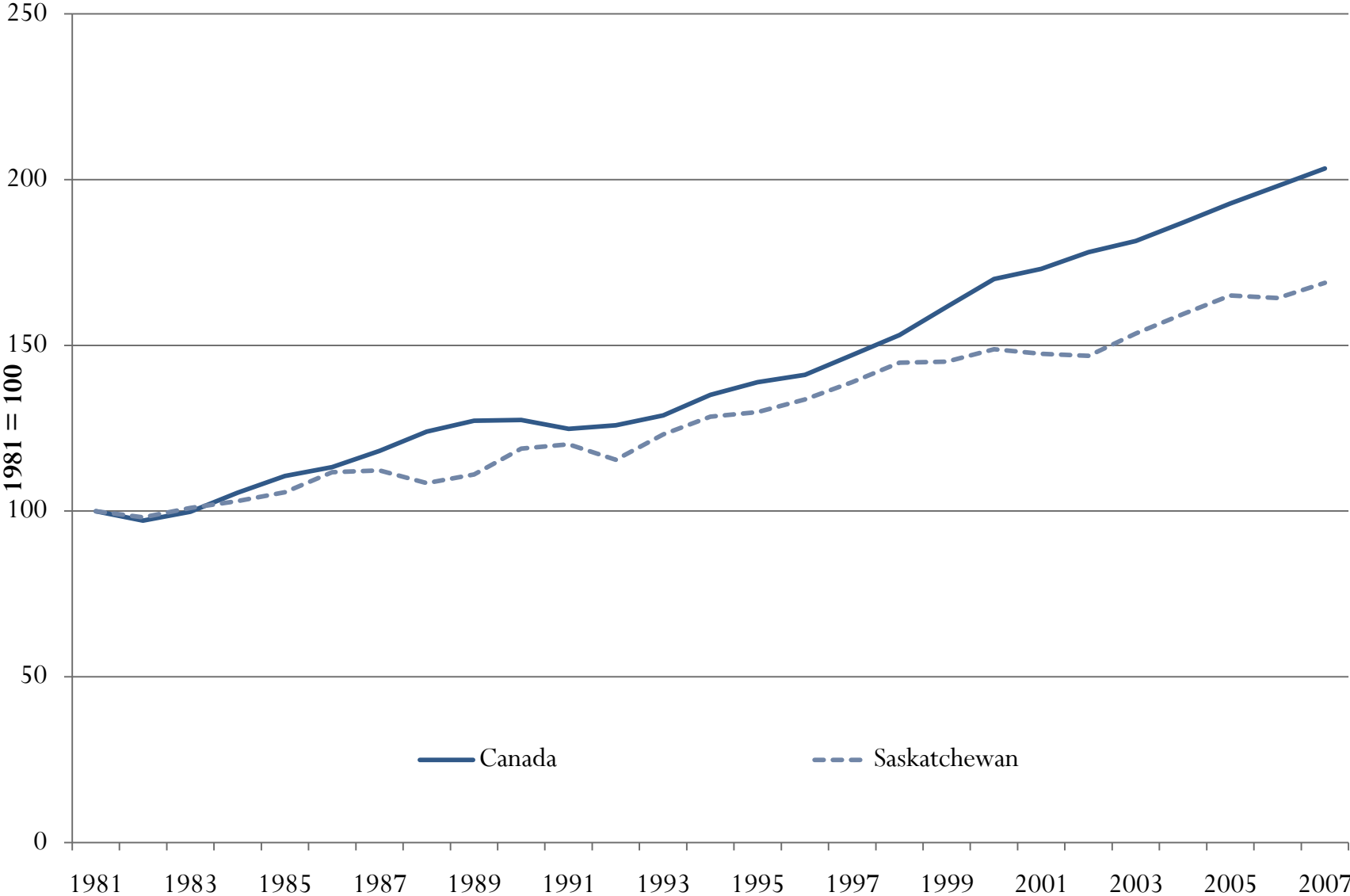
Source: Statistics Canada, Labour Force Survey

Employment in Saskatchewan as a Share of Employment in Canada, 1981-2007



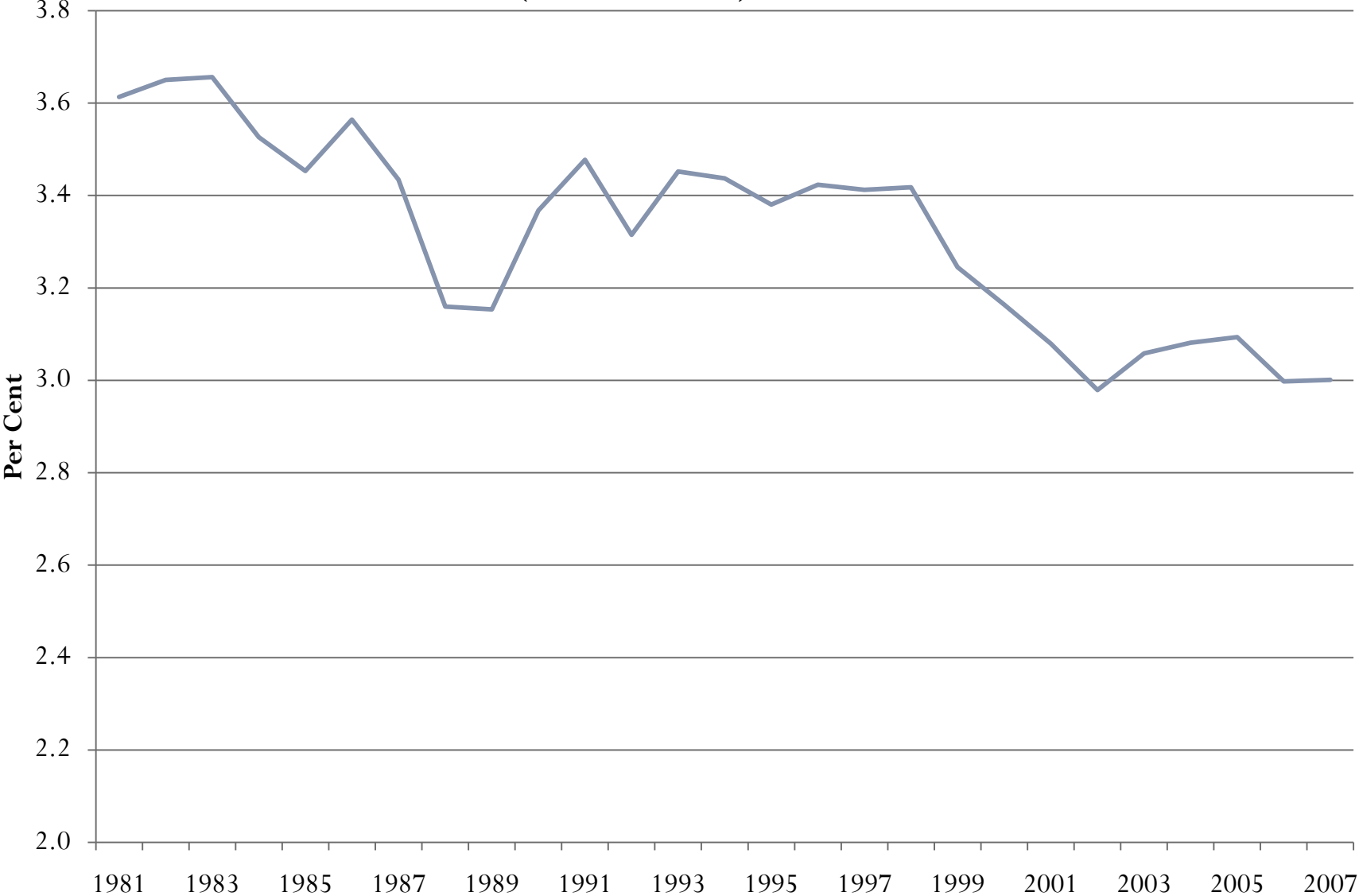
Source: Statistics Canada, Labour Force Survey

Index of Real GDP in Canada and Saskatchewan (\$2002 chained) 1981 = 100



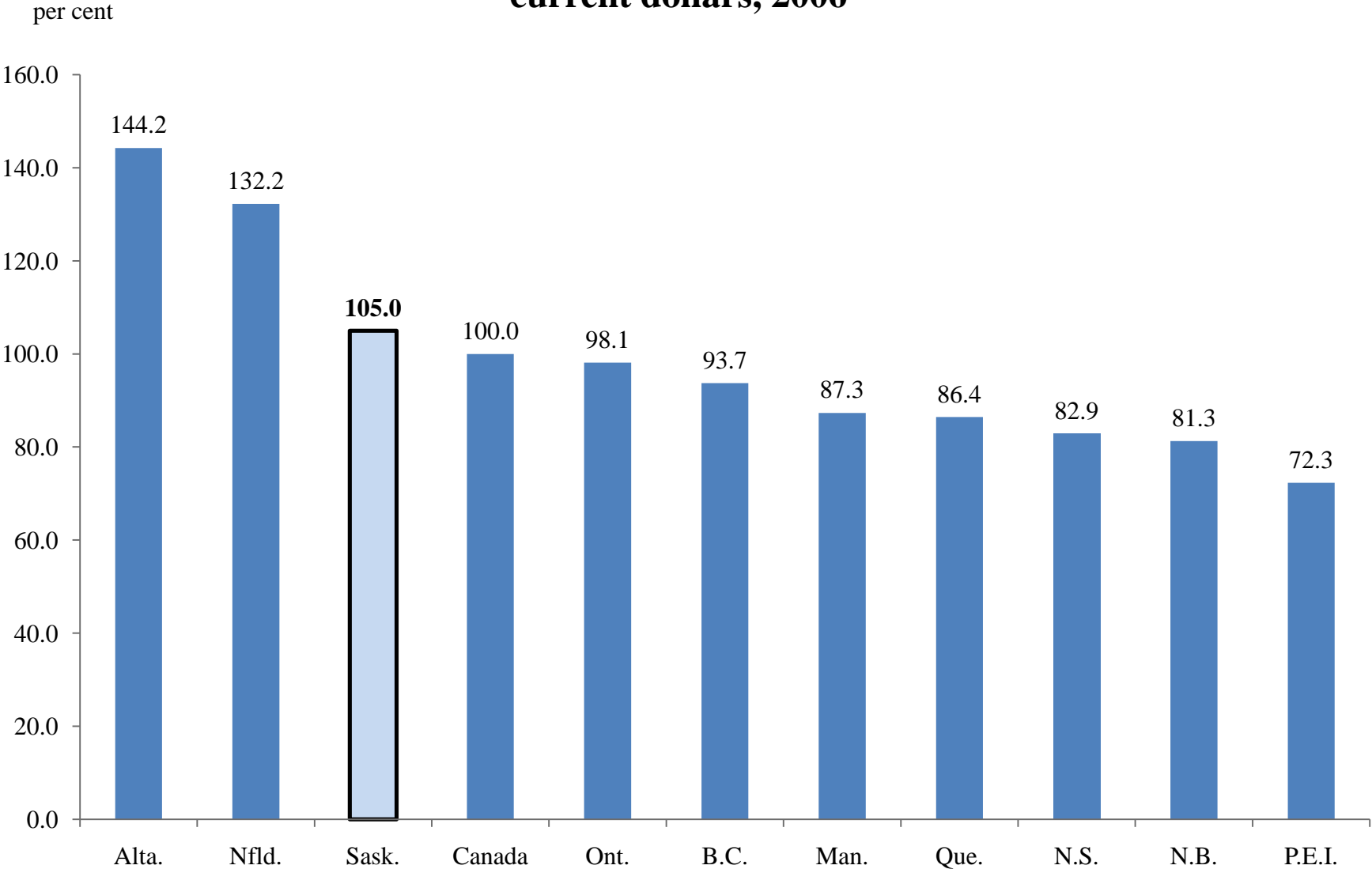
Source: Statistics Canada, Provincial Economic Accounts

Real GDP in Saskatchewan as a Share of Real GDP in Canada (\$2002 chained), 1981-2007



Source: Statistics Canada, Provincial Economic Accounts

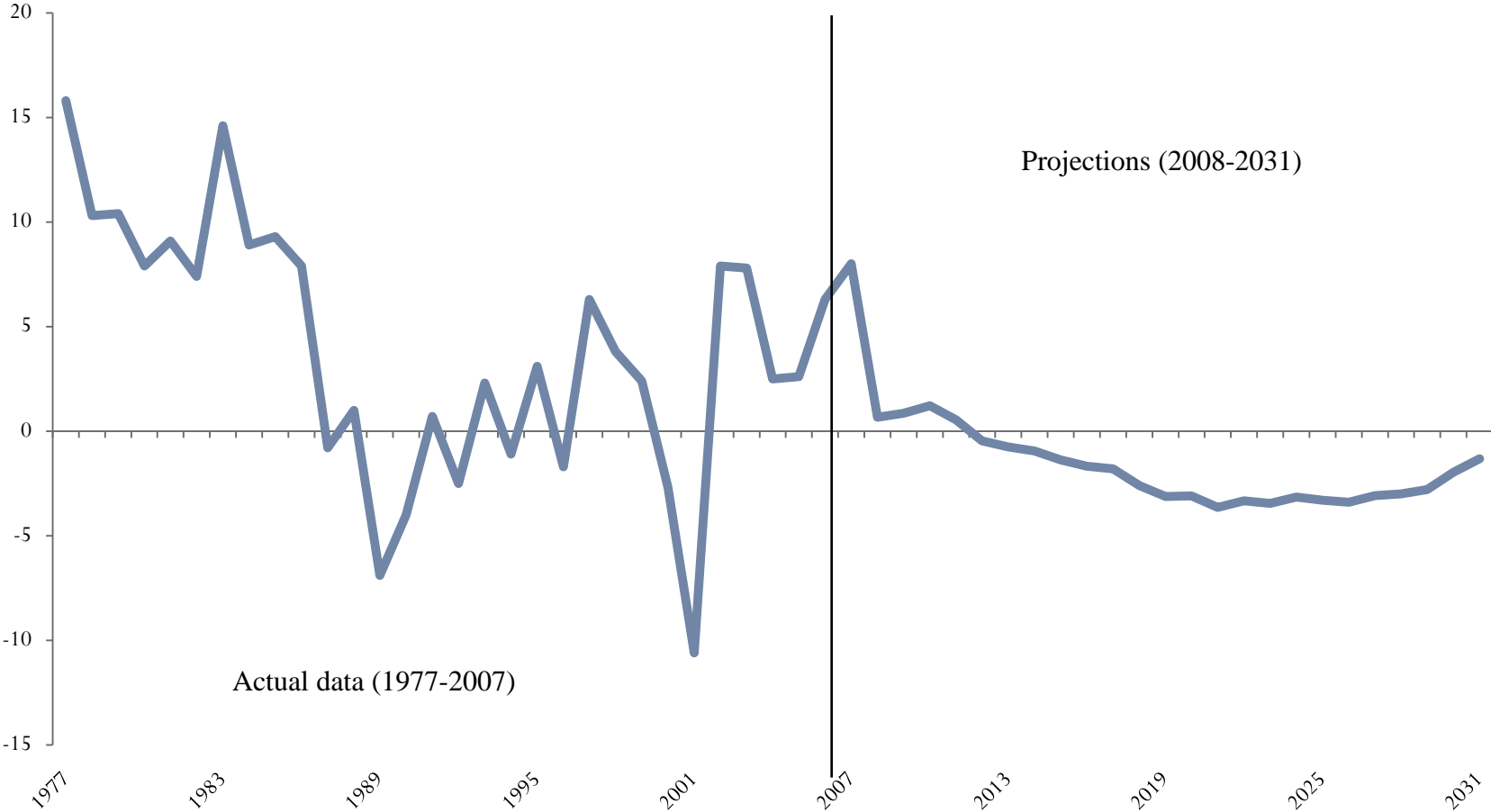
Provincial GDP per worker as a percentage of national average, current dollars, 2006



Source: Provincial Economic Accounts and Labour Force Survey, Statistics Canada.

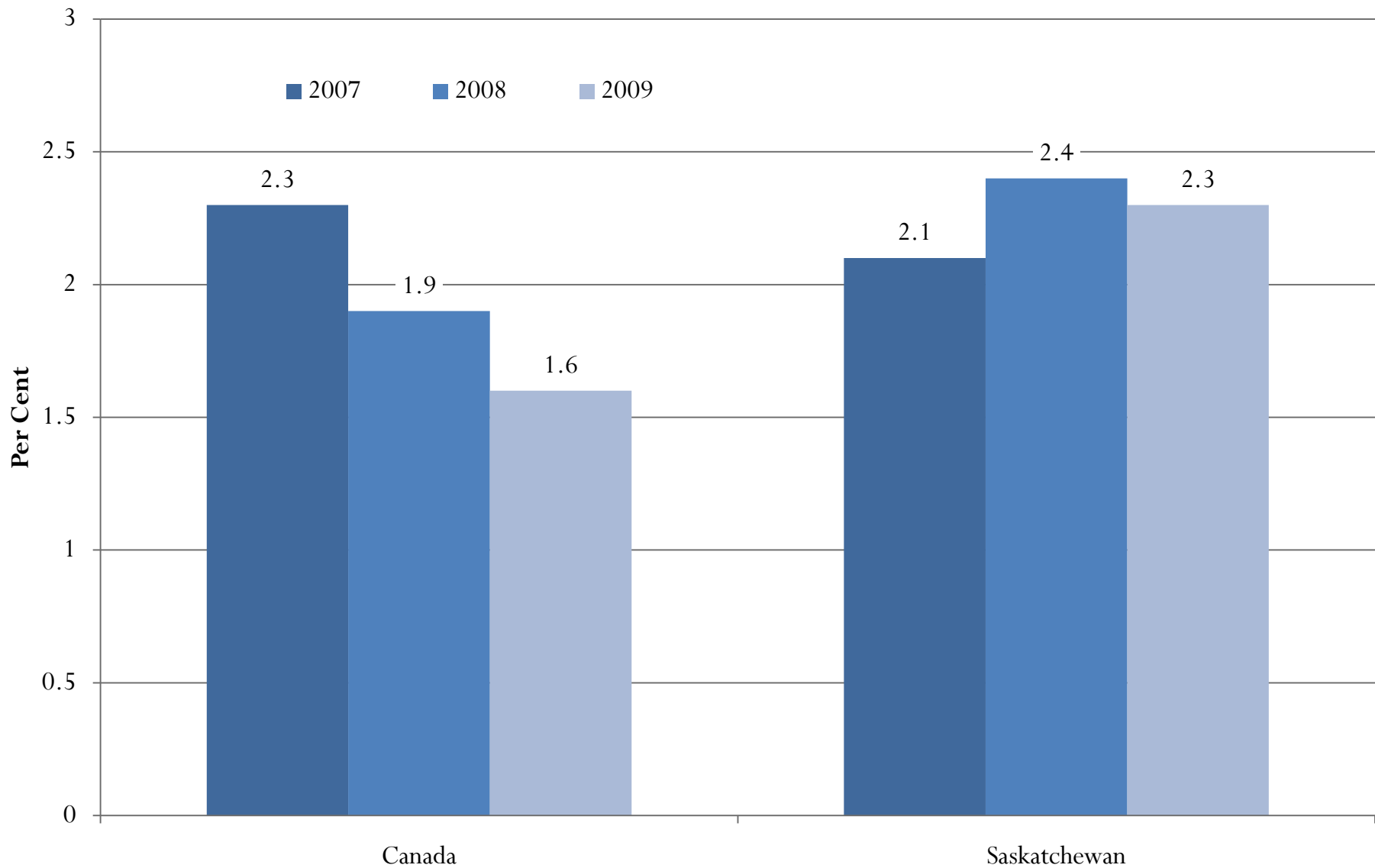
Labour Force Growth (15+) in Saskatchewan, 1977-2031

Thousands of persons



Source: Labour force estimates for 1976-2007 from Statistics Canada, Labour Force Survey; for 2008-2026 from Statistics Canada, Population Estimates and Projections. Note: Projected labour force estimates are calculated by multiplying projected population with the 2007 labour force participation rates for the 15-44 age group, the 45-64 age group and the 65 and over age group.

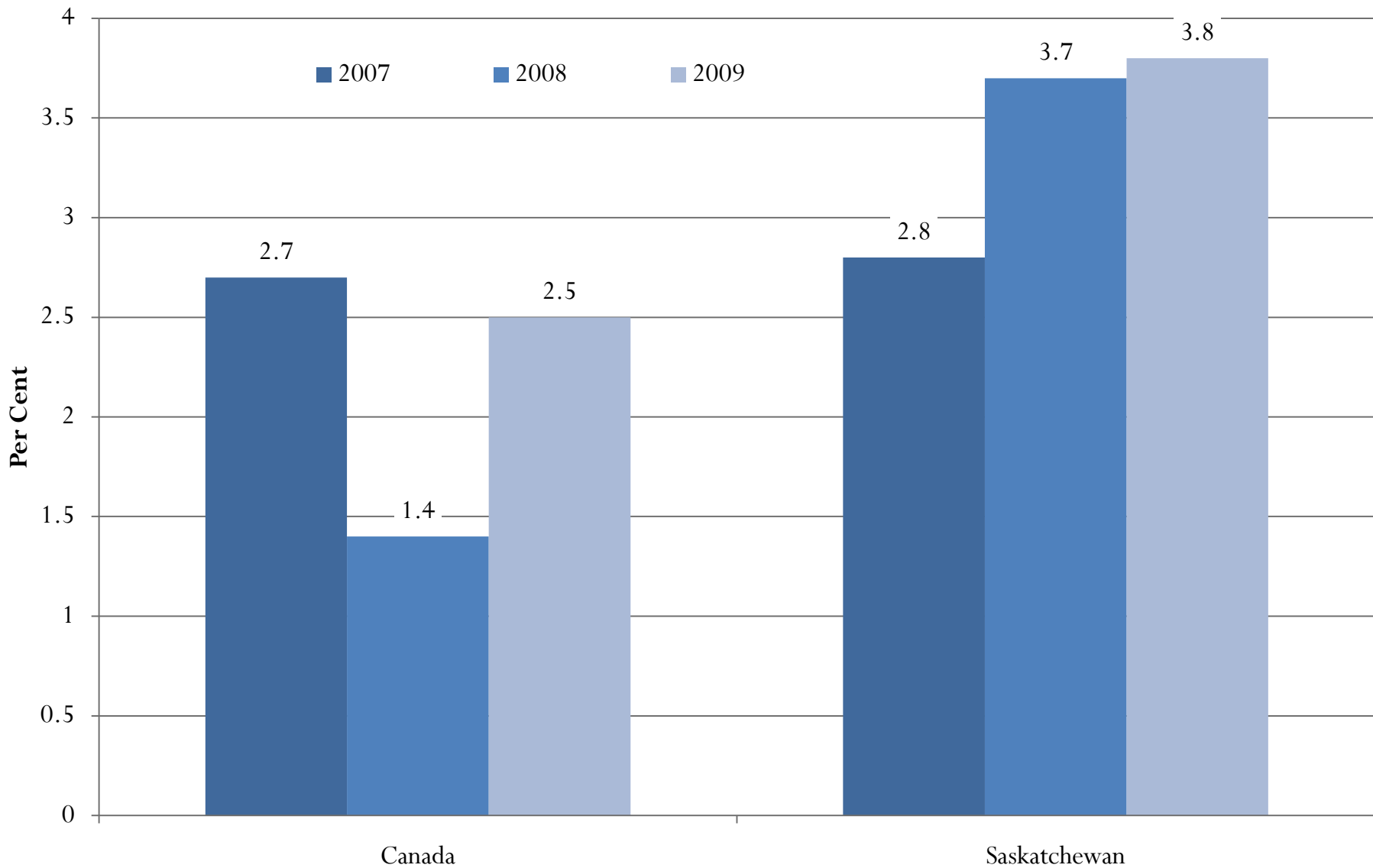
Employment Growth Forecast* for Canada and Saskatchewan, 2007-2009



Source: RBC Provincial Outlook, July 2008.

*Actual estimates for 2007. Forecast for 2008 and 2009.

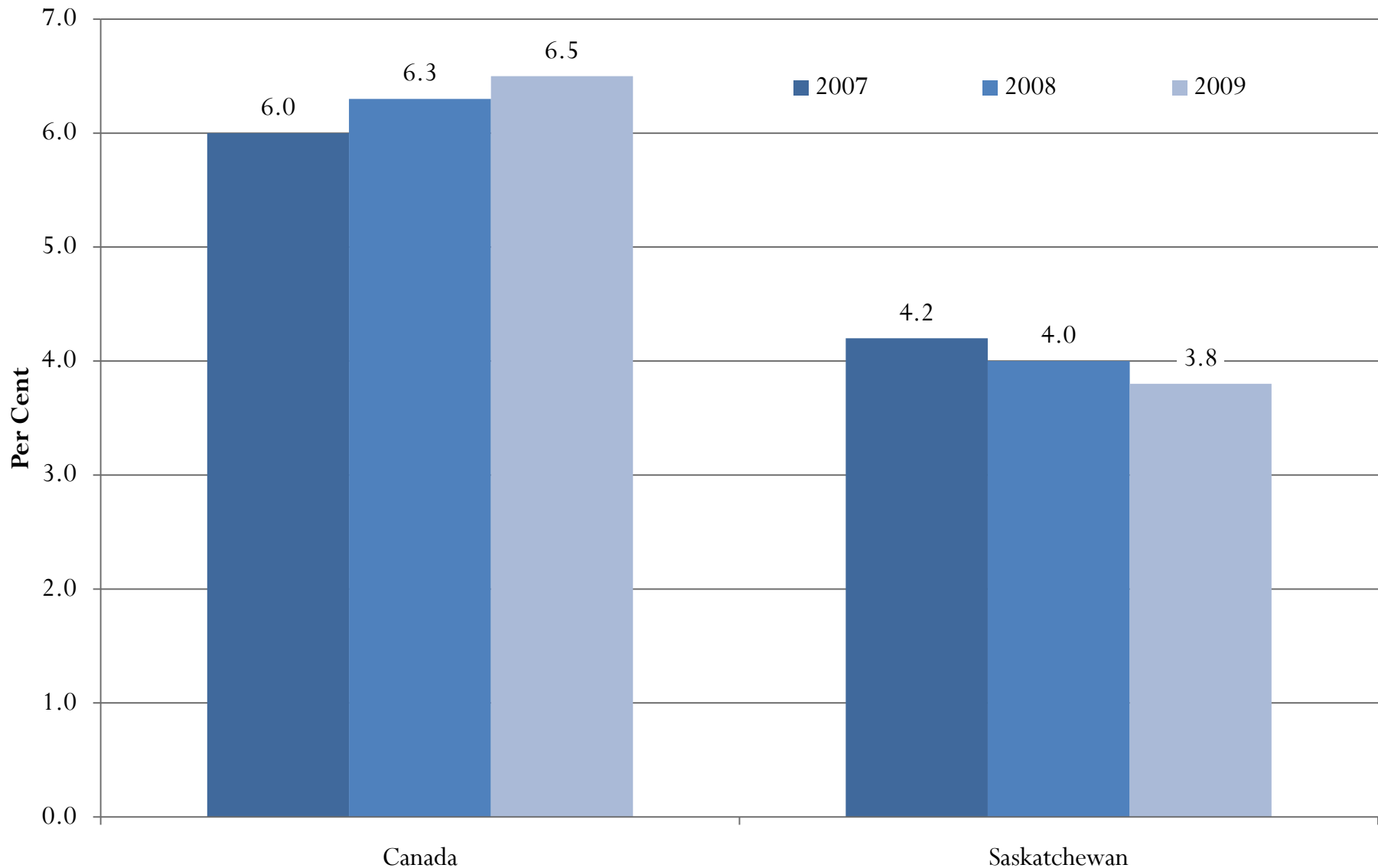
Real GDP Growth Forecast* for Canada and Saskatchewan, 2007-2009



Source: RBC Provincial Outlook, July 2008.

*Actual estimates for 2007. Forecast for 2008 and 2009.

Unemployment Rate Forecast* for Canada and Saskatchewan, 2007-2009



Source: RBC Provincial Outlook, July 2008.

*Actual estimates for 2007. Forecast for 2008 and 2009.

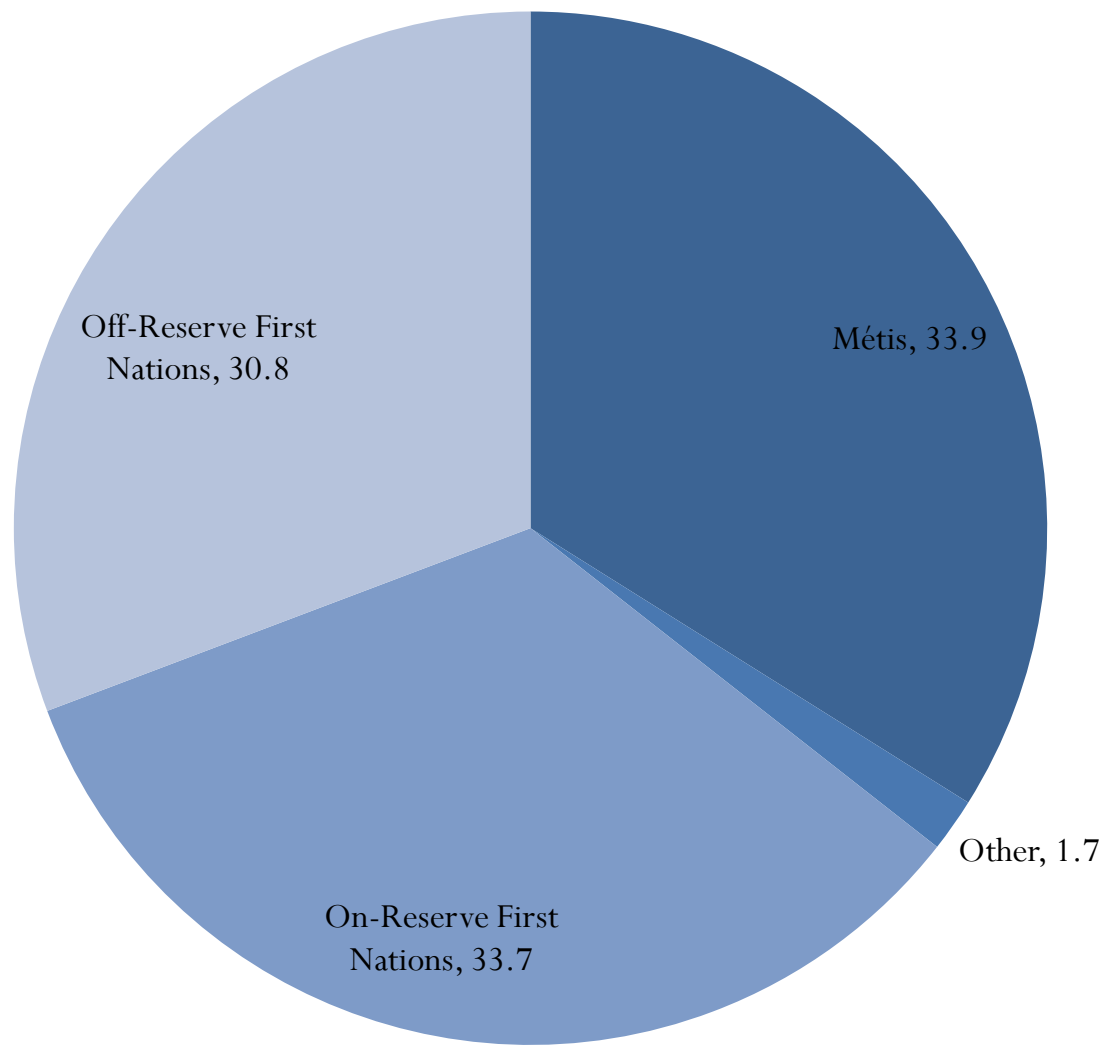
Geographic Distribution of Aboriginal Population in Canada, 2006

Geographic Distribution of Aboriginal Population in Canada, 2006

	Proportion of the Canadian Population	Proportion of the Aboriginal Population	Share of the Aboriginal Population in Total Population
Canada	100.0	100.0	3.8
Atlantic Canada	7.2	5.7	3.0
Quebec	23.8	9.2	1.5
Ontario	38.5	20.7	2.0
Western Canada	30.1	59.8	7.5
Manitoba	3.6	15.0	15.5
Saskatchewan	3.1	12.1	14.9
Alberta	10.4	16.1	5.8
British Columbia	13.0	16.7	4.8
Territories	0.3	4.5	52.8
Yukon Territory	0.1	0.6	25.1
Northwest Territories	0.1	1.8	50.3
Nunavut	0.1	2.1	85.0

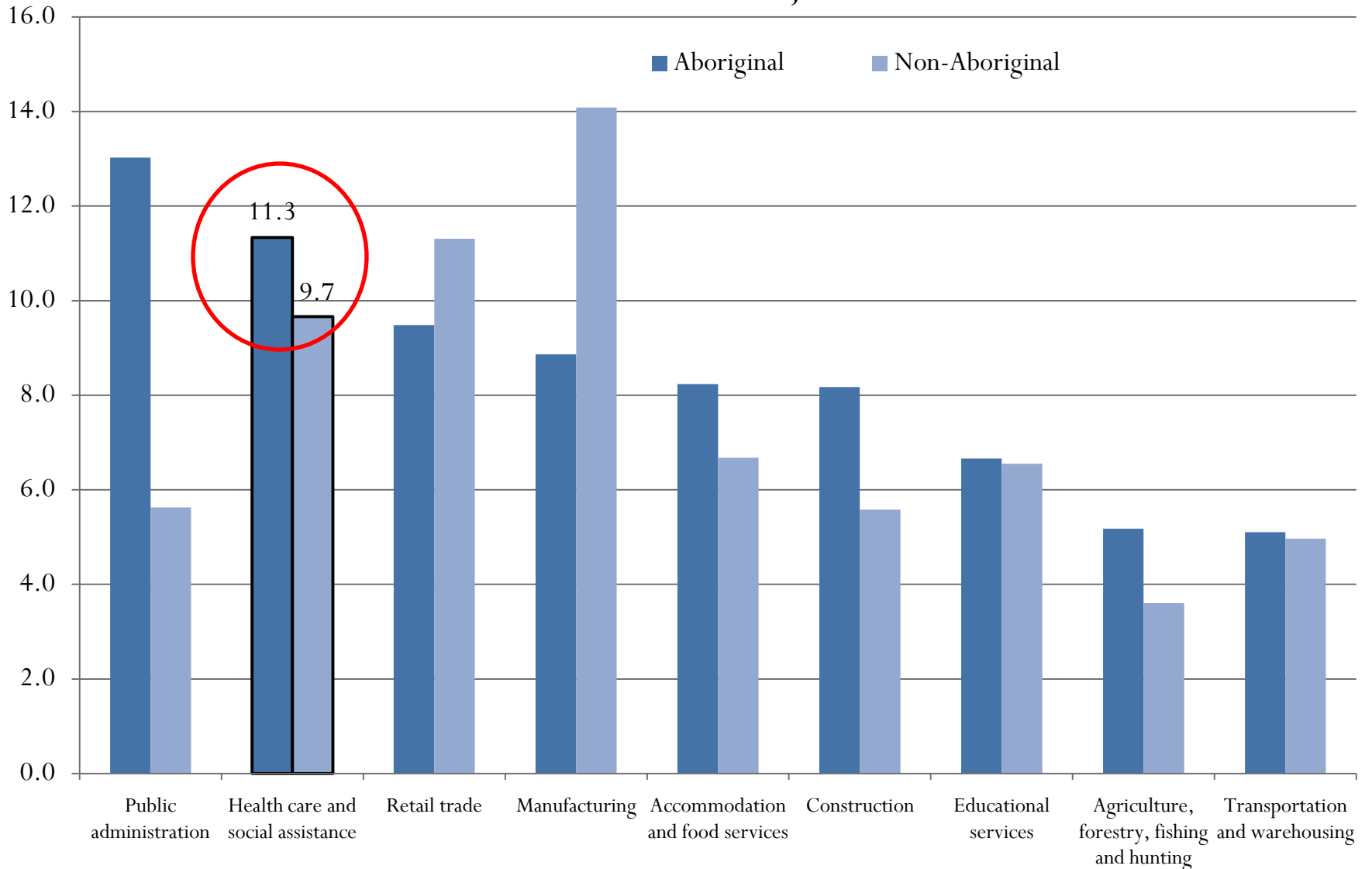
Source: Census 2006 Tabulations

Distribution of Aboriginal Identity Population in Saskatchewan, in per cent, 2006



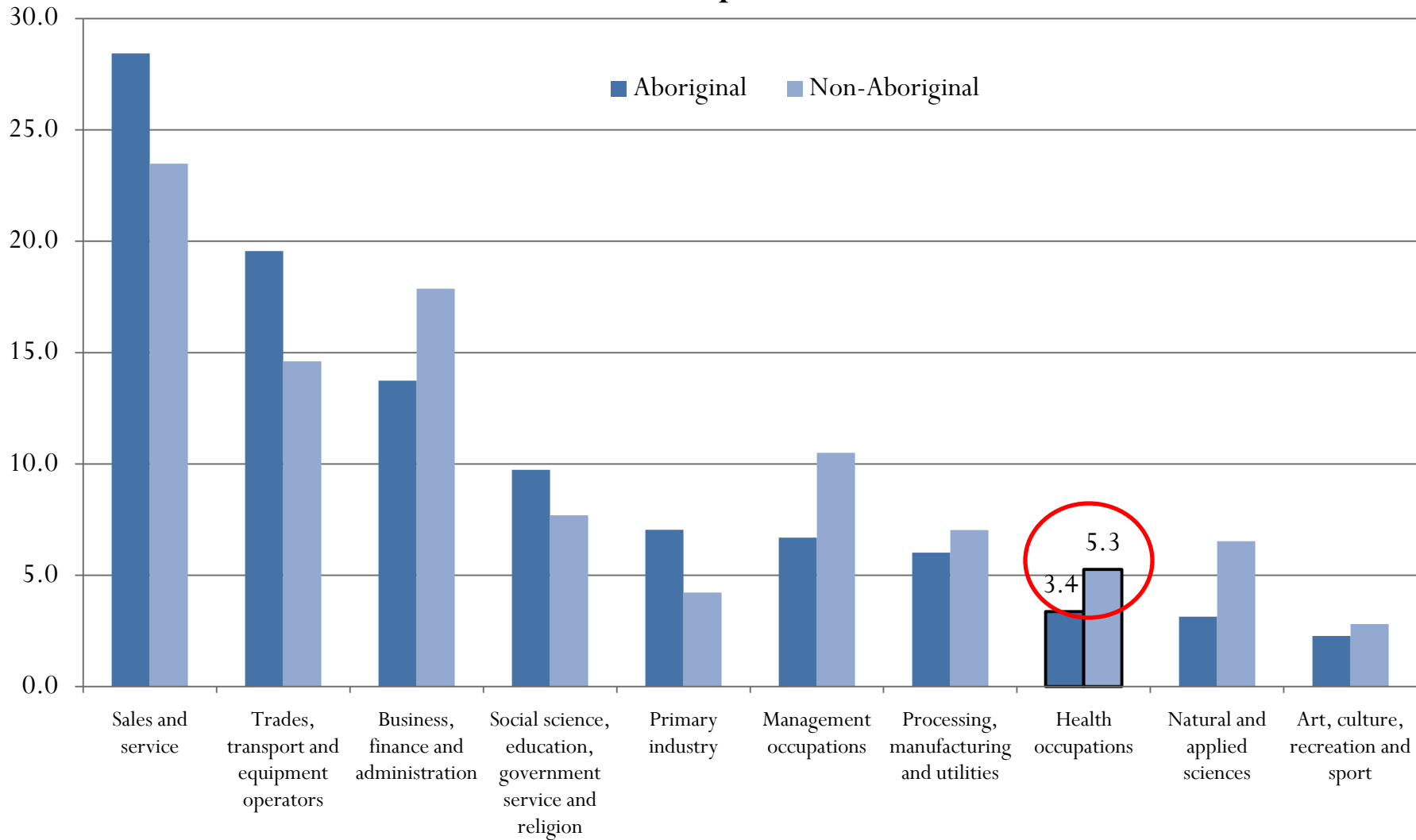
Source: Statistics Canada, 2006 Census.

Share of Aboriginal and Non-aboriginal Labour Force in Saskatchewan for Selected Industries, 2001



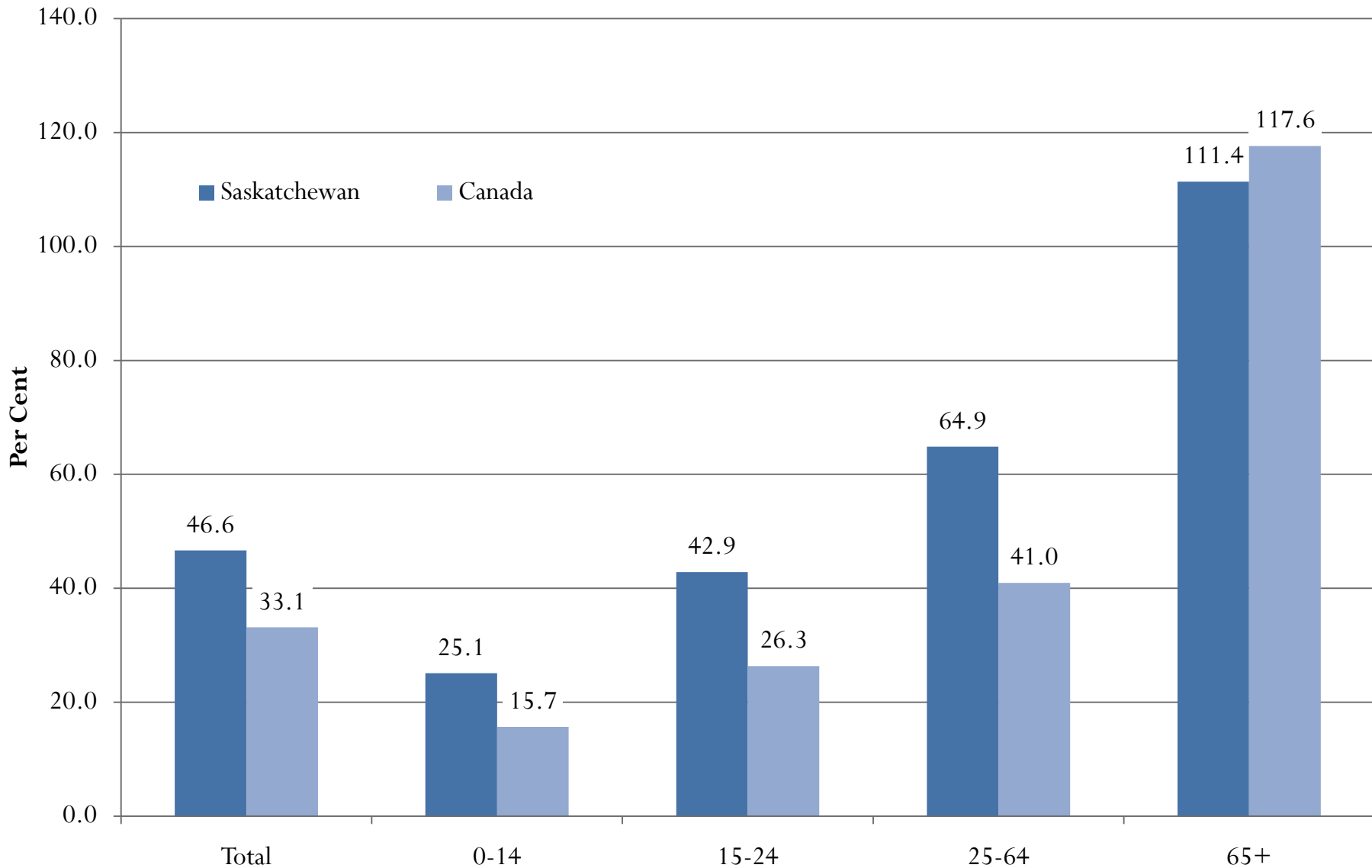
Source: Census 2001

Share of Aboriginal and Non-aboriginal Labour Force in Saskatchewan for Selected Occupations, 2001



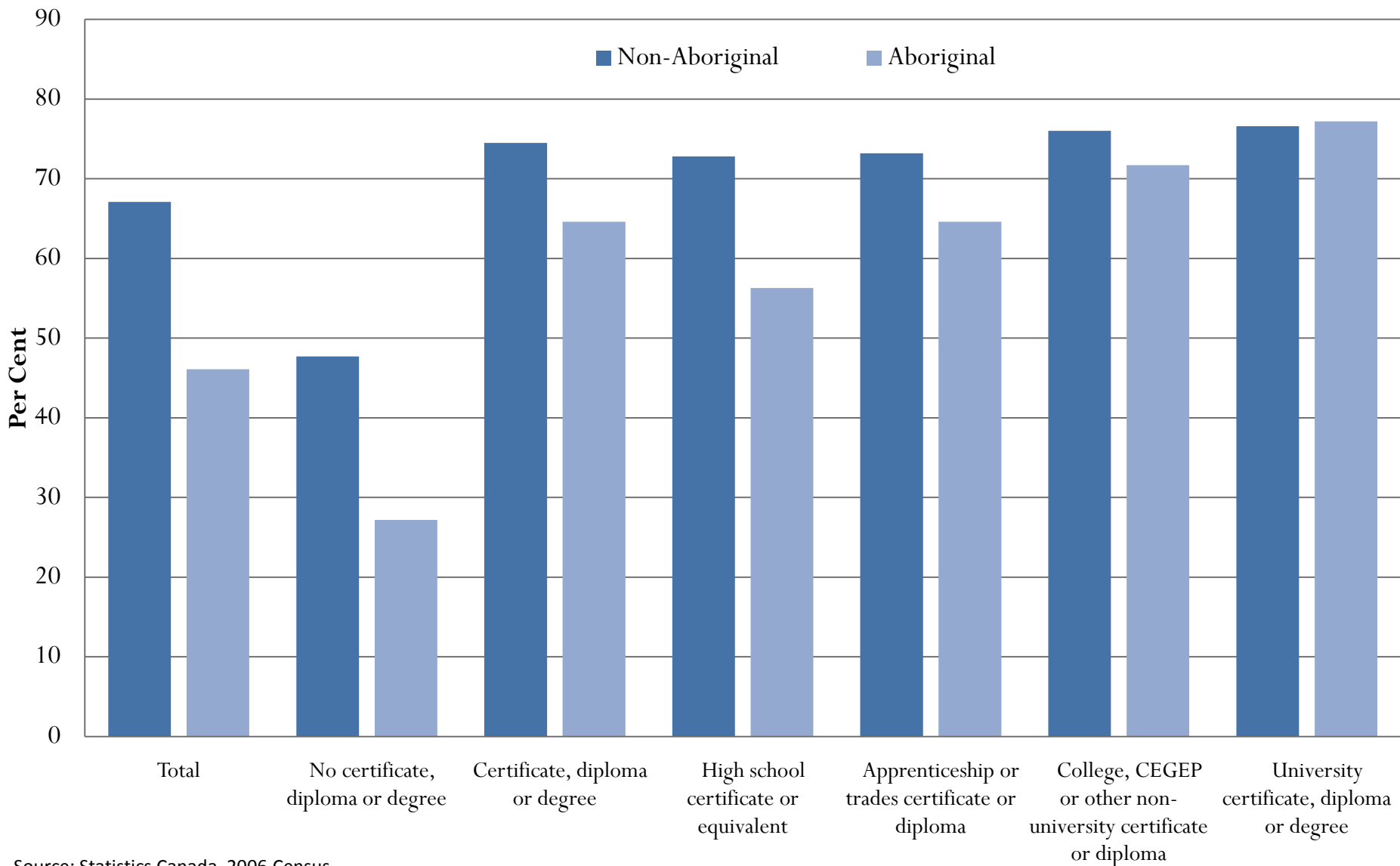
Source: Census 2001

Aboriginal Population Growth in Saskatchewan and Canada by Age, 2001-2017



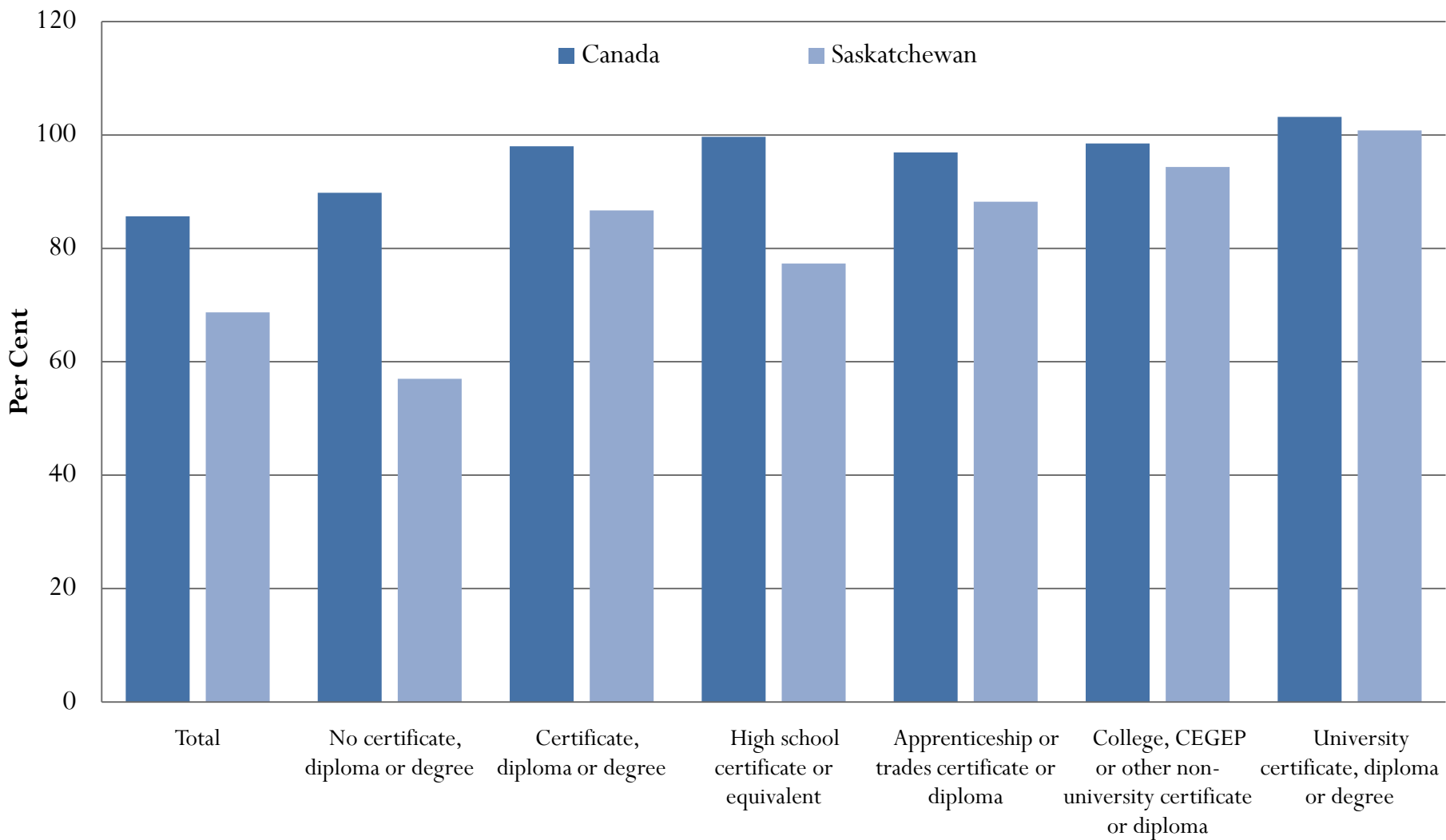
Source: Statistics Canada, Product 91-547-XIE2005001

Employment Rates of Aboriginals and non-Aboriginals by Educational Attainment, Saskatchewan, 2006



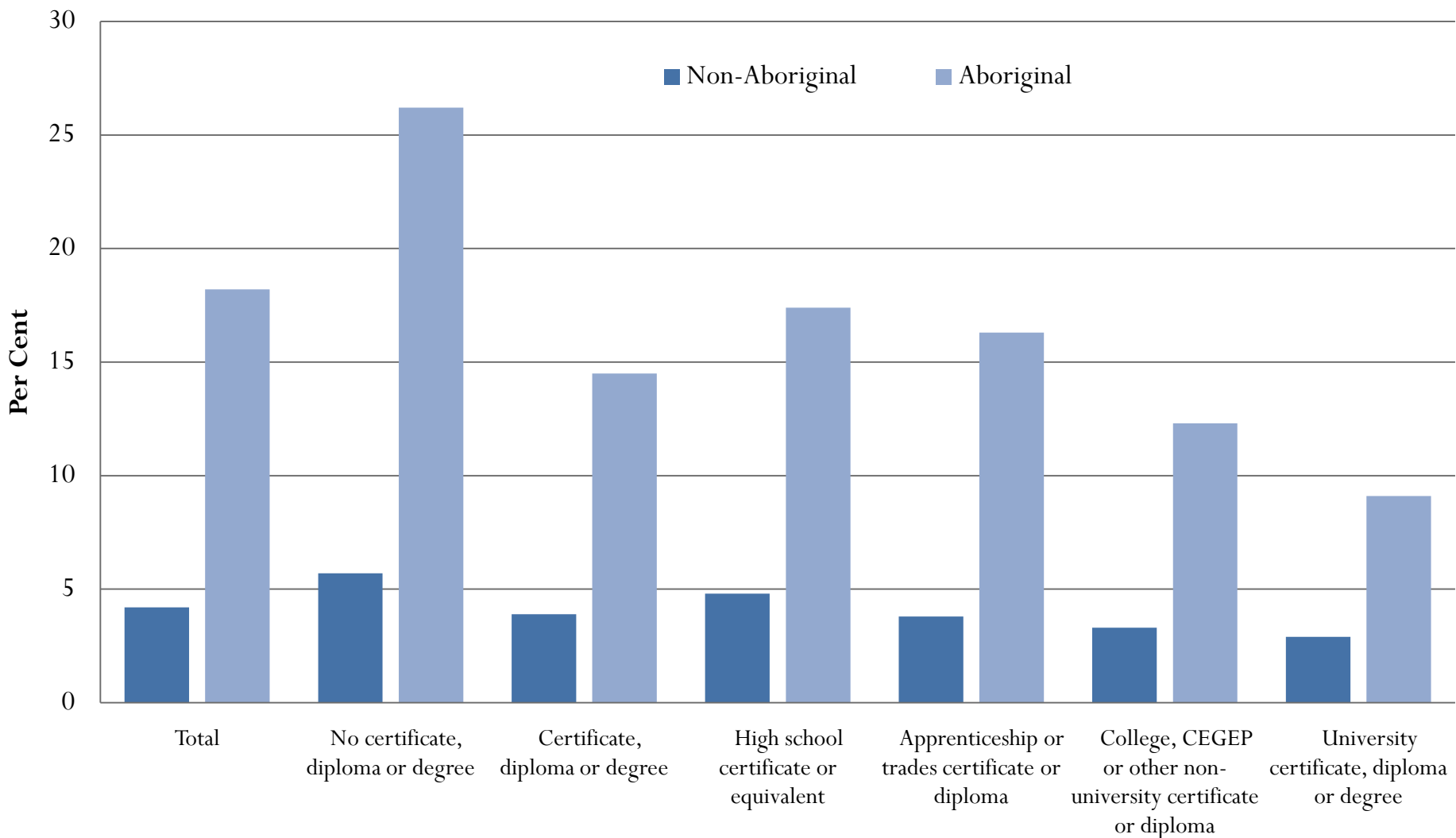
Source: Statistics Canada, 2006 Census.

Employment Rate of Aboriginals as a Proportion of the Rate for non-Aboriginals, Canada and Saskatchewan, 2006



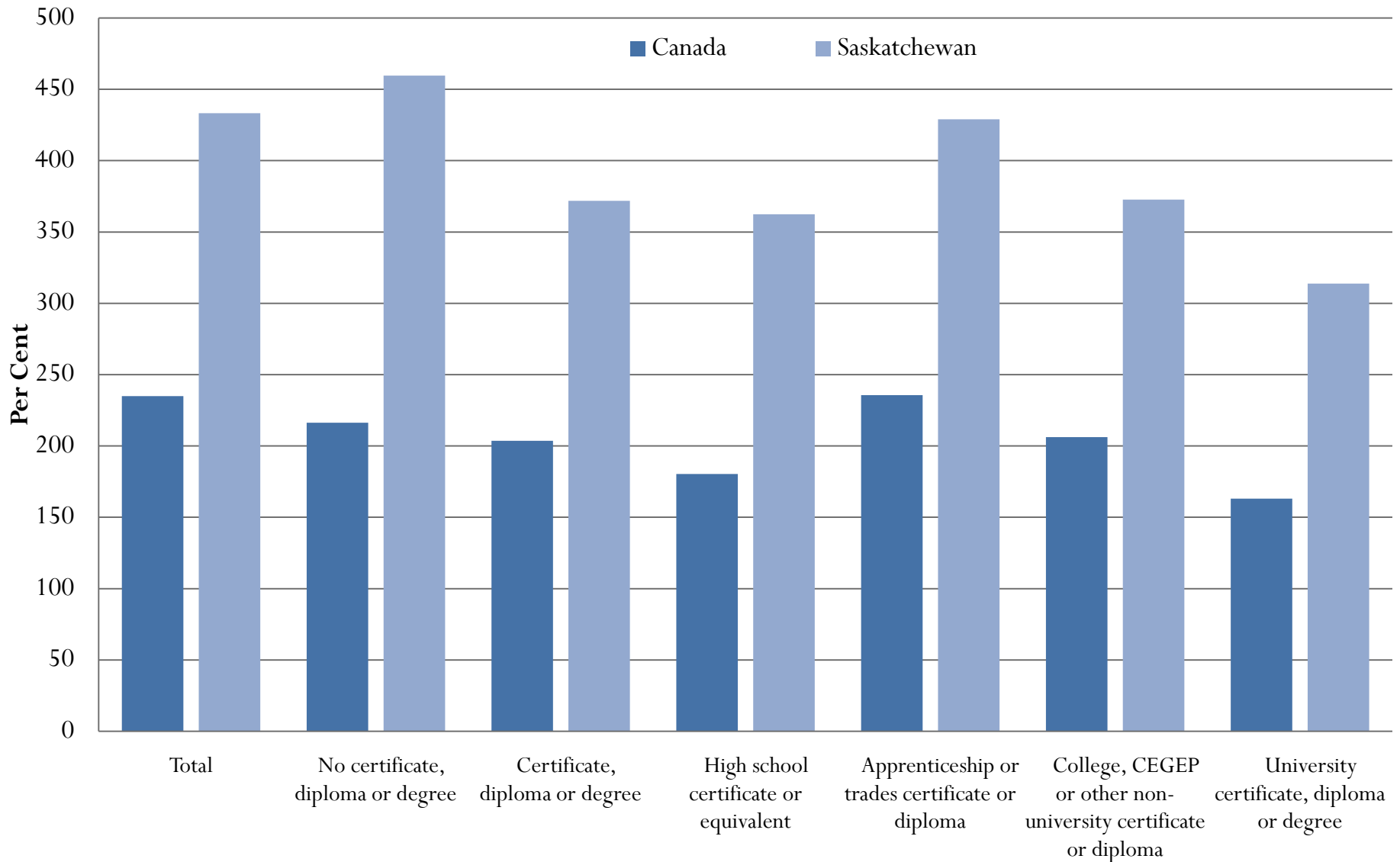
Source: Statistics Canada, 2006 Census.

Unemployment Rates of Aboriginals and non-Aboriginals by Educational Attainment, Saskatchewan, 2006



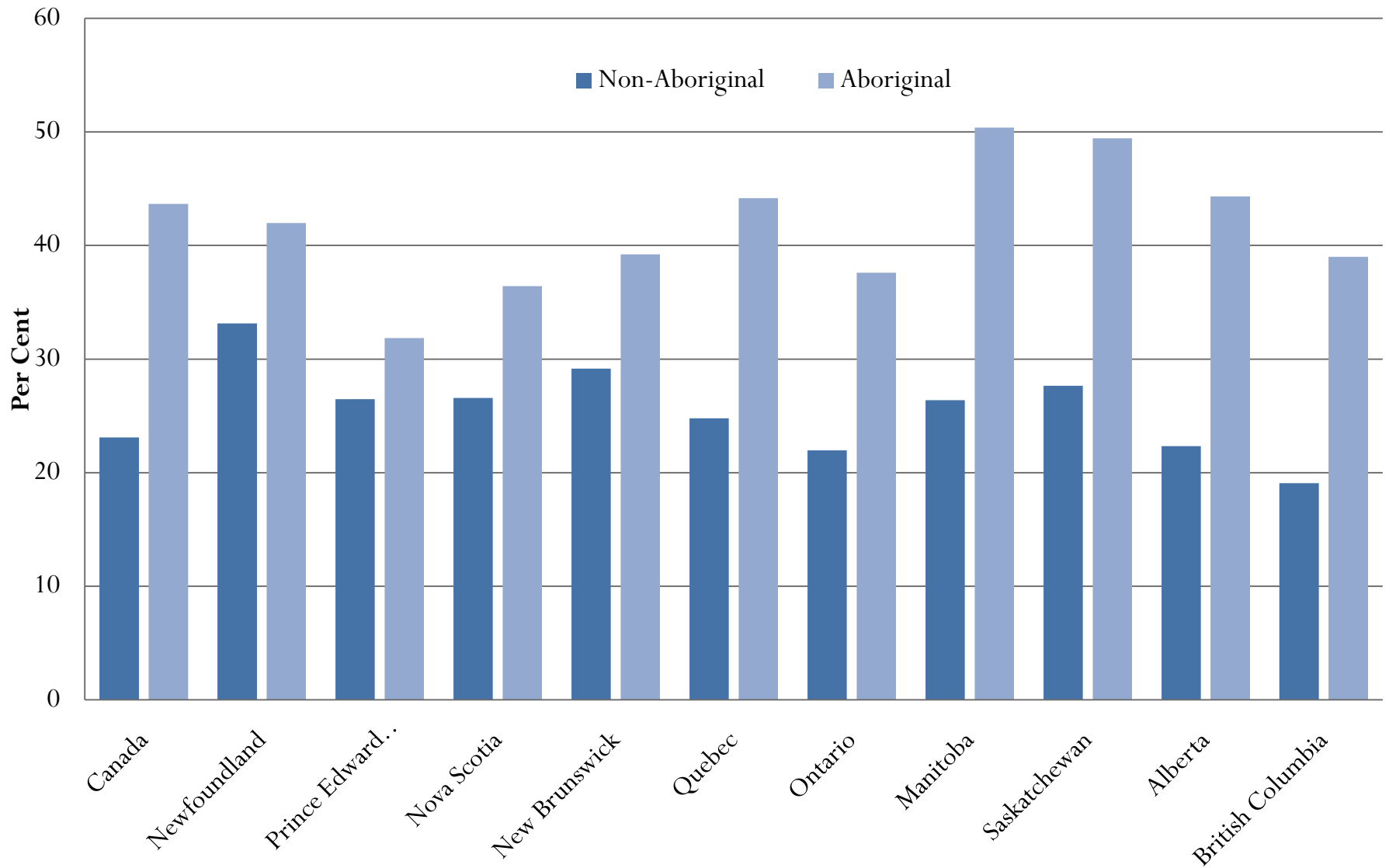
Source: Statistics Canada, 2006 Census.

Unemployment Rate of Aboriginals as a Proportion of the Rate for non-Aboriginals, Canada and Saskatchewan, 2006



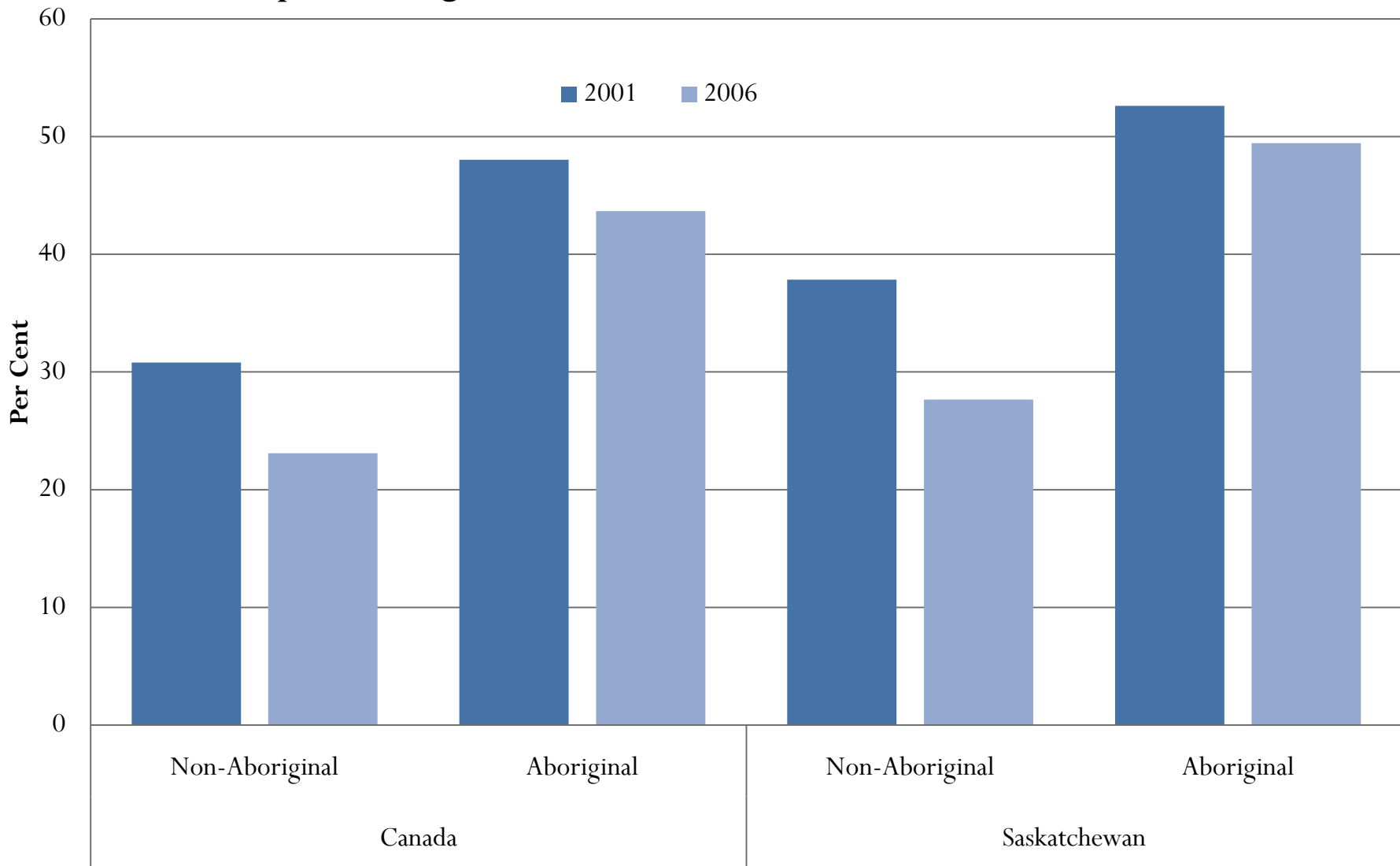
Source: Statistics Canada, 2006 Census.

High School non-Completion Rate for Aboriginal and non-Aboriginal Populations Aged 15+, Canada and Provinces, 2006



Source: Statistics Canada, 2006 Census.

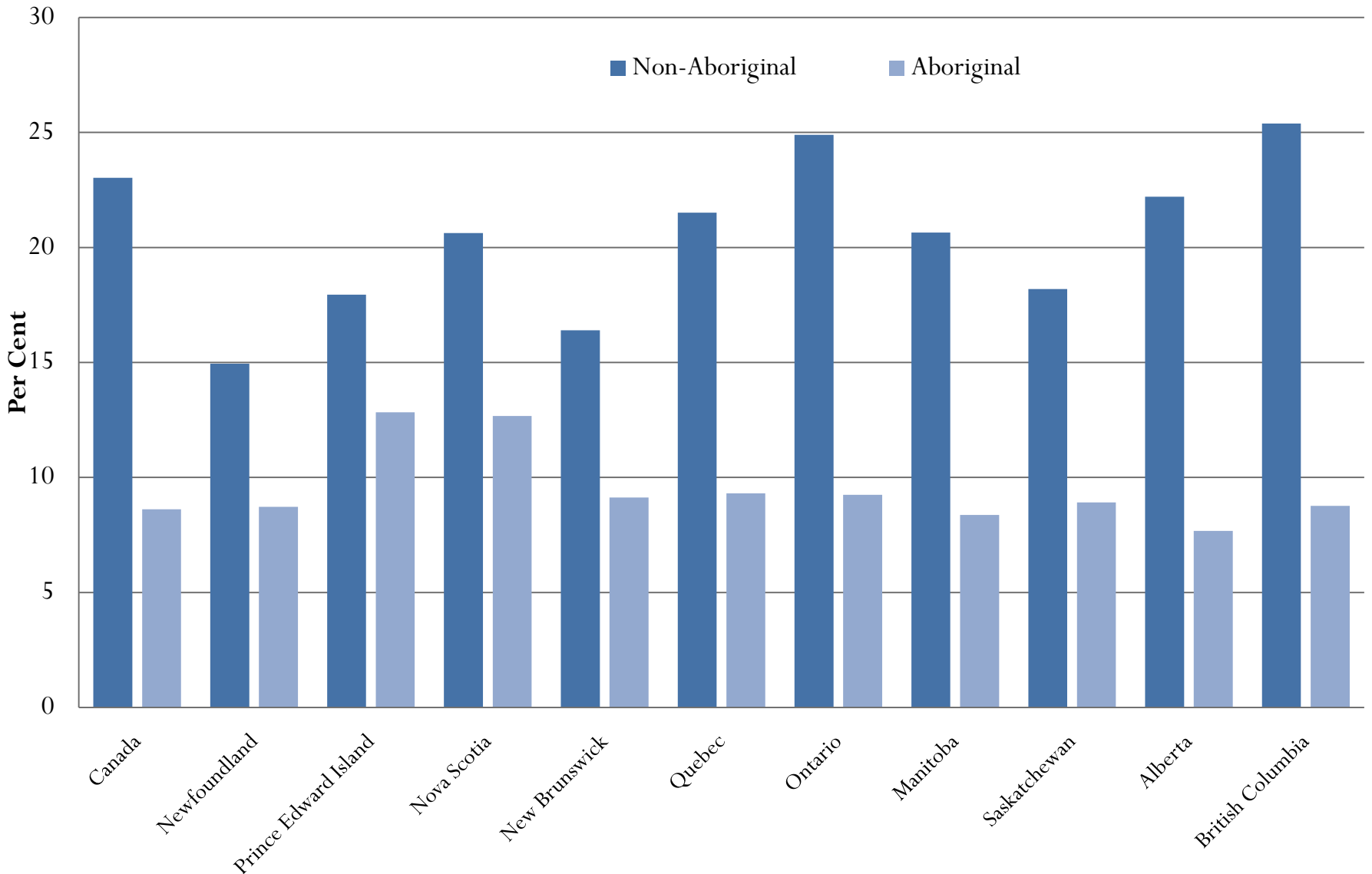
High School non-Completion Rates for Aboriginal and non-Aboriginal Populations aged 15+, Canada and Saskatchewan, 2001 and 2006



Source: Statistics Canada, 2006 Census and 2001 Census.

Note: The Census definitions of educational attainment were changed between the 2001 and 2006 Census so changes should be interpreted with caution. For more details, see <http://www12.statcan.ca/english/census06/reference/infocensus/education.cfm>

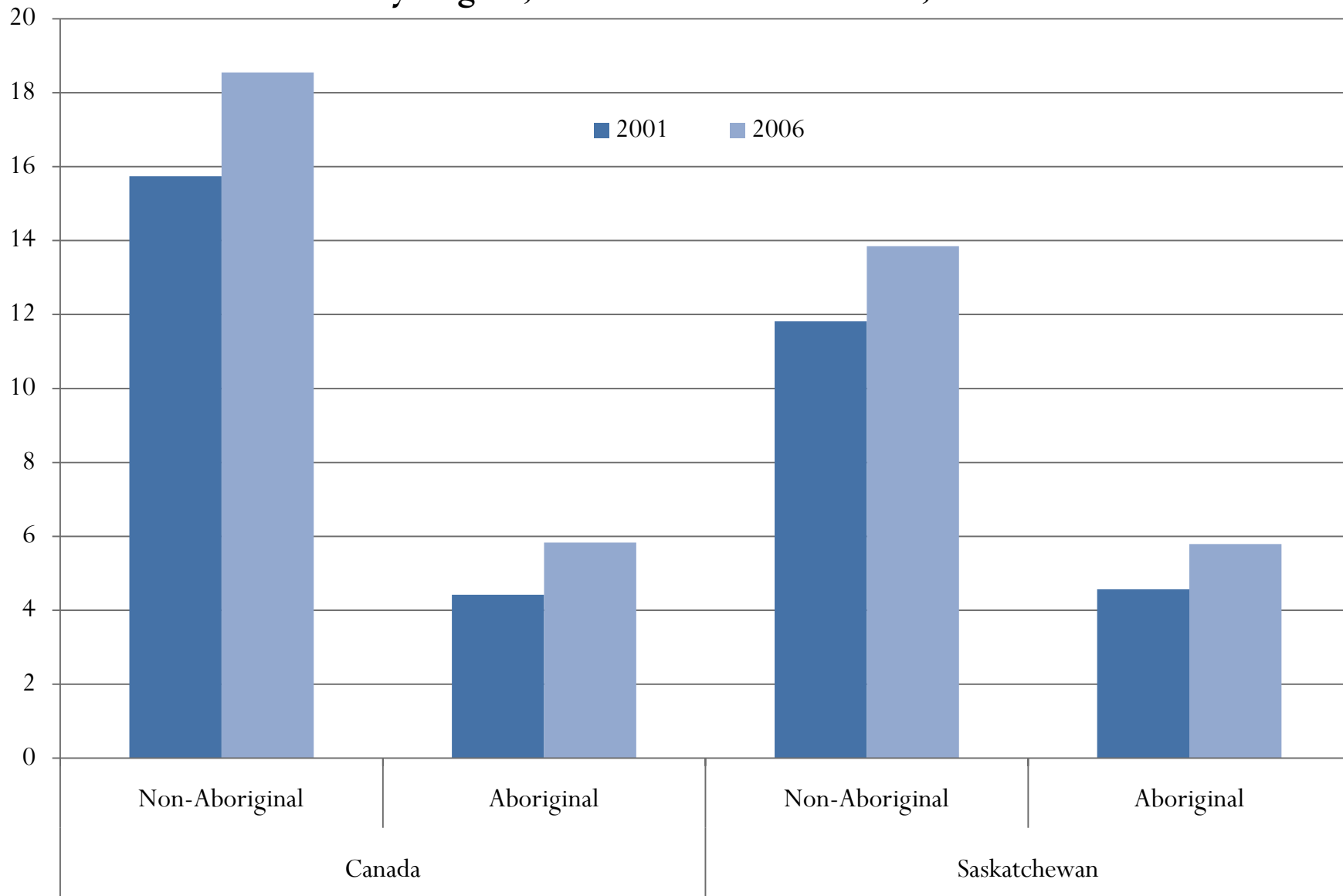
Proportion of the Aboriginal and non-Aboriginal Population Aged 15+ With University Education*, Canada and Provinces, 2006



Source: Statistics Canada, 2006 Census.

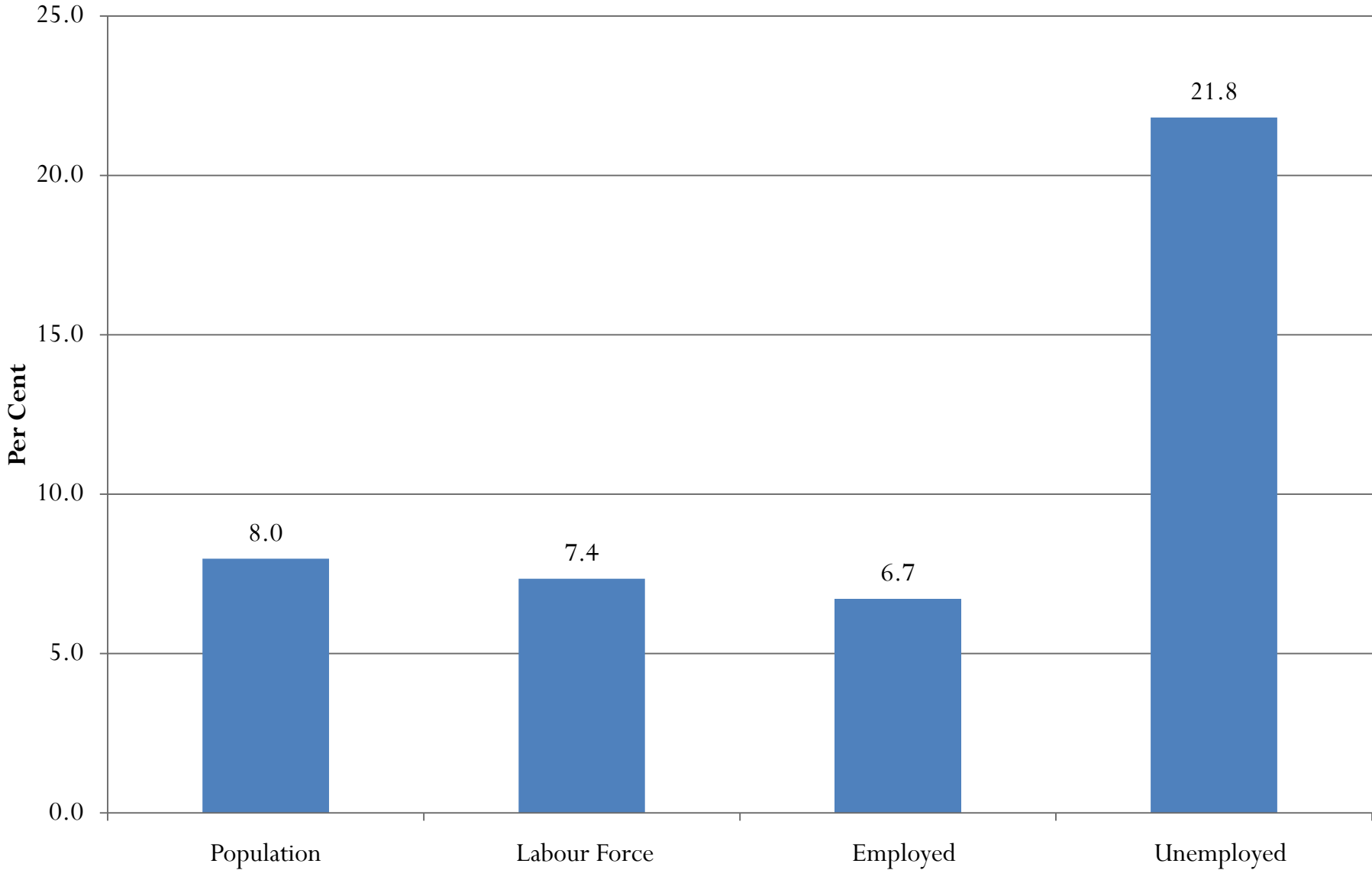
*Includes university certificate or diploma below bachelor level as well as university degrees.

Proportion of Aboriginal and non-Aboriginal Population (15+) With a University Degree, Canada and Saskatchewan, 2001 and 2006



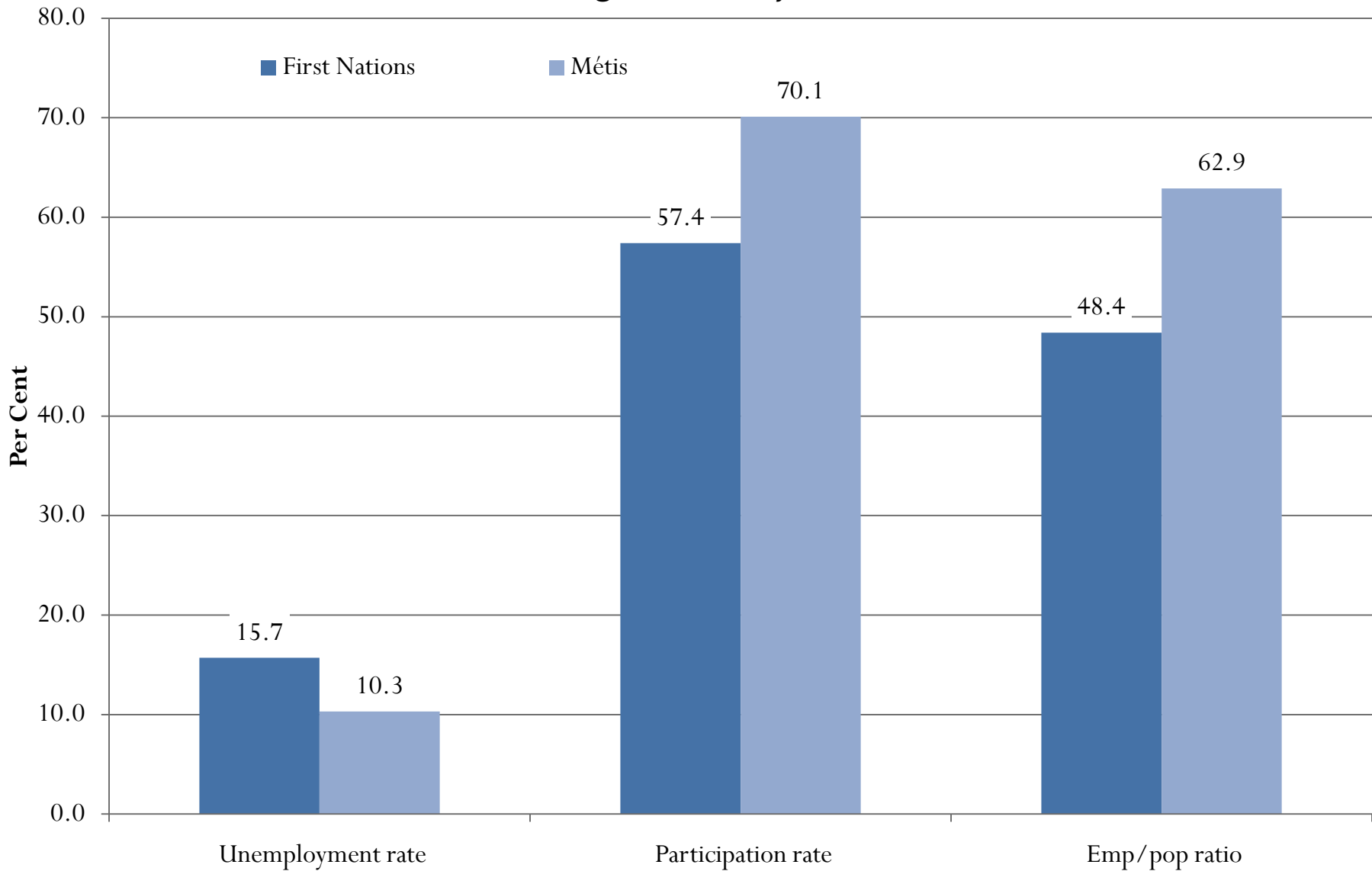
Source: Statistics Canada, 2006 Census.

Off-Reserve Aboriginal Population as a Share of Total Population (15+) in Saskatchewan, by Labour Force Status, 2007



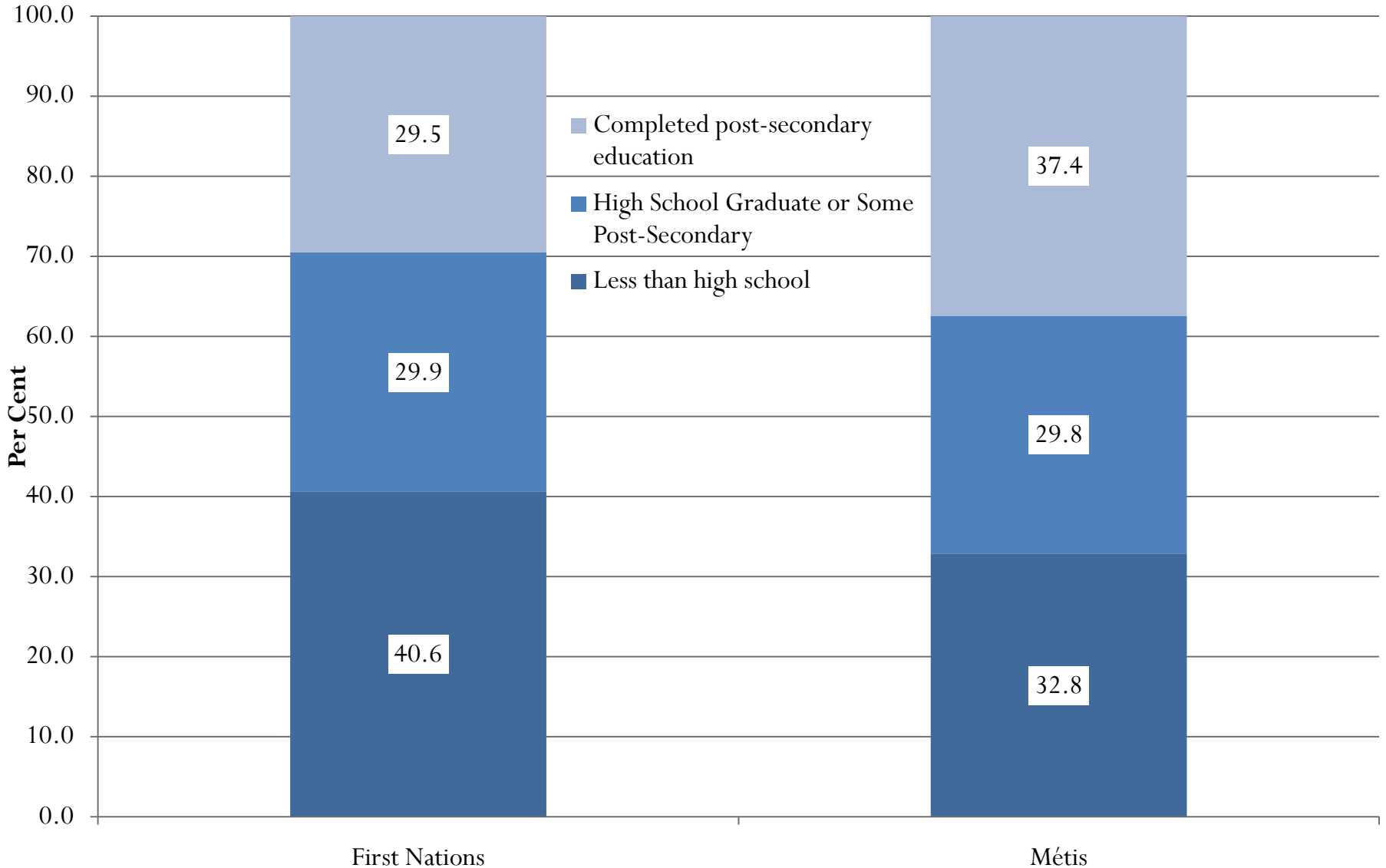
Source: Statistics Canada, unpublished data from the Labour Force Survey (LFS).

Labour Market Outcomes of Off-Reserves Aboriginals in Saskatchewan, by Aboriginal Identity, 2007



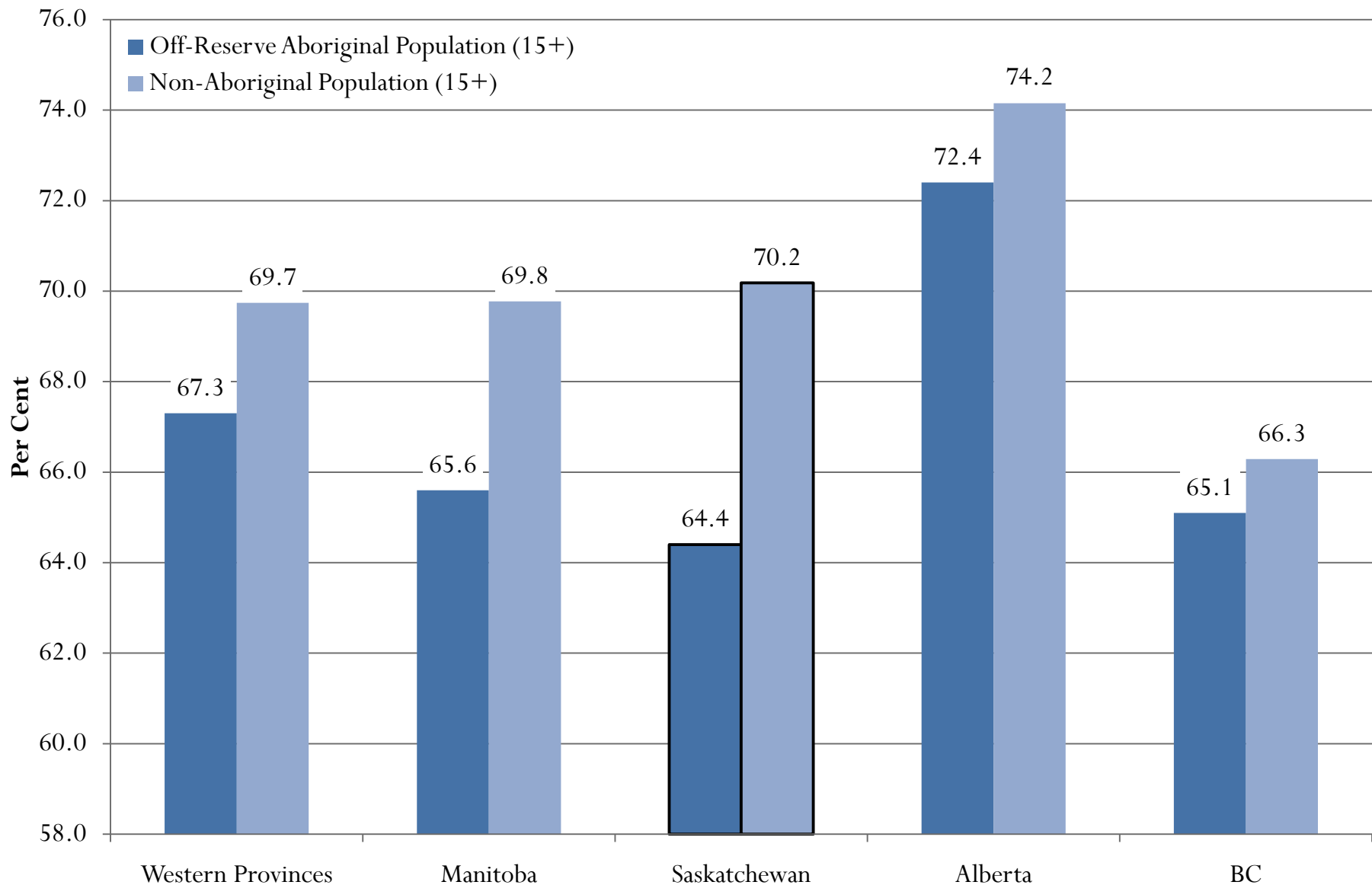
Source: Statistics Canada, unpublished data from the Labour Force Survey (LFS).

Shares of Population (15+) by Highest Level of Educational Attainment in Saskatchewan, Off-Reserve Aboriginal by Aboriginal Identity, 2007



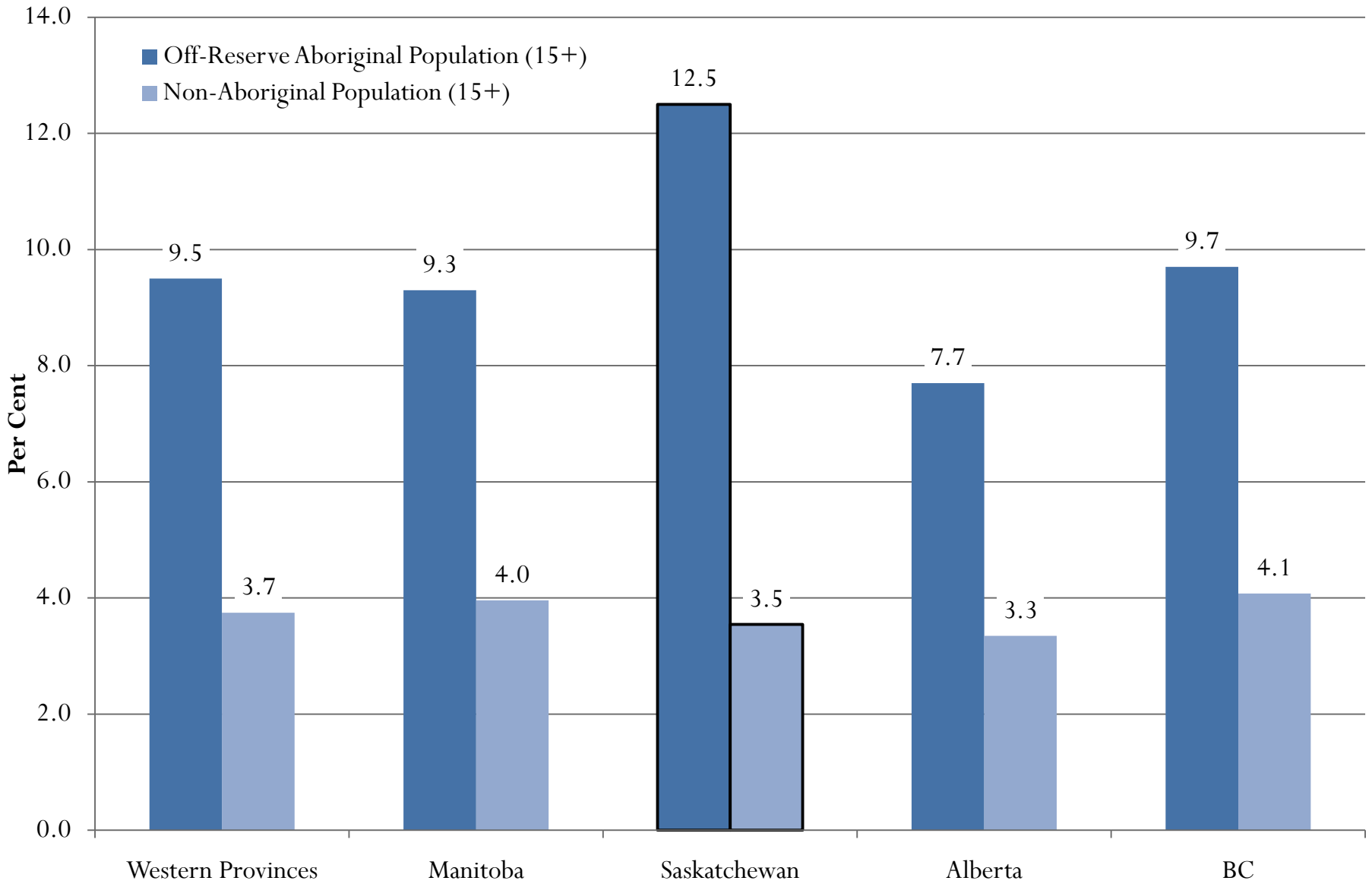
Source: Statistics Canada, unpublished data from the Labour Force Survey (LFS).

Off-Reserve Aboriginal Participation Rate in Western Provinces, 2007



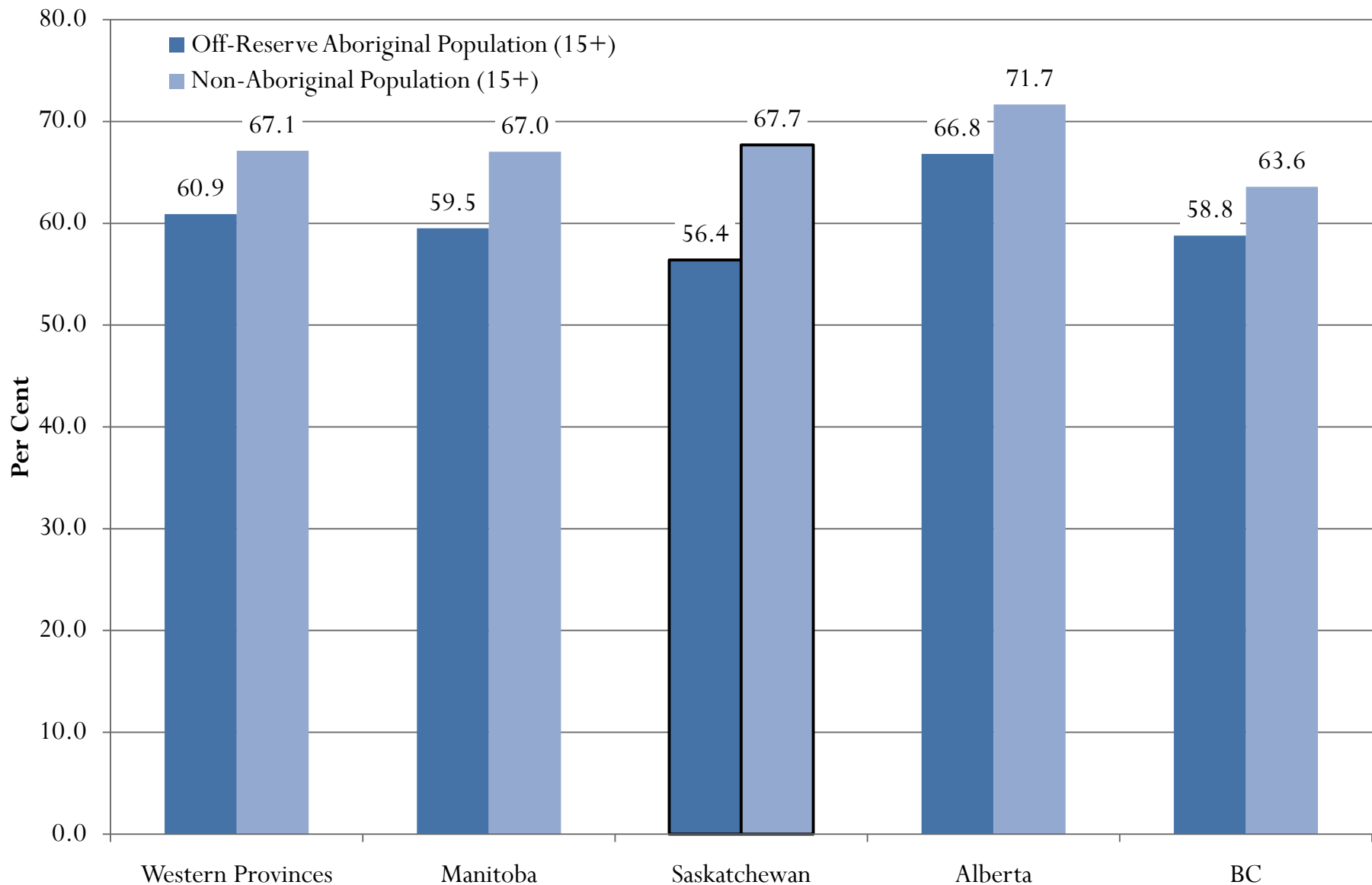
Source: Statistics Canada, unpublished data from the Labour Force Survey (LFS).

Off-Reserve Aboriginal Unemployment Rate in Western Provinces, 2007



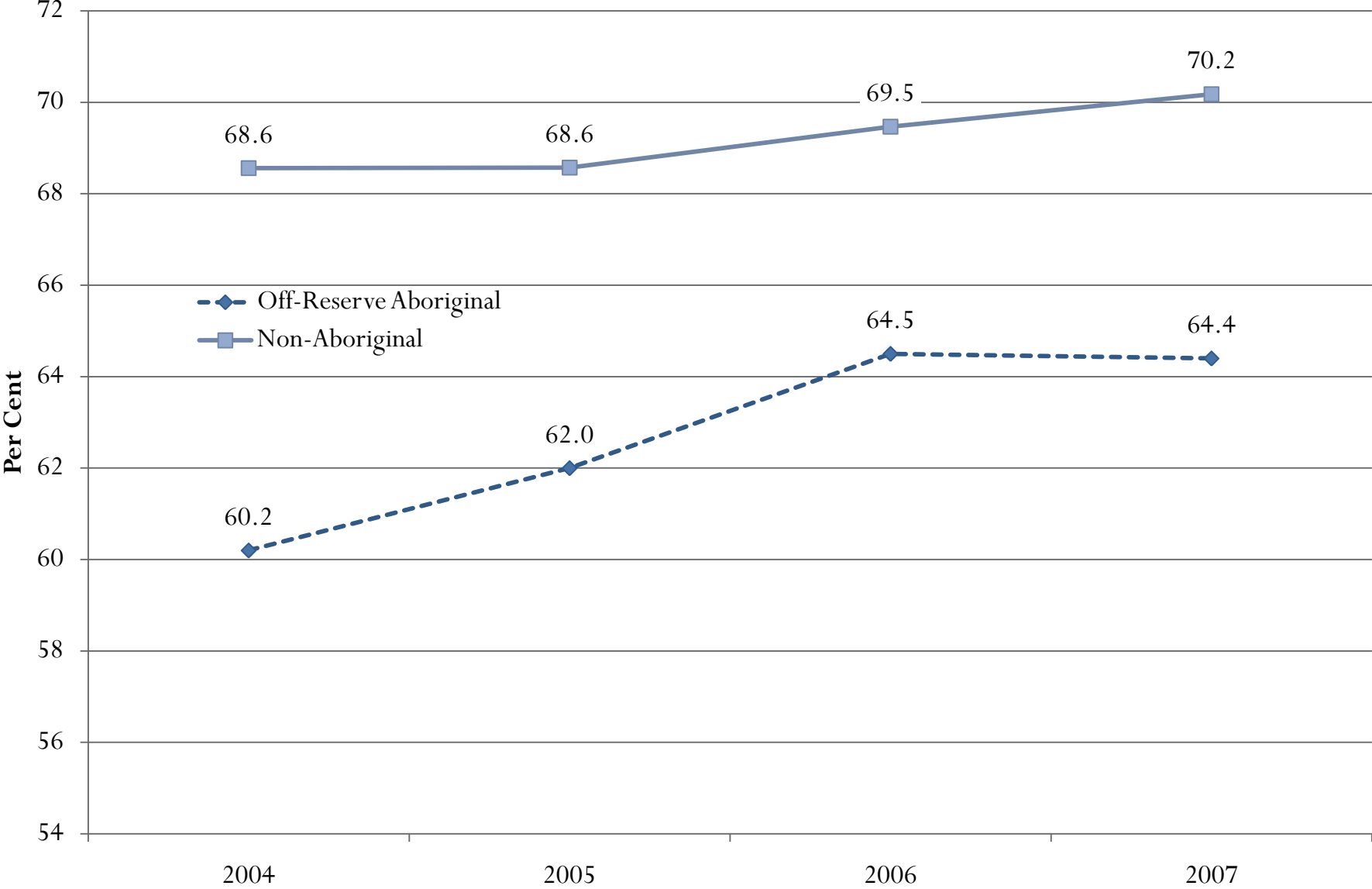
Source: Statistics Canada, unpublished data from the Labour Force Survey (LFS).

Off-Reserve Aboriginal Employment Rate in Western Provinces, 2007



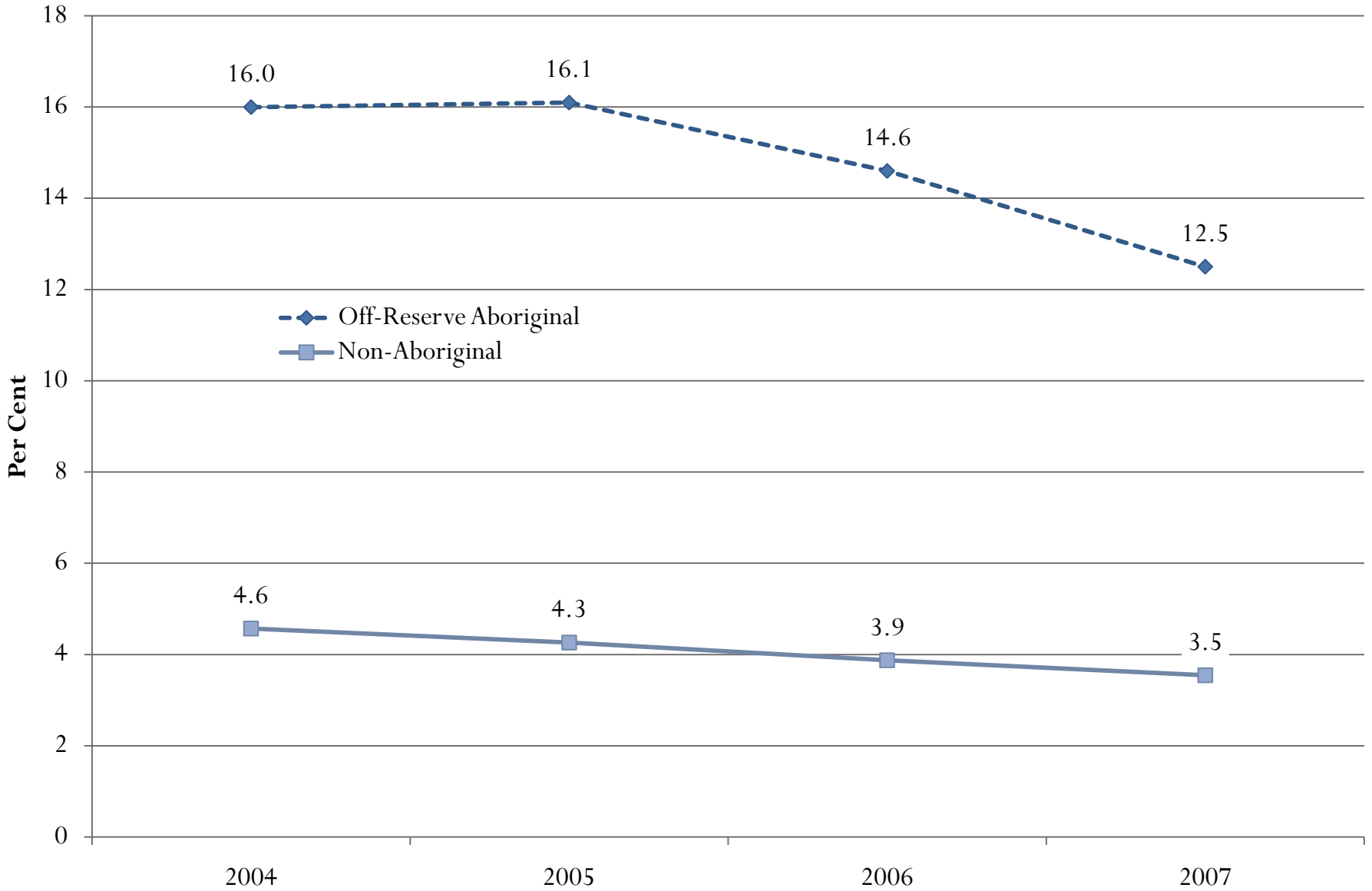
Source: Statistics Canada, unpublished data from the Labour Force Survey (LFS).

Recent Participation Rate Trends in Saskatchewan, Non-Aboriginal Population and Off-Reserve Aboriginal Population (15+), 2004-2007



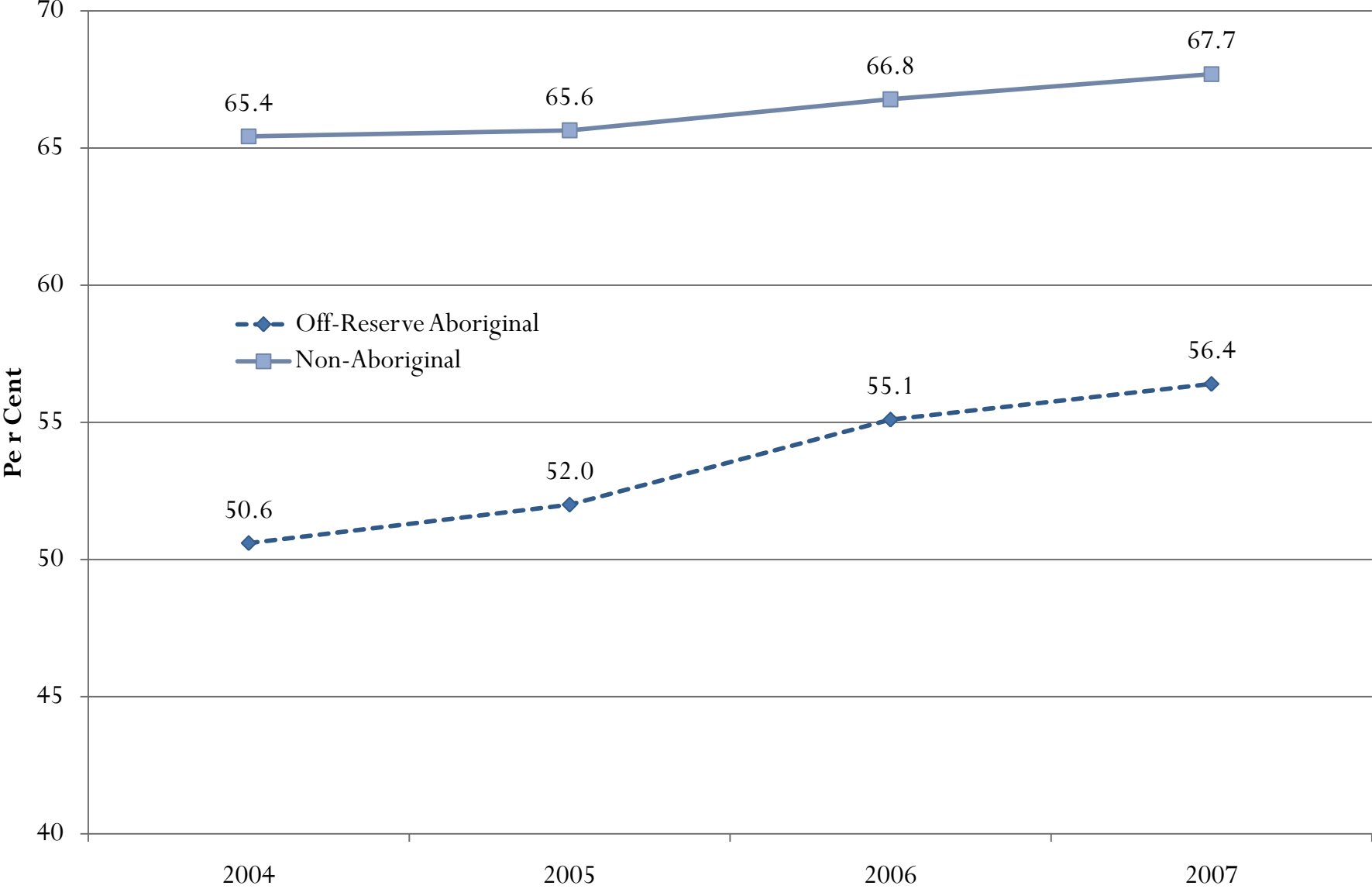
Source: Statistics Canada, unpublished data from the Labour Force Survey (LFS).

Recent Unemployment Rate Trends in Saskatchewan, Non-Aboriginal Population and Off-Reserve Aboriginal Population (15+), 2004-2007



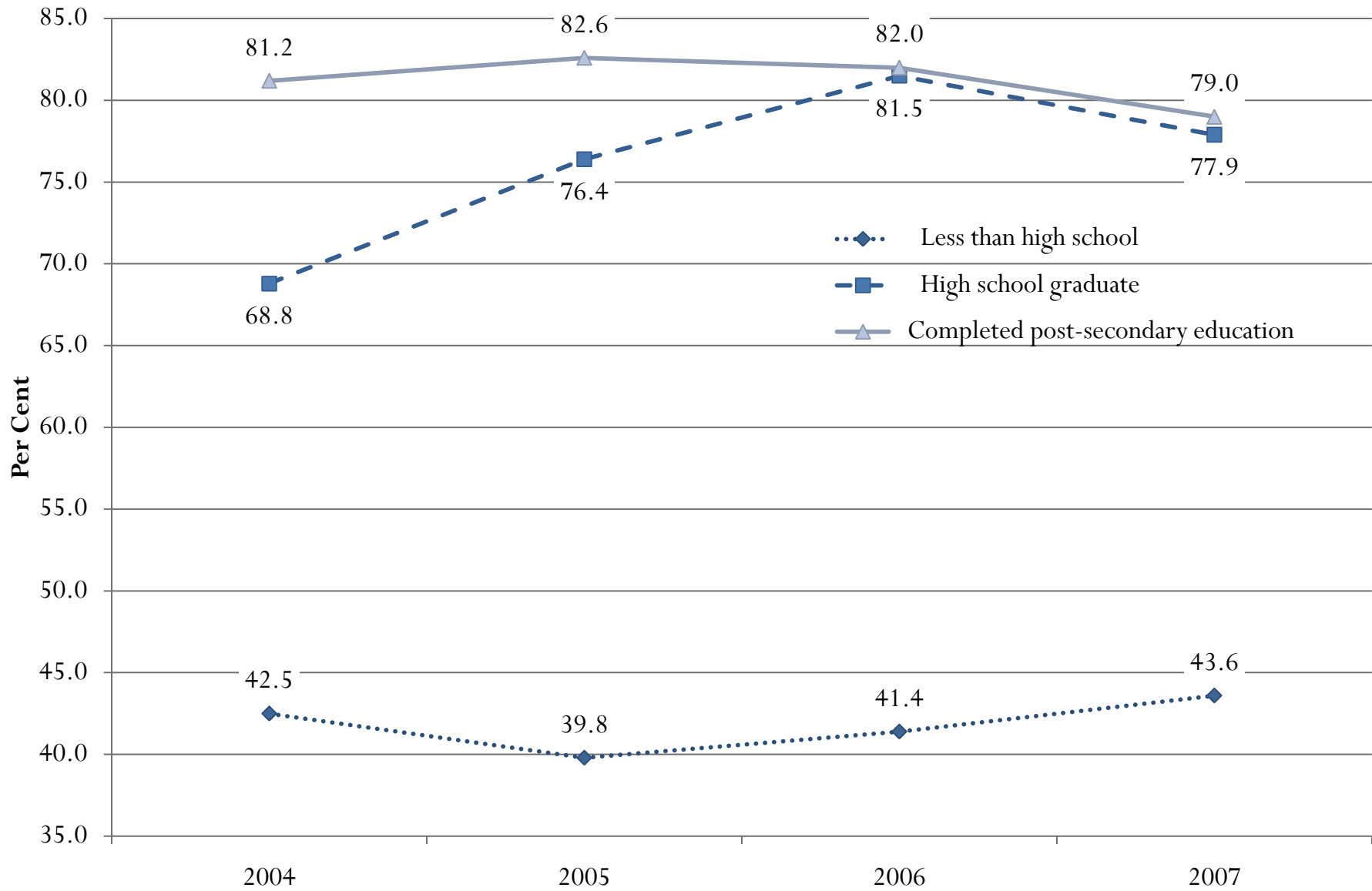
Source: Statistics Canada, unpublished data from the Labour Force Survey (LFS).

Recent Employment Rate Trends in Saskatchewan, Non-Aboriginal Population and Off-Reserve Aboriginal Population (15+), 2004-2007



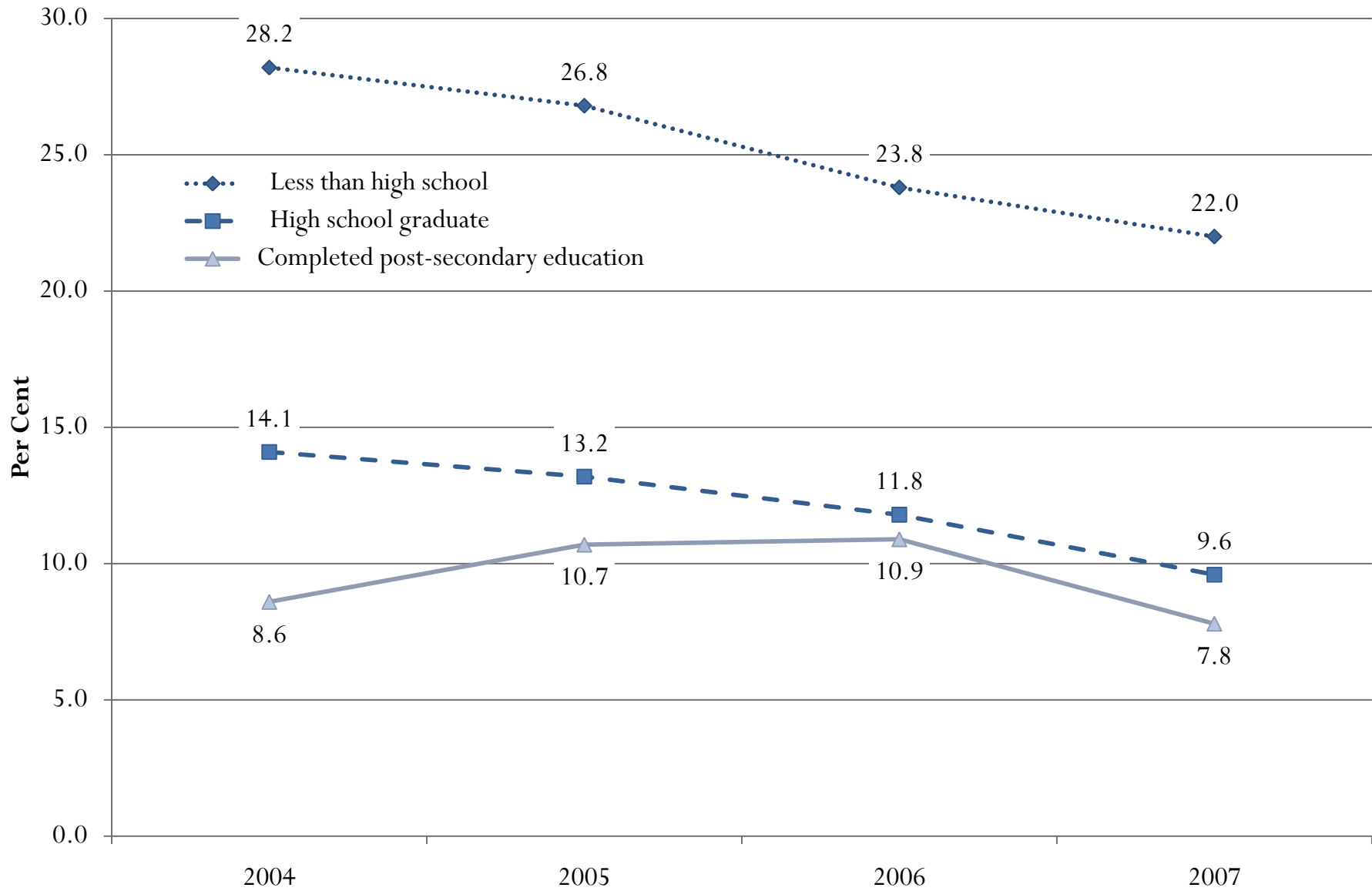
Source: Statistics Canada, unpublished data from the Labour Force Survey (LFS).

Off-Reserve Aboriginal Participation Rate (15+) by Highest Level of Educational Attainment in Saskatchewan, 2004-2007



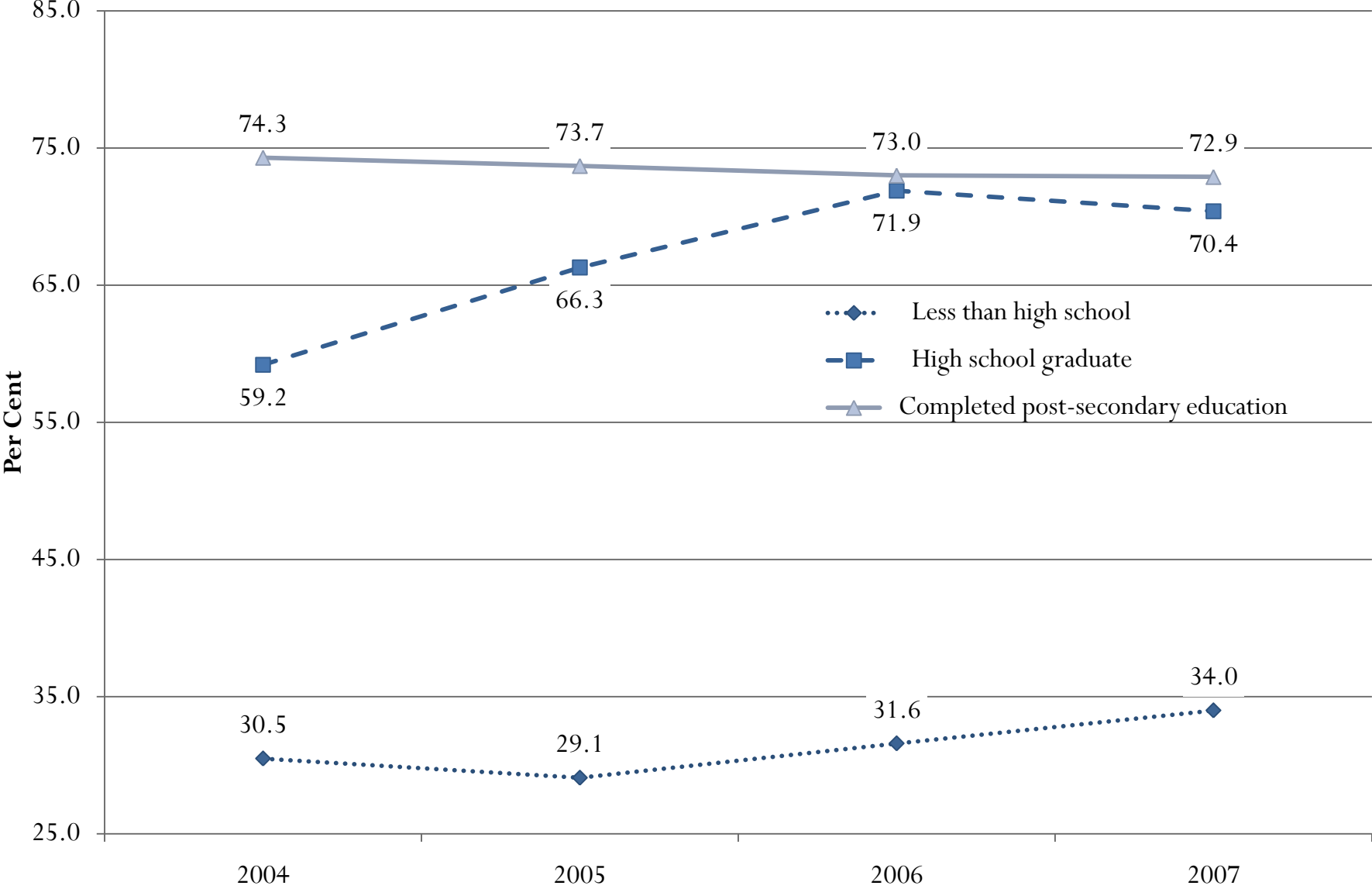
Source: Statistics Canada, unpublished data from the Labour Force Survey (LFS).

Off-Reserve Aboriginal Unemployment Rate (15+) by Highest Level of Educational Attainment in Saskatchewan, 2004-2007



Source: Statistics Canada, unpublished data from the Labour Force Survey (LFS).

Off-Reserve Aboriginal Employment Rate (15+) by Highest Level of Educational Attainment in Saskatchewan, 2004-2007



Source: Statistics Canada, unpublished data from the Labour Force Survey (LFS).

Summary of Aboriginal Labour Force Projections, by Scenario and by Province, 2001-2017

	Percentage Change in Aboriginal Labour Force, 2001-2017		Contribution to Total Labour Force Growth, 2001-2017, per cent		Percentage of Labour Force in 2001	Percentage of Labour Force in 2017	
	Scenario 1	Scenario 3	Scenario 1	Scenario 3	-	Scenario 1	Scenario 3
Atlantic	42.0	43.2	9.5	9.7	2.15	2.79	2.81
Quebec	10.3	15.3	0.7	1.1	1.08	1.03	1.08
Ontario	32.1	51.0	1.5	2.4	1.44	1.46	1.67
Manitoba	47.6	71.0	28.6	42.8	10.13	12.80	14.84
Saskatchewan	60.5	104.5	128.3	221.5	8.76	13.50	17.20
Alberta	54.9	77.5	7.6	10.7	4.12	4.91	5.63
British Columbia	27.4	32.2	3.6	4.2	3.82	3.76	3.91
Territories	49.7	78.8	100.4	159.2	40.88	50.89	60.78
Canada	41.7	53.6	5.8	7.4	2.73	3.23	3.50

Summary of Aboriginal Employment Projections, by Scenario and by Province, 2001-2017

	Percentage Change in Aboriginal Employment, 2001-2017		Contribution to the Employment Growth, per cent		Percentage of Employment in 2001	Percentage of Employment in 2017	
	Scenario 1	Scenario 3	Scenario 1	Scenario 3	-	Scenario 1	Scenario 3
Atlantic	42.0	72.4	7.9	13.6	1.8	2.3	2.8
Quebec	10.3	30.9	0.6	1.9	1.0	0.9	1.1
Ontario	32.1	55.3	1.5	2.5	1.4	1.4	1.7
Manitoba	47.6	101.7	24.7	52.7	8.7	11.0	15.1
Saskatchewan	60.5	152.7	105.6	266.4	7.2	11.1	17.5
Alberta	54.9	98.7	6.8	12.2	3.7	4.4	5.7
British Columbia	27.4	57.0	3.0	6.3	3.2	3.2	3.9
Territories	49.7	110.1	91.0	201.6	37.0	46.1	64.7
Canada	41.7	76.4	4.17	7.64	2.4	2.7	3.4

Thank You

Email: andrew.sharpe@csls.ca

Website: www.csls.ca